

## VAIA Three-hole basin mixer with pop-up waste - Platinum

VAIA

20 705 819 Product version from 4/1/2025



- 165mm projection
- pivotable spout 360°
- circular, air-enriched flow
- height of mixer 144 mm
- height up to aerator 90 mm
- hole diameter valve 32 mm
- hole diameter spout 35 mm
- rosette Ø 60 mm
- max. flow 5.7 l/min
- lead-free
- This product can help a building meet the requirements of Green Building Rating Systems, e.g. LEED®, BREEAM®, DGNB
- WRAS

Only suitable for basins with an overflow.

|  |                                |               |
|--|--------------------------------|---------------|
|   | Platinum                       | 20 705 819-08 |
|   | Chrome                         | 20 705 819-00 |
|   | Brushed Platinum               | 20 705 819-06 |
|   | Dark Chrome                    | 20 705 819-19 |
|   | Brushed Durabronze (23kt Gold) | 20 705 819-28 |
|   | Brushed Dark Brass             | 20 705 819-39 |
|   | Brushed Bronze                 | 20 705 819-42 |
|   | Brushed Champagne (22kt Gold)  | 20 705 819-46 |
|   | Champagne (22kt Gold)          | 20 705 819-47 |
|  | Brushed Dark Platinum          | 20 705 819-99 |

### Recommended miscellaneous



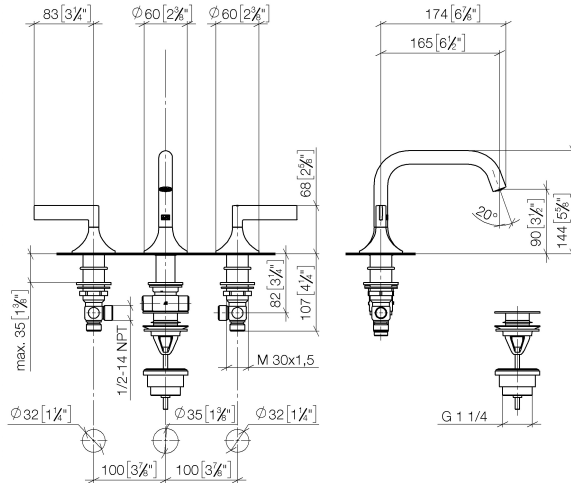
#### High pressure hoses -

- 2x 3/8" x 1/2" x 500mm high pressure hose

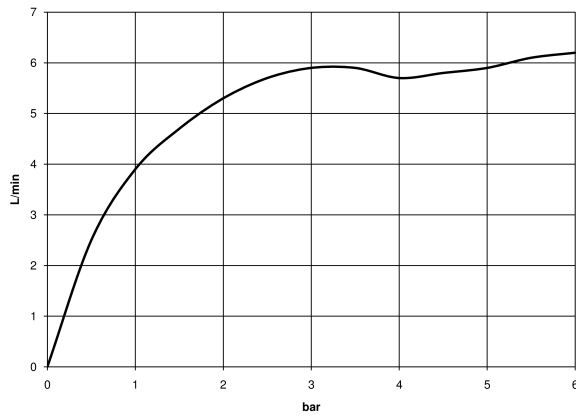
12 506 970 90

20 705 819 Product version from 4/1/2025

mm [inches]



### Flow rate chart



### Codes & Standards

DIN 4109

Executive Order  
no. 1007

ISO 3822

Scottish Water  
Byelaws

UK Water Supply  
Regulations

Ü-Zeichen



## VAIA Three-hole basin mixer with pop-up waste - Platinum

---

VAIA

20 705 819 Product version from 4/1/2025

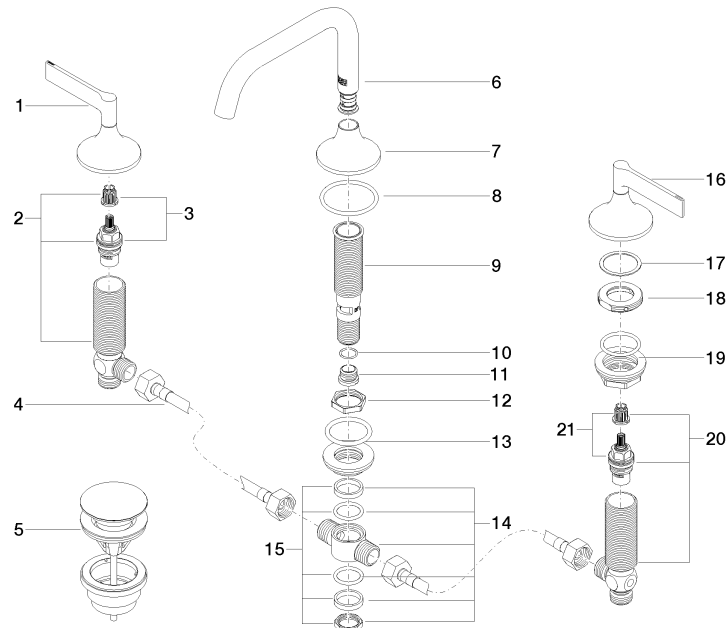
### Certificates and sustainability

---

GDV\_0400

LGA\_38

WRAS\_2312



## Spare parts list

| No. | Item Number        | Name  | Quantity used | Delivery time |
|-----|--------------------|---|---------------|---------------|
| 1   | 90 20 80 013 00-08 | handle ( hot )                                    | 1.00          | 40            |
| 8   | 09 14 10 084 90    | seal  | 1.00          | 2             |
| 12  | 09 23 10 127 90    | nut   | 1.00          | 2             |
| 18  | 09 24 01 028 90    | ring  | 2.00          | 2             |
| 15  | 90 23 10 012 00 90 | gasket kit  | 1.00          | 2             |
| 21  | 90 90 03 150 00 90 | top   | 1.00          | 2             |
| 9   | 90 30 01 033 00 90 | base  | 1.00          | 2             |
| 19  | 04 23 10 032 78 90 | fixing set  | 2.00          | 2             |
| 7   | 09 27 80 011-08    | rosette   | 1.00          | 40            |
| 4   | 04 30 04 096 00 90 | hose  | 2.00          | 2             |
| 2   | 04 17 11 055 51 90 | side panel  | 1.00          | 2             |
| 11  | 09 24 04 021 10 90 | nipple  | 1.00          | 2             |
| 3   | 90 90 03 151 00 90 | top   | 1.00          | 2             |
| 20  | 04 17 11 055 50 90 | side panel  | 1.00          | 2             |
| 17  | 09 28 10 003 90    | ring  | 2.00          | 2             |
| 10  | 09 14 10 017 90    | seal  | 1.00          | 2             |
| 16  | 90 20 80 012 00-08 | handle ( cold )                                   | 1.00          | 40            |
| 6   | 90 28 22 368 00-08 | spout   | 1.00          | 40            |
| 13  | 04 23 10 004 04 90 | fixing set  | 1.00          | 2             |
| 5   | 10 125 970-08      | Basin Waste with push fastening 1 1/4" - Platinum | 1.00          | 40            |
| 14  | 90 17 11 020 10 90 | distributor                                       | 1.00          | 2             |