

VAIA Single-hole basin mixer with stand pipe without pop-up waste - Brushed Champagne (22kt Gold)

VAIA

22 585 809



- 202mm projection
- pivotable spout 360°
- circular, air-enriched flow
- total height 1251 - 1321 mm
- height up to aerator 1152 – 1222 mm
- rosette Ø 135 mm
- max. flow 5.7 l/min
- lead-free
- This product can help a building meet the requirements of Green Building Rating Systems, e.g. LEED®, BREEAM®, DGNB
- WRAS

	Brushed Champagne (22kt Gold)	22 585 809-46
	Chrome	22 585 809-00
	Brushed Platinum	22 585 809-06
	Platinum	22 585 809-08
	Dark Chrome	22 585 809-19
	Brushed Durabronze (23kt Gold)	22 585 809-28
	Brushed Bronze	22 585 809-42
	Champagne (22kt Gold)	22 585 809-47
	Brushed Dark Platinum	22 585 809-99

Required miscellaneous



- Concealed floor mounting -**
- max. recess depth 150 mm
 - min. recess depth 80 mm

35 945 970 90

VAIA Single-hole basin mixer with stand pipe without pop-up waste - Brushed Champagne (22kt Gold)

VAIA

22 585 809
mm [inches]



Flow rate chart



Codes & Standards

DIN 4109

ISO 3822

Scottish Water
Byelaws

UK Water Supply
Regulations

Ü-Zeichen



VAIA Single-hole basin mixer with stand pipe without pop-up waste - Brushed Champagne (22kt Gold)

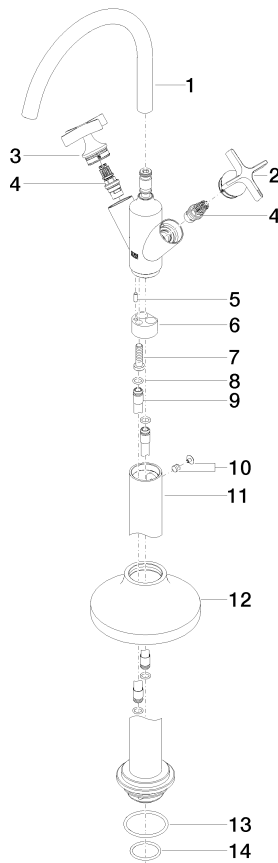
VAIA

22 585 809

Certificates and sustainability

LGA_38

WRAS_240102



Spare parts list

No.	Item Number	Name	Quantity used	Delivery time
	13 09 14 10 084 90	seal	1.00	2
	4 90 90 03 175 00 90	top	2.00	2
	8 09 14 10 139 90	seal	4.00	2
	1 90 28 22 313 00-46	spout	1.00	30
	7 09 30 30 047 90	screw	1.00	2
	10 04 31 11 002 00 90	pin	1.00	2
	5 09 31 11 040 90	pin	1.00	2
	11 04 28 22 028 00-46	pipe	1.00	60
	12 90 27 80 033 00-46	rosette	1.00	30
	2 90 20 66 028 00-46	handle (cold)	1.00	30
	3 90 20 66 029 01-46	handle (hot)	1.00	30
	9 04 28 22 022 10 90	connection	2.00	2
	6 09 24 03 193 90	adaptor	1.00	2
	14 09 14 10 018 90	seal	1.00	2