

TARA Single-hole mixer - Brushed Champagne (22kt Gold)

TARA

22 815 892 Product version from 5/27/2021



- 235mm projection
- pivotable spout 360°
- air-enriched flow
- height of mixer 378 mm
- height up to aerator 220 mm
- hole diameter 35 mm
- max. flow 7 l/min at 3 bar flow pressure
- lead-free
- This product can help a building meet the requirements of Green Building Rating Systems, e.g. LEED®, BREEAM®, DGNB
- WRAS

	Brushed Champagne (22kt Gold)	22 815 892-46
	Chrome	22 815 892-00
	Brushed Platinum	22 815 892-06
	Platinum	22 815 892-08
	Durabrass (23kt Gold)	22 815 892-09
	Dark Chrome	22 815 892-19
	Brushed Durabrass (23kt Gold)	22 815 892-28
	Matte Black	22 815 892-33
	Brushed Bronze	22 815 892-42
	Champagne (22kt Gold)	22 815 892-47
	Brushed Chrome	22 815 892-93
	Brushed Dark Platinum	22 815 892-99

Recommended miscellaneous

Dispenser with rosette - Brushed Champagne (22kt Gold) 82 444 970-46



Recommended miscellaneous

Strainer waste with control handle - Brushed Champagne (22kt Gold) 10 710 970-46

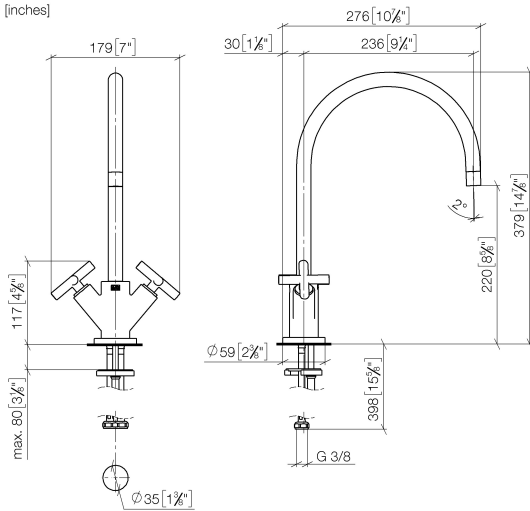


TARA Single-hole mixer - Brushed Champagne (22kt Gold)

TARA

22 815 892 Product version from 5/27/2021

mm [inches]



Flow rate chart



Codes & Standards

DIN 4109	EN 200	Executive Order no. 1007	ISO 3822
Scottish Water Byelaws	UK Water Supply Regulations	Ü-Zeichen	VA-Zeichen



TARA Single-hole mixer - Brushed Champagne (22kt Gold)

TARA

22 815 892 Product version from 5/27/2021

Certificates and sustainability

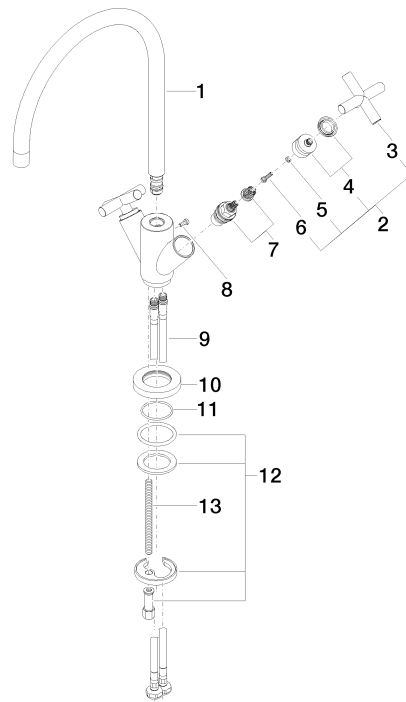
ETA_18	LGA_19	GDV_0400	WRAS_240702
--------	--------	----------	-------------

TARA Single-hole mixer - Brushed Champagne (22kt Gold)

TARA

22 815 892 Product version from 5/27/2021

Parts for other
finishes can be found
here: [Chrome](#)



Spare parts list

No.	Item Number	Name	Quantity used	Delivery time
	11 09 14 10 134 90	seal	1.00	2
	1 90 28 22 226 01-46	spout	1.00	30
	10 09 28 10 132-46	ring	1.00	30
	7 90 90 03 151 00 90	top	2.00	2
	3 09 20 89 010-46	handle	2.00	30
	9 04 30 04 104 00 90	hose	2.00	2
	13 09 31 11 012 90	pin	1.00	2
	8 09 30 30 054 90	screw	1.00	2
	12 04 30 11 038 00 90	fixing set	1.00	2
	4 90 12 12 007 00-46	base	2.00	30
	2 90 20 89 010 10-46	handle	2.00	30
	5 90 30 11 029 00 90	disc	2.00	2
	6 90 30 30 075 00 90	screw	2.00	2