

MADISON Bath mixer for wall mounting with hand shower set - Brushed Platinum


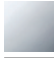
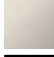


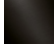
MADISON

25 023 360



- 160mm projection
- Hand shower: COMPACT RAIN, max. flow rate 6.8 l/min (at 3 bar)
- spout: rectangular normal flow
- wall bracket
- rotary diverter for bath/shower
- rosette Ø 70 mm
- 1/2" connection
- gauge 153 mm
- metal shower hose 1250mm with integrated anti-twist protection
- max. spout flow rate 26 l/min

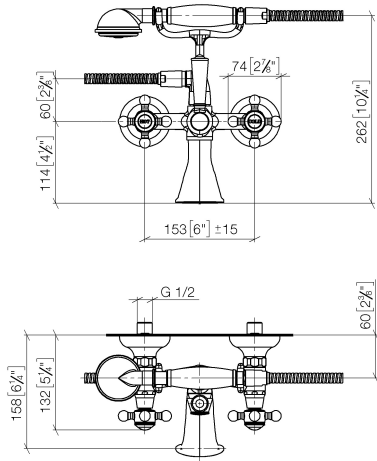
Intrinsic protection against back flow.

	Brushed Platinum	25 023 360-06 0050
	Chrome	25 023 360-00 0050
	Platinum	25 023 360-08 0050
	Durabress (23kt Gold)	25 023 360-09 0050
	Brushed Durabress (23kt Gold)	25 023 360-28 0050
	Brushed Dark Platinum	25 023 360-99 0050

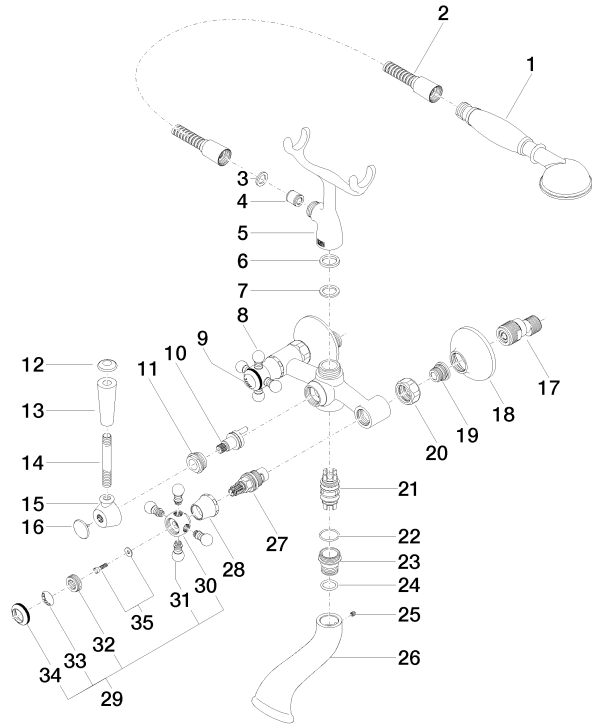
**MADISON Bath mixer for wall mounting with hand shower set - Brushed
Platinum**

MADISON

25 023 360
mm [inches]



25 023 360
Parts for other
finishes can be found
here: [Chrome](#)



MADISON Bath mixer for wall mounting with hand shower set - Brushed Platinum

MADISON

25 023 360

Spare parts list

No.	Item Number	Name	Quantity used	Delivery time
1	28 002 970-06 0050	MADISON Metal hand shower with porcelain insert (white) - Brushed Platinum	1	10
2	28 104 970-06	Metal shower hose 1/2" x 1/2" x 1250 mm - Brushed Platinum	1	2
3	90 14 20 002 00 90	seal	1	2
4	90 23 01 141 00 90	back-flow preventer	1	2
5	09 17 20 010-06	holder	1	60
6	09 14 05 008 90	seal	1	2
7	09 14 20 010 90	seal	1	2
8	04 20 36 002 07-06	handle (hot)	1	10
9	09 26 01 011 90	accessories	1	2
10	90 15 01 001 00 90	diverter	1	2
11	09 23 10 007 90	nut	1	2
12	09 30 30 062-06	screw	1	10
13	11 170 370-06	MADISON Lever insert - Brushed Platinum	1	10
14	09 28 22 013 90	pipe	1	2
15	09 18 20 011-06	base	1	10
16	09 30 30 064-06	screw	1	10
17	04 11 04 030 00 90	connection	2	2
18	09 27 39 010-06	rosette	2	60
19	04 29 05 014 00 90	nipple	2	2
20	09 23 30 010-06	nut	2	10
21	90 21 10 010 00 90	insert	1	2
22	90 14 10 056 00 90	seal	1	2
23	09 24 03 123 20 90	nipple	1	2
24	09 14 10 022 90	seal	1	2
25	90 31 11 030 00 90	pin	1	2
26	09 11 06 033 20-06	spout	1	60
27	90 90 03 131 00 90	top	2	2
28	09 21 02 055-06	cover	2	10
29	04 20 36 002 06-06	handle (cold)	1	10
30	09 20 36 002-06	handle	2	10
31	09 20 36 004-06	handle	8	10
32	09 20 83 006 90	handle	2	2
33	09 26 01 010 90	accessories	1	2
34	09 20 36 005-06	handle	2	10
35	04 30 30 029 00 90	fixing set	2	2