



**Rain shower:**

- rain shower Ø 300 mm
- overhead shower: rain flow
- max. rainshower flow 14 l/min
- Function from: l/min

**hand shower:**

**Control element:**

- rotary diverter for fixed-riser shower/hand shower
- 1500 mm metal shower hose

**Technical data:**

- shower with fixed riser projection 420mm
- height of fittings up to rain shower (bottom edge) 850mm
- height of fittings up to top edge of elbow 1167mm
- rosette for shower holder Ø 55mm
- rosette for wall mounting Ø 57mm
- rosette for shower mixer Ø 65mm
- gauge 150 mm - 13 mm
- 1/2" connection
- Pipe diameter 20 mm

**Notes:**

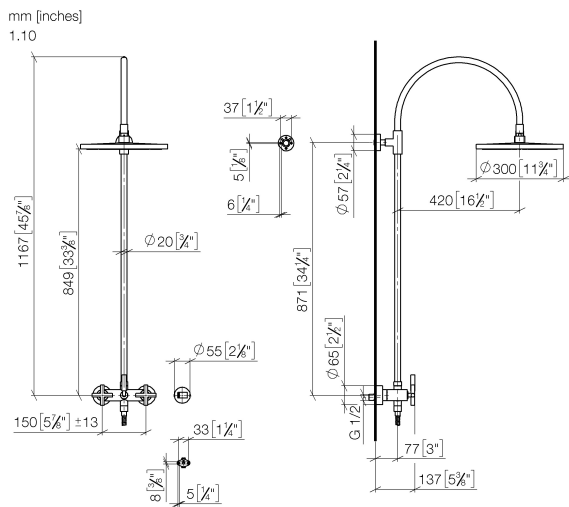
- This product can help a building meet the requirements of Green Building Rating Systems, e.g. LEED®, BREEAM®, DGNB

This article does not include a hand shower!

Intrinsic protection against back flow.

	Brushed Dark Brass	26 622 892-39 0050
	Chrome	26 622 892-00 0050
	Brushed Platinum	26 622 892-06 0050
	Platinum	26 622 892-08 0050
	Dark Chrome	26 622 892-19 0050
	Brushed Durabronze (23kt Gold)	26 622 892-28 0050
	Matte Black	26 622 892-33 0050
	Brushed Bronze	26 622 892-42 0050
	Brushed Champagne (22kt Gold)	26 622 892-46 0050
	Champagne (22kt Gold)	26 622 892-47 0050
	Brushed Chrome	26 622 892-93 0050
	Brushed Dark Platinum	26 622 892-99 0050

26 622 892 Product version from 4/1/2024



**Flow rate chart**

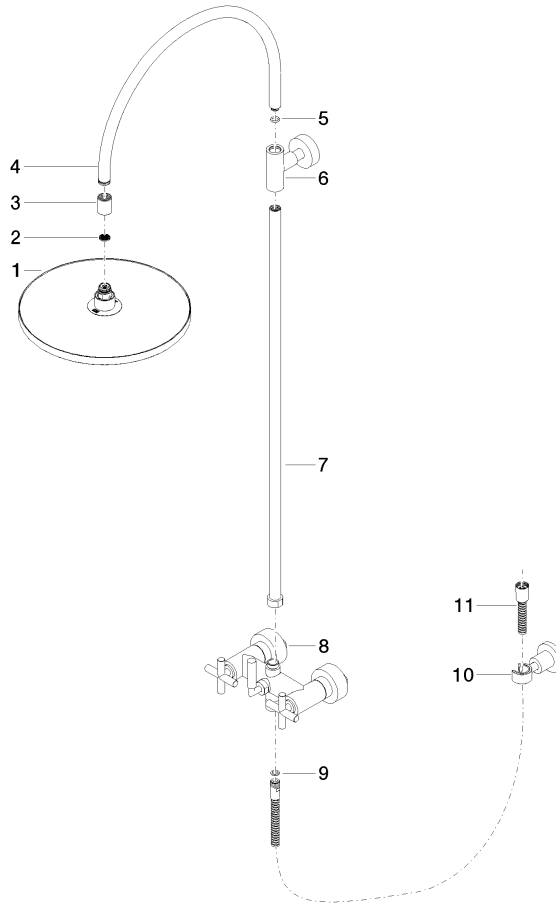


## TARA Shower pipe 300 mm - Brushed Dark Brass

TARA

26 622 892 Product version from 4/1/2024

Parts for other  
finishes can be found  
here: [Chrome](#)



### Spare parts list

No.	Item Number	Name	Quantity used	Delivery time
9	90 14 20 026 00 90	seal	1.00	2
6	90 17 11 037 00-39	holder	1.00	30
11	28 304 970-39	Metal shower hose 1/2" x 3/8" x 1500 mm - Brushed Dark Brass	1.00	30
3	09 24 03 177 20-39	adaptor	1.00	60
1	90 12 05 091 00-39	shower	1.00	-
Spare part can no longer be ordered, please order the replacement item				
10	28 050 892-39	TARA Wall bracket - Brushed Dark Brass	1.00	30
7	90 28 22 096 00-39	pipe	1.00	30
5	90 14 10 011 00 90	seal	1.00	2
8	04 17 10 020 01-39	fitting	1.00	60
4	04 28 22 097 20-39	spout	1.00	60
2	09 23 01 039 90	sieve	1.00	2