



**Rain shower:**

- rain shower Ø 300 mm
- overhead shower: rain flow
- max. rainshower flow 14 l/min
- Function from: l/min

**hand shower:**

**Control element:**

- rotary diverter for fixed-riser shower/hand shower
- 1500 mm metal shower hose

**Technical data:**

- shower with fixed riser projection 420mm
- height of fittings up to rain shower (bottom edge) 1007mm
- height of fittings up to top edge of elbow 1167mm
- rain shower with anti-scale system
- rosette for shower holder Ø 55mm
- rosette for wall mounting Ø 57mm
- rosette for shower mixer Ø 65mm
- Pipe diameter 20 mm
- gauge 150 mm - 13 mm
- 1/2" connection

**Notes:**

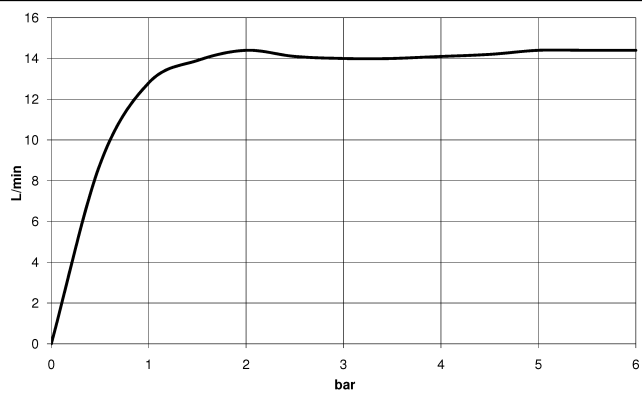
- This product can help a building meet the requirements of Green Building Rating Systems, e.g. LEED®, BREEAM®, DGNB

This article does not include a hand shower!

Intrinsic protection against back flow.

|   |                                |                    |
|---|--------------------------------|--------------------|
|    | Dark Chrome                    | 26 623 892-19 0050 |
|    | Chrome                         | 26 623 892-00 0050 |
|    | Brushed Platinum               | 26 623 892-06 0050 |
|    | Platinum                       | 26 623 892-08 0050 |
|    | Brushed Durabronze (23kt Gold) | 26 623 892-28 0050 |
|    | Matte Black                    | 26 623 892-33 0050 |
|    | Brushed Dark Brass             | 26 623 892-39 0050 |
|    | Brushed Bronze                 | 26 623 892-42 0050 |
|    | Brushed Champagne (22kt Gold)  | 26 623 892-46 0050 |
|   | Champagne (22kt Gold)          | 26 623 892-47 0050 |
|  | Brushed Chrome                 | 26 623 892-93 0050 |
|  | Brushed Dark Platinum          | 26 623 892-99 0050 |

Flow rate chart

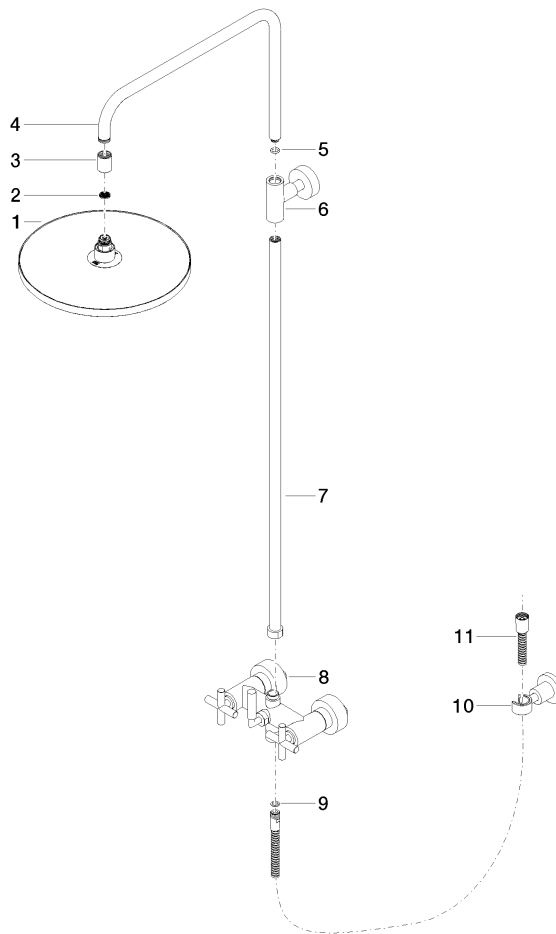


## TARA Shower pipe 300 mm - Dark Chrome

TARA

26 623 892 Product version from 4/1/2024

Parts for other  
finishes can be found  
here: [Chrome](#)



### Spare parts list

| No. | Item Number        | Name  | Quantity used | Delivery time |
|-----|--------------------|---|---------------|---------------|
| 11  | 28 304 970-19      | Metal shower hose 1/2" x 3/8" x 1500 mm - Dark Chrome | 1.00          | 20            |
| 2   | 09 23 01 039 90    | sieve   | 1.00          | 2             |
| 4   | 04 28 22 101 20-19 | spout   | 1.00          | 20            |
| 9   | 90 14 20 026 00 90 | seal  | 1.00          | 2             |
| 8   | 04 17 10 020 01-19 | fitting   | 1.00          | 20            |
| 5   | 90 14 10 011 00 90 | seal  | 1.00          | 2             |
| 3   | 09 24 03 177 20-19 | adaptor   | 1.00          | 20            |
| 7   | 90 28 22 096 00-19 | pipe  | 1.00          | 20            |
| 6   | 90 17 11 037 00-19 | holder  | 1.00          | 20            |
| 10  | 28 050 892-19      | TARA Wall bracket - Dark Chrome                       | 1.00          | 20            |
| 1   | 90 12 05 091 00-19 | shower  | 1.00          | 20            |