

TARA Showerpipe with shower mixer without hand shower 220 mm - Brushed Light Gold

TARA

26 632 892 Product version from 7/1/2022



- shower with fixed riser projection 420mm
- overhead shower: rain flow
- rain shower Ø 220 mm
- rain shower with anti-scale system
- max. rainshower flow 7 l/min
- rotary diverter for fixed-riser shower/hand shower
- height of fittings up to rain shower (bottom edge) 850mm
- height of fittings up to top edge of elbow 1167mm
- rosette for shower holder Ø 55mm
- rosette for wall mounting Ø 57mm
- rosette for shower mixer Ø 65mm
- gauge 150 mm - 13 mm
- 1500 mm metal shower hose
- 1/2" connection
- Pipe diameter 20 mm
- quick clearing
- This product can help a building meet the requirements of Green Building Rating Systems, e.g. LEED®, BREEAM®, DGNB

This article does not include a hand shower!

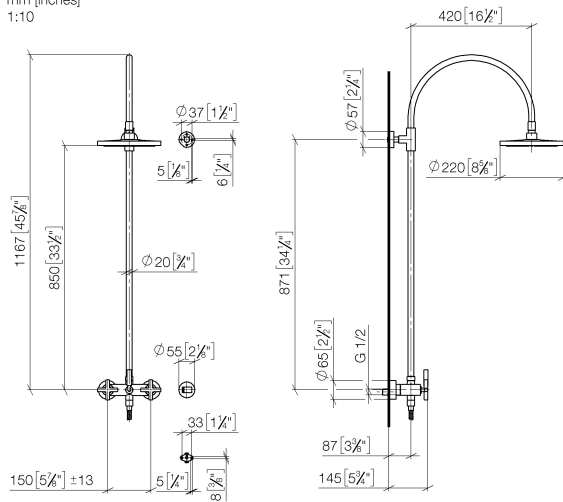
Intrinsic protection against back flow.

	Brushed Light Gold	26 632 892-27 0050
	Chrome	26 632 892-00 0050
	Brushed Platinum	26 632 892-06 0050
	Platinum	26 632 892-08 0050
	Dark Chrome	26 632 892-19 0050
	Brushed Durabronze (23kt Gold)	26 632 892-28 0050
	Matte Black	26 632 892-33 0050
	Brushed Bronze	26 632 892-42 0050
	Brushed Champagne (22kt Gold)	26 632 892-46 0050
	Champagne (22kt Gold)	26 632 892-47 0050
	Brushed Chrome	26 632 892-93 0050
	Brushed Dark Platinum	26 632 892-99 0050

TARA Showerpipe with shower mixer without hand shower 220 mm - Brushed Light Gold

TARA

26 632 892 Product version from 7/1/2022
mm [inches]
1:10



Flow rate chart

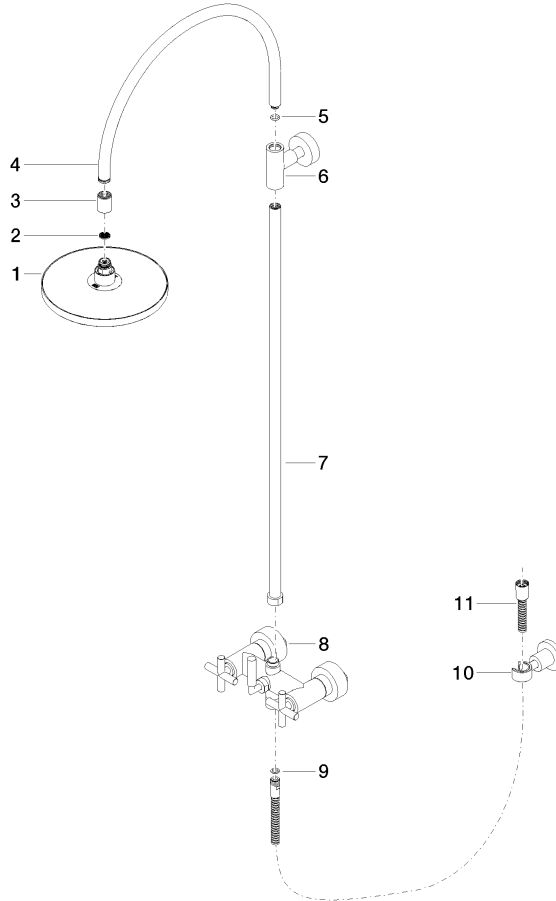


TARA Showerpipe with shower mixer without hand shower 220 mm - Brushed Light Gold

TARA

26 632 892 Product version from 7/1/2022

Parts for other
finishes can be found
here: [Chrome](#)



Spare parts list

No.	Item Number	Name	Quantity used	Delivery time
5	90 14 10 011 00 90	seal	1.00	2
11	28 304 970-27	Metal shower hose 1/2" x 3/8" x 1500 mm - Brushed Light Gold	1.00	30
8	04 17 10 020 01-27	fitting	1.00	60
7	90 28 22 096 00-27	pipe	1.00	30
2	09 23 01 039 90	sieve	1.00	2
10	28 050 892-27	holder	1.00	30
6	90 17 11 037 00-27	holder	1.00	30
9	90 14 20 026 00 90	seal	1.00	2
3	09 24 03 177 20-27	adaptor	1.00	60
4	04 28 22 097 20-27	spout	1.00	60
1	90 12 05 092 00-27	90120509200-27	1.00	30