

# WATER TUBE Kneipp wall elbow with hose holder with individual rosettes - Matte Black

SERIES-VARIOUS

27 823 979 Product version from 10/1/2023



- LAMINAR FLOW, max. flow rate 15 l/min (at 3 bar)
- with volume control
- rosette Ø 60 mm
- holder for Kneipp hose
- 1/2" wall elbow
- without hose

Intrinsic protection against back flow.

Product change as of 1.4.2023: max. flow 15 l/min

	Matte Black	27 823 979-33
	Chrome	27 823 979-00
	Brushed Platinum	27 823 979-06
	Platinum	27 823 979-08
	Dark Chrome	27 823 979-19
	Light Gold	27 823 979-26
	Brushed Light Gold	27 823 979-27
	Brushed Durabronze (23kt Gold)	27 823 979-28
	Brushed Dark Bronze	27 823 979-39
	Brushed Bronze	27 823 979-42
	Brushed Champagne (22kt Gold)	27 823 979-46
	Champagne (22kt Gold)	27 823 979-47
	Brushed Chrome	27 823 979-93
	Brushed Dark Platinum	27 823 979-99

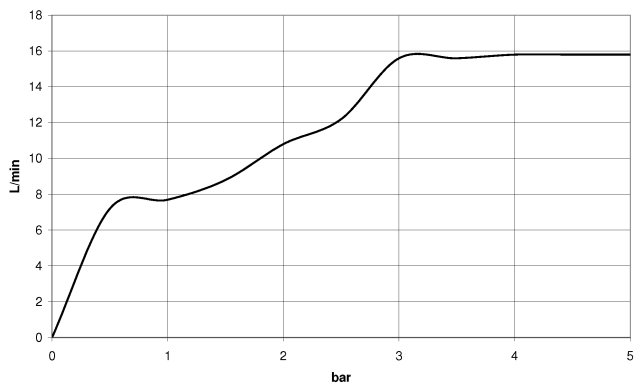
# WATER TUBE Kneipp wall elbow with hose holder with individual rosettes - Matte Black

SERIES-VARIOUS

27 823 979 Product version from 10/1/2023  
mm [inches]



Flow rate chart

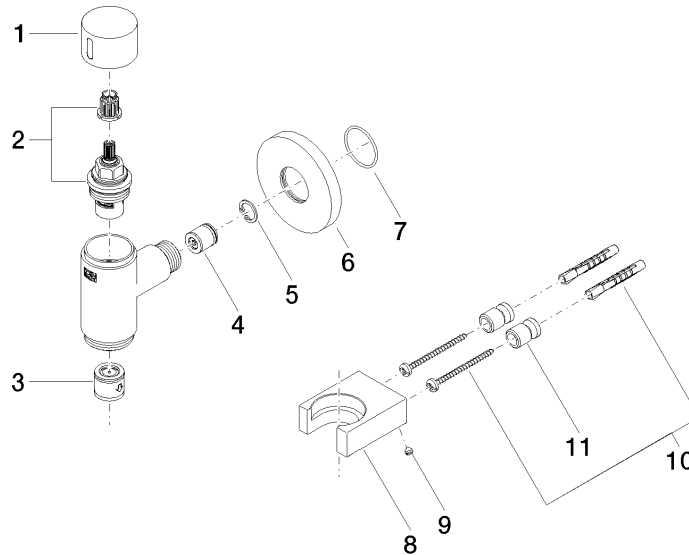


## WATER TUBE Kneipp wall elbow with hose holder with individual rosettes - Matte Black

SERIES-VARIOUS

27 823 979 Product version from 10/1/2023

Parts for other  
finishes can be found  
here: [Chrome](#)



### Spare parts list

No.	Item Number	Name	Quantity used	Delivery time
	11 08 17 20 726 90	holder	1.00	2
	1 09 20 97 021-33	handle	1.00	60
	5 09 16 01 014 90	ring	1.00	2
	4 09 23 01 046 90	back-flow preventer	1.00	2
	6 09 27 97 020-33	rosette	1.00	30
	9 09 31 11 148 90	pin	1.00	2
	3 90 23 01 045 00 90	back-flow preventer	1.00	2
	2 90 90 03 145 00 90	top	1.00	2
	10 05 17 20 726 02 90	fixing set	1.00	2
	7 09 14 10 135 90	seal	1.00	2
	8 09 17 20 023-33	holder	1.00	30