

**Affusion pipe with cover plate - Dark Chrome**

IMO



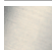






27 838 979



Fits: IMO, MEM, CL.1, CYO

- LAMINAR FLOW, max. flow rate 15 l/min (at 3 bar)
- 3/8" shower outlet
- cover plate 240 x 60 mm
- metal shower hose 1250mm with integrated anti-twist protection
- 1/2" connection
- plug-link mounting

Intrinsic protection against back flow.

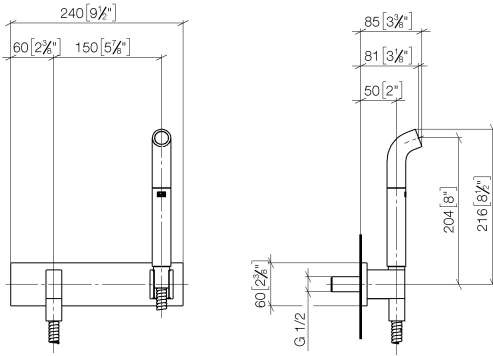
	Dark Chrome	27 838 979-19
	Chrome	27 838 979-00
	Brushed Platinum	27 838 979-06
	Platinum	27 838 979-08
	Brushed Light Gold	27 838 979-27
	Brushed Durabronze (23kt Gold)	27 838 979-28
	Matte Black	27 838 979-33
	Brushed Chrome	27 838 979-93
	Brushed Dark Platinum	27 838 979-99

**Recommended miscellaneous**

- |   |   |                      |
|---|---|----------------------|
|  | <p><b>Concealed wall elbow -</b><br/>         • max. recess depth 163 mm<br/>         • min. recess depth 90 mm</p> | <p>35 085 970 90</p> |
|---|---|----------------------|

27 838 979

mm [inches]



Flow rate chart



Certificates

LGA\_38675.

27 838 979

