

MADISON Metal hand shower with porcelain insert (white) - Brushed Dark Brass
MADISON

28 002 970
Product version from 7/1/2022



- spray head Ø 64mm
- COMPACT RAIN, max. flow rate 6.8 l/min (at 3 bar)
- 1/2" connection

Notes:

- This product can help a building meet the requirements of Green Building Rating Systems, e.g. LEED®, BREEAM®, DGNB

Intrinsic protection against back flow.

|   |                               |                    |
|---|-------------------------------|--------------------|
|  | Brushed Dark Brass            | 28 002 970-39 0050 |
|  | Chrome                        | 28 002 970-00 0050 |
|  | Brushed Platinum              | 28 002 970-06 0050 |
|  | Platinum                      | 28 002 970-08 0050 |
|  | Durabrass (23kt Gold)         | 28 002 970-09 0050 |
|  | Brushed Durabrass (23kt Gold) | 28 002 970-28 0050 |
|  | Brushed Chrome                | 28 002 970-93 0050 |
|  | Brushed Dark Platinum         | 28 002 970-99 0050 |

**MADISON Metal hand shower with porcelain insert (white) - Brushed Dark Brass**

MADISON

28 002 970 Product version from 7/1/2022  
mm [inches]



**Flow rate chart**

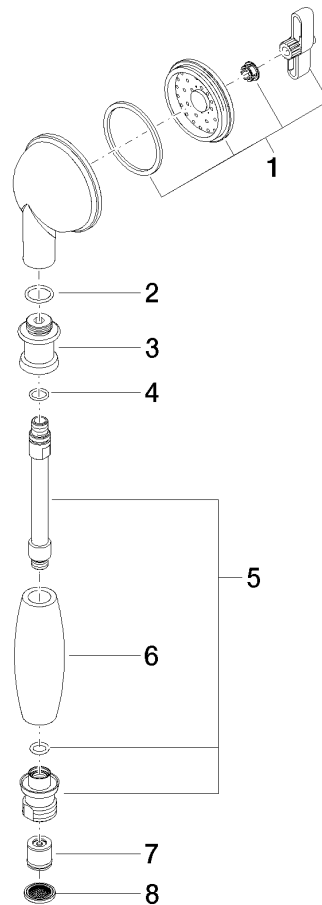


## MADISON Metal hand shower with porcelain insert (white) - Brushed Dark Brass

MADISON

28 002 970 Product version from 7/1/2022

Parts for other  
finishes can be found  
here: [Chrome](#)



### Spare parts list

| No.  | Item Number        | Name         | Quantity used | Delivery time |
|--|--------------------|--------------|---------------|---------------|
| 5  | 90 28 22 033 00-39 | insert       | 1.00          | 30            |
| 3  | 09 24 04 059 20-39 | nipple       | 1.00          | -             |
| Spare part can no longer be ordered, please order the replacement item |                    |              |               |               |
| 4  | 09 14 10 042 90    | seal         | 1.00          | 2             |
| 1  | 90 12 01 010 00 90 | set          | 1.00          | 2             |
| 6  | 11 167 820 60      | handle       | 1.00          | 2             |
| 7  | 09 23 01 077 90    | flow reducer | 1.00          | 2             |
| 2  | 09 14 10 069 90    | seal         | 1.00          | 2             |
| 8  | 09 23 01 039 90    | sieve        | 1.00          | 2             |