

Body spray without volume control - Brushed Chrome

TARA

28 518 979



- spray head Ø 55mm
- ball-joint pivotable through 25° (in any direction)
- HORIZONTAL RAIN, max. flow rate 5 l/min (at 3 bar)
- with anti-scale system
- rosette Ø 55 mm
- 1/2" connection
- This product can help a building meet the requirements of Green Building Rating Systems, e.g. LEED®, BREEAM®, DGNB

Fits: TARA, LISSÉ, VAIA, META

	Brushed Chrome	28 518 979-93 0050
	Chrome	28 518 979-00 0050
	Brushed Platinum	28 518 979-06 0050
	Platinum	28 518 979-08 0050
	Dark Chrome	28 518 979-19 0050
	Light Gold	28 518 979-26 0050
	Brushed Light Gold	28 518 979-27 0050
	Brushed Durabronze (23kt Gold)	28 518 979-28 0050
	Matte Black	28 518 979-33 0050
	Brushed Bronze	28 518 979-42 0050
	Brushed Champagne (22kt Gold)	28 518 979-46 0050
	Champagne (22kt Gold)	28 518 979-47 0050
	Brushed Dark Platinum	28 518 979-99 0050

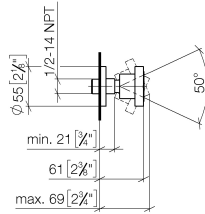
Recommended miscellaneous



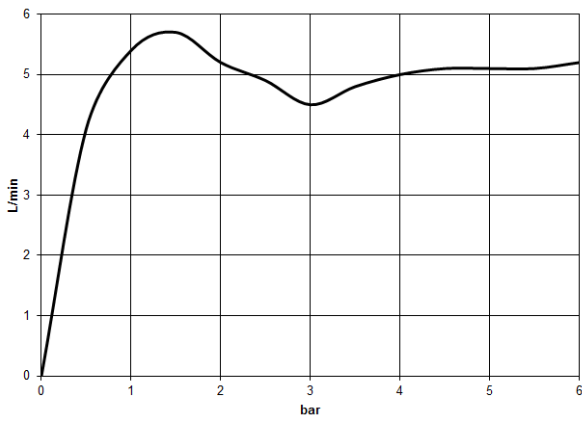
- Concealed wall elbow -** 35 085 970 90
- max. recess depth 163 mm
 - min. recess depth 90 mm

28 518 979

mm [inches]

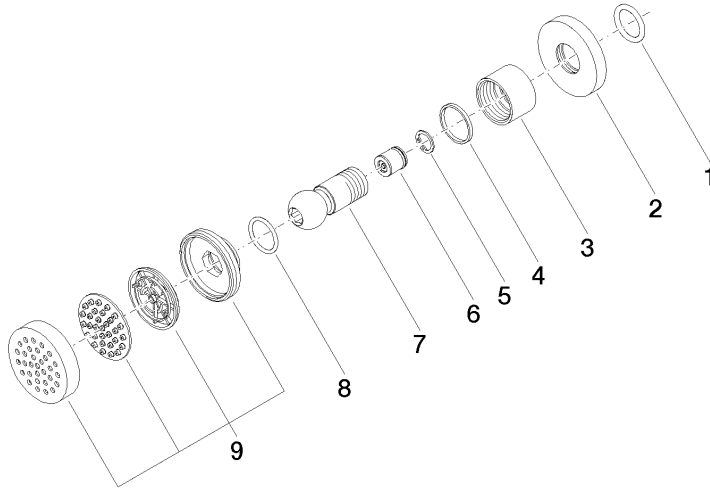


Flow rate chart



28 518 979

Product version from 7/1/2022





Body spray without volume control - Brushed Chrome

TARA

28 518 979

Spare parts list

Product version from 7/1/2022

No.	Item Number	Name	Quantity used	Delivery time
	90 14 10 026 00 90	seal	9	2