

SERIES SPECIFIC Rain shower with wall fixing 220 mm - Light Gold

SERIES SPECIFIC

28 645 670
Product version from 4/1/2025









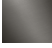
- rain shower Ø 220 mm
- Material rain shower: plastic
- PURE RAIN, max. flow rate 14 l/min (at 3 bar)
- Function from: l/min
- quick clearing
- with anti-scale system

**Technical dimensions:**

- 450mm projection
- rosette 65 x 65 mm
- 1/2" connection

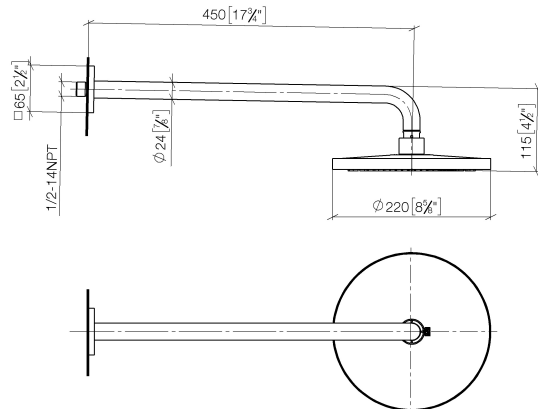
**Notes:**

- This product can help a building meet the requirements of Green Building Rating Systems, e.g. LEED®, BREEAM®, DGNB

	Light Gold	28 645 670-26 0050
	Chrome	28 645 670-00 0050
	Dark Chrome	28 645 670-19 0050
	Brushed Light Gold	28 645 670-27 0050
	Brushed Bronze	28 645 670-42 0050
	Brushed Chrome	28 645 670-93 0050
	Brushed Dark Platinum	28 645 670-99 0050

28 645 670 Product version from 4/1/2025

mm [inches]

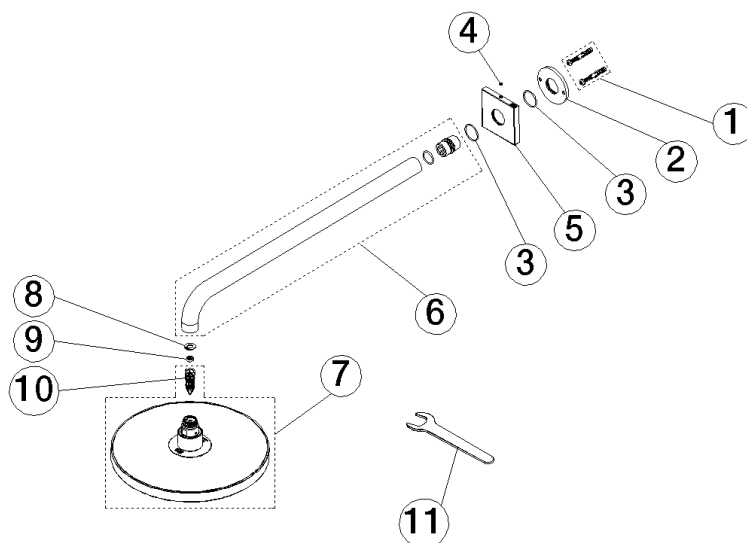


**Flow rate chart**



28 645 670 Product version from 4/1/2025

Parts for other finishes can be found here: [Chrome](#)



## Spare parts list

No.	Item Number	Name	Quantity used	Delivery time
	10 90 18 40 278 00 90	insert	1.00	2
	8 09 16 01 014 90	ring	1.00	2
	2 09 17 20 120 90	holder	1.00	2
	4 90 31 11 038 00 90	pin	1.00	2
	5 09 27 67 015-26	rosette	1.00	60
	11 90 30 09 069 00 90	key	1.00	2
	7 90 12 05 093 00-26	shower	1.00	-
Spare part can no longer be ordered, please order the replacement item				
	1 04 30 31 032 00 90	fixing set	1.00	2
	6 90 11 03 070 00-26	pipe	1.00	30
	9 09 23 01 136 90	flow reducer	1.00	2
	3 09 14 10 150 90	seal	2.00	2