

Rain shower with wall fixing 220 mm - Brushed Platinum

SERIES SPECIFIC

28 649 970 Product version from 7/1/2022



- 450mm projection
- rain shower Ø 220 mm
- PURE RAIN, max. flow rate 14 l/min (at 3 bar)
- rosette Ø 60 mm
- 1/2" connection
- with anti-scale system
- quick clearing
- This product can help a building meet the requirements of Green Building Rating Systems, e.g. LEED®, BREEAM®, DGNB

	Brushed Platinum	28 649 970-06 0050
	Chrome	28 649 970-00 0050
	Platinum	28 649 970-08 0050
	Dark Chrome	28 649 970-19 0050
	Light Gold	28 649 970-26 0050
	Brushed Light Gold	28 649 970-27 0050
	Brushed Durabrass (23kt Gold)	28 649 970-28 0050
	Matte Black	28 649 970-33 0050
	Brushed Bronze	28 649 970-42 0050
	Brushed Champagne (22kt Gold)	28 649 970-46 0050
	Champagne (22kt Gold)	28 649 970-47 0050
	Brushed Chrome	28 649 970-93 0050
	Brushed Dark Platinum	28 649 970-99 0050

Recommended miscellaneous

Concealed wall elbow -

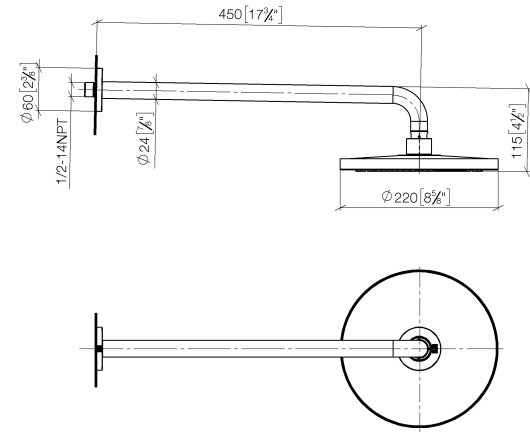
35 085 970 90



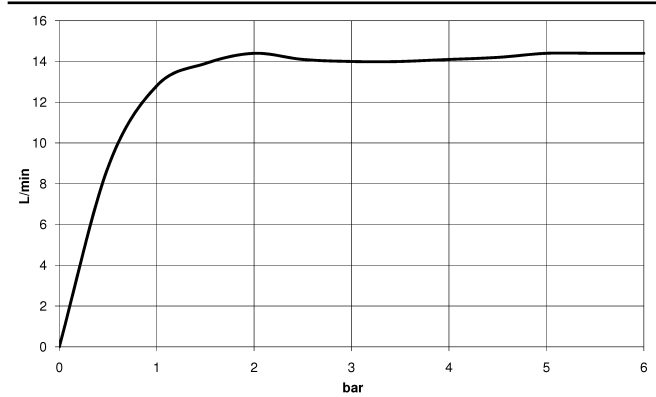
- max. recess depth 163 mm
- min. recess depth 90 mm

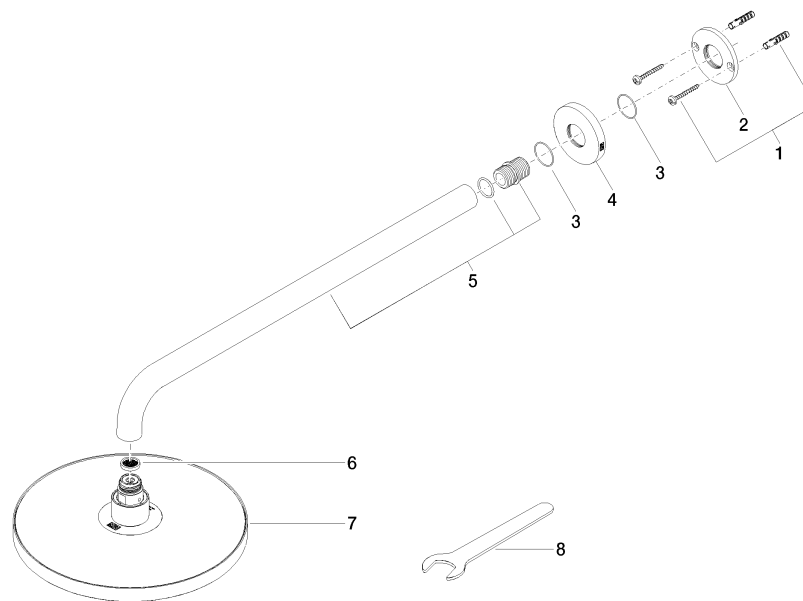
28 649 970 Product version from 7/1/2022

mm [inches]



Flow rate chart





Spare parts list

No.	Item Number	Name	Quantity used	Delivery time
	3 09 14 10 150 90	seal	2.00	2
	6 09 23 01 075 90	insert	1.00	2
	4 09 27 97 015-06	rosette	1.00	10
	5 90 11 03 070 00-06	pipe	1.00	10
	2 09 17 20 120 90	holder	1.00	2
	1 04 30 31 032 00 90	fixing set	1.00	2
	8 90 30 09 069 00 90	key	1.00	2
	7 90 12 05 092 00-06	shower	1.00	10