

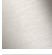


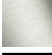
Rain shower with wall fixing 300 mm - Platinum

SERIES SPECIFIC

28 679 670 Product version from 7/1/2022

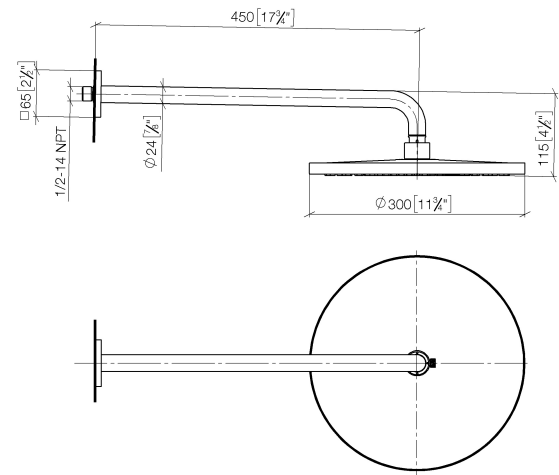


- 450mm projection
- rain shower Ø 300 mm
- PURE RAIN, max. flow rate 14 l/min (at 3 bar)
- rosette 65 x 65 mm
- 1/2" connection
- with anti-scale system
- quick clearing
- This product can help a building meet the requirements of Green Building Rating Systems, e.g. LEED®, BREEAM®, DGNB

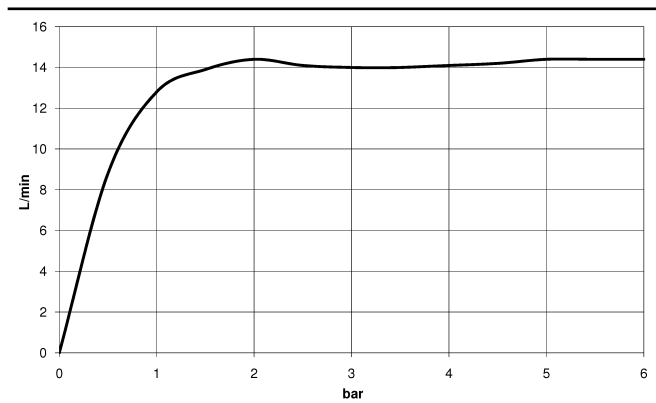
| | | |
|---|-------------------------------|--------------------|
|  | Platinum | 28 679 670-08 0050 |
|  | Chrome | 28 679 670-00 0050 |
|  | Brushed Platinum | 28 679 670-06 0050 |
|  | Dark Chrome | 28 679 670-19 0050 |
|  | Brushed Light Gold | 28 679 670-27 0050 |
|  | Brushed Durabrass (23kt Gold) | 28 679 670-28 0050 |
|  | Matte Black | 28 679 670-33 0050 |
|  | Brushed Champagne (22kt Gold) | 28 679 670-46 0050 |
|  | Champagne (22kt Gold) | 28 679 670-47 0050 |
|  | Brushed Chrome | 28 679 670-93 0050 |
|  | Brushed Dark Platinum | 28 679 670-99 0050 |

28 679 670 Product version from 7/1/2022

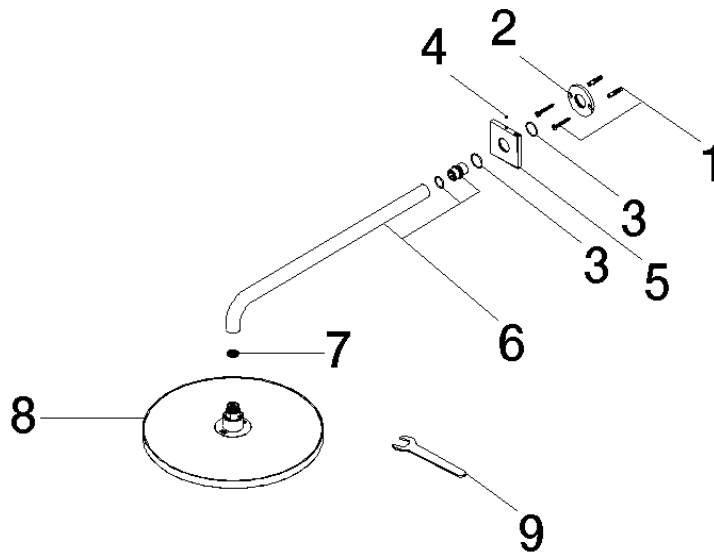
mm [inches]



Flow rate chart



Parts for other
finishes can be found
here: [Chrome](#)



Spare parts list

| No. | Item Number | Name | Quantity used | Delivery time |
|-----|--------------------|------------|---------------|---------------|
| 1 | 04 30 31 032 00 90 | fixing set | 1.00 | 2 |
| 3 | 09 14 10 150 90 | seal | 2.00 | 2 |
| 2 | 09 17 20 120 90 | holder | 1.00 | 2 |
| 7 | 09 23 01 075 90 | insert | 1.00 | 2 |
| 6 | 90 11 03 070 00-08 | pipe | 1.00 | 40 |
| 9 | 90 30 09 069 00 90 | key | 1.00 | 2 |
| 8 | 90 12 05 091 00-08 | shower | 1.00 | 40 |
| 4 | 90 31 11 038 00 90 | pin | 1.00 | 2 |
| 5 | 09 27 67 015-08 | rosette | 1.00 | 40 |