

MEM Single-lever basin mixer - Brushed Platinum

MEM

29 210 782 Product version from 3/10/2014 to 3/18/2019



- hole diameter 35 mm
- rosette 60 x 60 mm
- 3x screw-in M 10 x 1 pressure hose, leak-tested

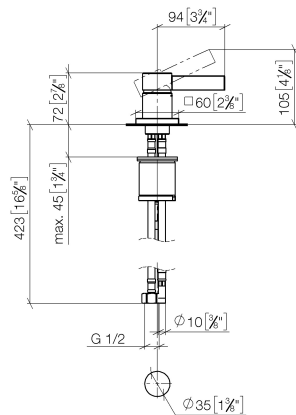
	Brushed Platinum	29 210 782-06
	Platinum	29 210 782-08
	Dark Chrome	29 210 782-19
	Brushed Durabronze (23kt Gold)	29 210 782-28
	Brushed Champagne (22kt Gold)	29 210 782-46
	Champagne (22kt Gold)	29 210 782-47
	Brushed Dark Platinum	29 210 782-99

MEM Single-lever basin mixer - Brushed Platinum

MEM

29 210 782 Product version from 3/10/2014 to 3/18/2019

mm [inches]



Flow rate chart



Codes & Standards

DIN 4109

Executive Order
no. 1007

ISO 3822

Ü-Zeichen



MEM Single-lever basin mixer - Brushed Platinum

MEM

29 210 782 Product version from 3/10/2014 to 3/18/2019

Certificates and sustainability

LGA_28

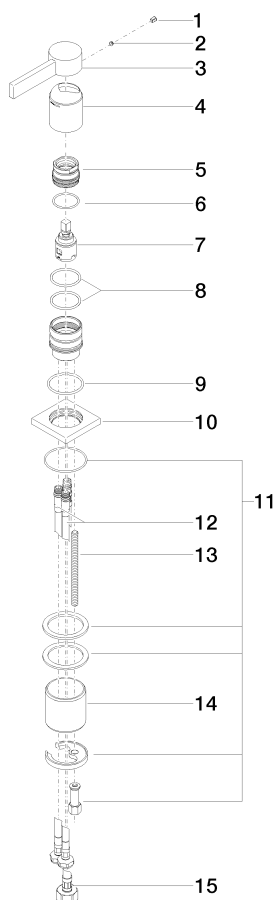
GDV_0400

MEM Single-lever basin mixer - Brushed Platinum

MEM

29 210 782 Product version from 3/10/2014 to 3/18/2019

Parts for other finishes can be found here: [Platinum](#)



Spare parts list

No.	Item Number	Name	Quantity used	Delivery time
15	04 30 04 019 00 90	hose	1.00	2
9	09 14 10 067 90	seal	1.00	2
7	90 15 05 042 00 90	cartridge	1.00	2
5	09 24 04 288 90	nut	1.00	2
8	09 14 10 192 90	seal	2.00	2
14	09 18 40 079 90	sleeve	1.00	2
12	04 30 04 104 00 90	hose	2.00	2
6	09 14 10 137 90	seal	1.00	2
4	09 11 02 289-06	cover	1.00	10
3	09 20 78 057-06	handle	1.00	10
11	04 30 11 038 02 90	fixing set	1.00	2
10	09 27 78 040-06	rosette	1.00	10
13	09 31 11 012 90	pin	1.00	2
1	90 31 20 109 00 90	plug	1.00	2
2	90 31 11 063 00 90	pin	1.00	2