

30 805 809



- 500mm projection
- pivoting spout
- laminar flow
- cold water only
- max. flow 5.7 l/min at 3 bar flow pressure
- min. recess depth 125 mm
- max. recess depth 80 mm
- lead-free
- This product can help a building meet the requirements of Green Building Rating Systems, e.g. LEED®, BREEAM®, DGNB

	Platinum	30 805 809-08
	Chrome	30 805 809-00
	Brushed Platinum	30 805 809-06
	Durabrace (23kt Gold)	30 805 809-09
	Dark Chrome	30 805 809-19
	Brushed Durabrace (23kt Gold)	30 805 809-28
	Brushed Champagne (22kt Gold)	30 805 809-46
	Champagne (22kt Gold)	30 805 809-47
	Brushed Chrome	30 805 809-93
	Brushed Dark Platinum	30 805 809-99

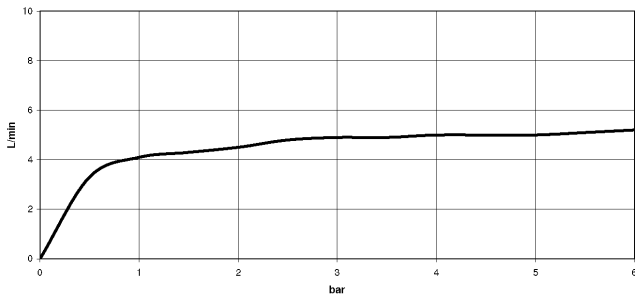
Required miscellaneous

POT FILLER Concealed wall elbow 35 087 970 90



- max. recess depth 125 mm
- min. recess depth 80 mm

Flow rate chart



Codes & Standards

DIN 4109

ISO 3822

Scottish Water
Byelaws

UK Water Supply
Regulations

Ü-Zeichen



VAIA POT FILLER Cold-water valve - Platinum

VAIA

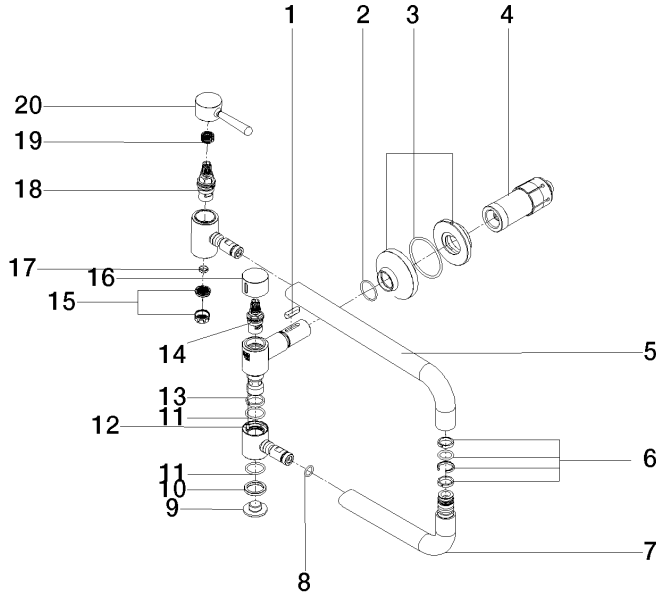
30 805 809

Certificates

LGA_29

WRAS_240702

Product version from 7/1/2023





VAIA POT FILLER Cold-water valve - Platinum

VAIA

30 805 809

Spare parts list

Product version from 7/1/2023

No.	Item Number	Name	Quantity used	Delivery time
	90 16 04 001 00 90	spring	22	2