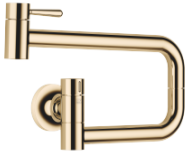


30 805 809



- 500mm projection
- pivoting spout
- laminar flow
- cold water only
- max. flow 5.7 l/min at 3 bar flow pressure
- min. recess depth 125 mm
- max. recess depth 80 mm
- lead-free
- This product can help a building meet the requirements of Green Building Rating Systems, e.g. LEED®, BREEAM®, DGNB

|  |                               |               |
|--|-------------------------------|---------------|
|    | Durabronz (23kt Gold)         | 30 805 809-09 |
|    | Chrome                        | 30 805 809-00 |
|    | Brushed Platinum              | 30 805 809-06 |
|    | Platinum                      | 30 805 809-08 |
|    | Dark Chrome                   | 30 805 809-19 |
|    | Brushed Durabronz (23kt Gold) | 30 805 809-28 |
|    | Brushed Champagne (22kt Gold) | 30 805 809-46 |
|    | Champagne (22kt Gold)         | 30 805 809-47 |
|   | Brushed Chrome                | 30 805 809-93 |
|  | Brushed Dark Platinum         | 30 805 809-99 |

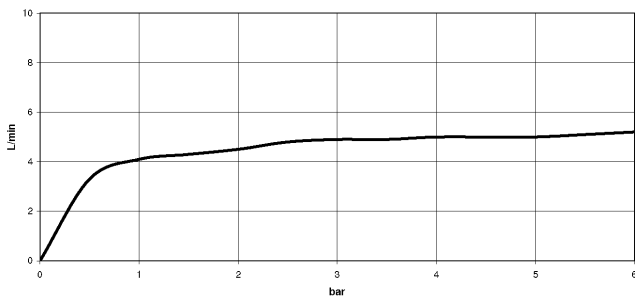
**Required miscellaneous**

**POT FILLER Concealed wall elbow** 35 087 970 90



- max. recess depth 125 mm
- min. recess depth 80 mm

Flow rate chart



Codes & Standards

DIN 4109

ISO 3822

Scottish Water  
Byelaws

UK Water Supply  
Regulations

Ü-Zeichen



VAIA POT FILLER Cold-water valve - Durabronz (23kt Gold)

VAIA

30 805 809

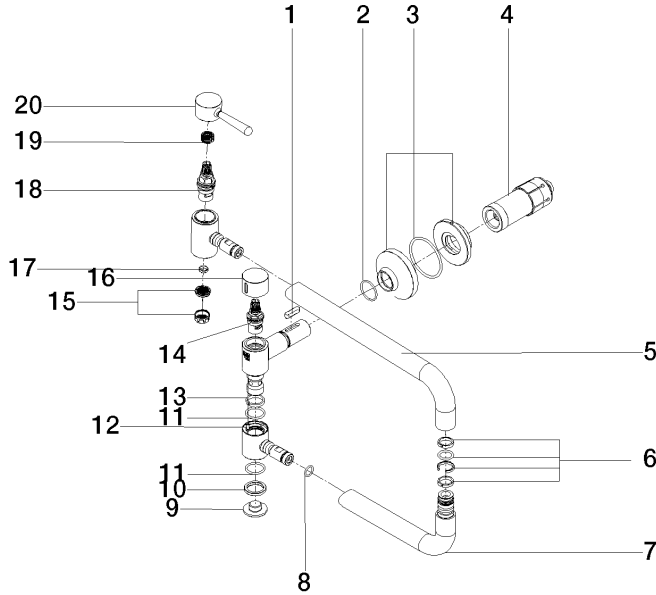
Certificates

LGA\_29

WRAS\_240702

30 805 809

Product version from 7/1/2023





VAIA POT FILLER Cold-water valve - Durabronz (23kt Gold)

VAIA

30 805 809

**Spare parts list**

**Product version from 7/1/2023**

| No. | Item Number        | Name   | Quantity used | Delivery time |
|-----|--------------------|--------|---------------|---------------|
|     | 90 16 04 001 00 90 | spring | 22            | 2             |