

30 805 809 Product version from 7/1/2023



- 500mm projection
- pivoting spout
- laminar flow
- cold water only
- max. flow 5.7 l/min at 3 bar flow pressure
- min. recess depth 125 mm
- max. recess depth 80 mm
- lead-free
- This product can help a building meet the requirements of Green Building Rating Systems, e.g. LEED®, BREEAM®, DGNB
- WRAS

	Dark Chrome	30 805 809-19
	Chrome	30 805 809-00
	Brushed Platinum	30 805 809-06
	Platinum	30 805 809-08
	Durabrass (23kt Gold)	30 805 809-09
	Brushed Durabrass (23kt Gold)	30 805 809-28
	Brushed Bronze	30 805 809-42
	Brushed Champagne (22kt Gold)	30 805 809-46
	Champagne (22kt Gold)	30 805 809-47
	Brushed Chrome	30 805 809-93
	Brushed Dark Platinum	30 805 809-99

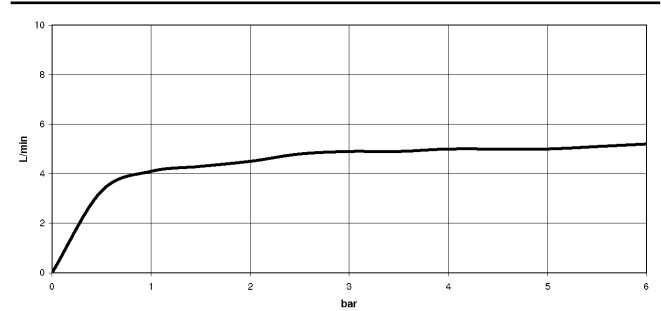
**Required miscellaneous**

**POT FILLER Concealed wall elbow 35 087 970 90**



- min. recess depth 80 mm
- max. recess depth 125 mm

Flow rate chart



Codes & Standards			
ASME A112.18.1	cUPC	DIN 4109	ISO 3822
NSF372	NSF61	Scottish Water Byelaws	UK Water Supply Regulations
Ü-Zeichen			



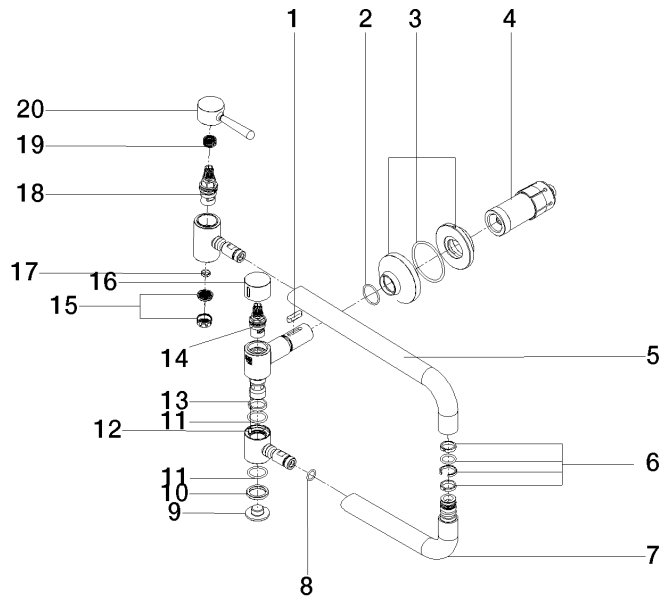
VAIA POT FILLER Cold-water valve - Dark Chrome

VAIA

30 805 809 Product version from 7/1/2023

Certificates and sustainability

LGA\_29 IAPMO\_N-4976 WRAS\_240702 IAPMO\_6397 IAPMO\_4976 (



## Spare parts list

No.	Item Number	Name	Quantity used	Delivery time
6	90 28 10 199 00 90	gasket kit	1.00	2
17	09 14 05 002 90	seal	1.00	2
16	09 20 62 025-19	handle	1.00	60
9	09 21 02 028-19	lid	1.00	60
5	09 28 22 208-19	pipe	1.00	60
1	90 16 04 001 00 90	spring	1.00	2
11	09 14 10 015 90	seal	2.00	2
3	90 27 87 039 00-19	rosette	1.00	20
20	90 20 80 051 00-19	handle	1.00	20
8	90 14 10 077 00 90	seal	2.00	2
15	09 29 03 089 90	aerator	1.00	60
19	90 12 12 232 00 90	fixing cap	1.00	2
2	90 14 10 063 00 90	seal	1.00	2
12	09 31 11 109 90	pin	1.00	2
13	09 28 10 136 90	ring	1.00	2
4	90 30 01 213 00 90	connection	1.00	2
14	90 90 03 171 00 90	top	1.00	2
18	90 90 03 146 00 90	top	1.00	2
7	04 28 22 221 10-19	pipe	1.00	60
10	09 28 10 139 90	ring	1.00	2