




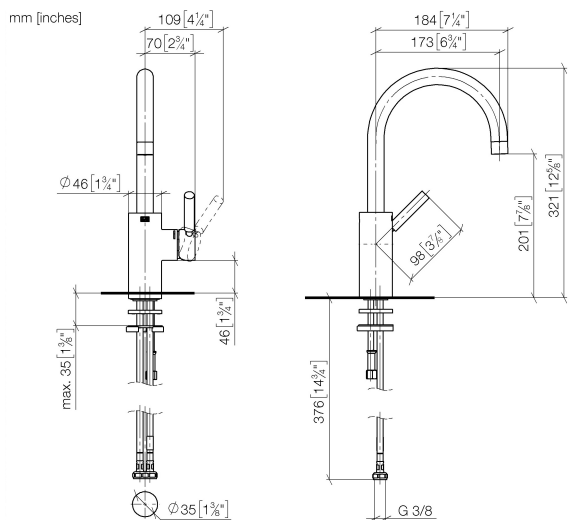
33 505 626



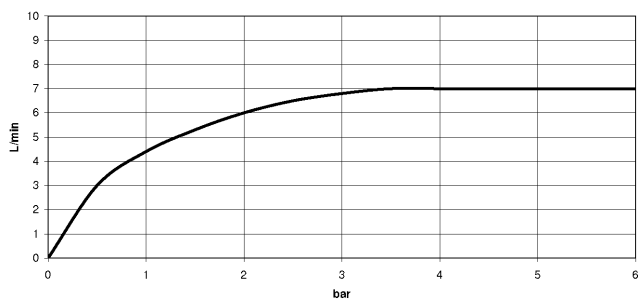
- 173mm projection
- pivotable spout 360°
- circular, air-enriched flow
- height of mixer 313 mm
- height up to aerator 193 mm
- hole diameter 35 mm
- 2x screw-in M 10 x 1 pressure hose, leak-tested
- max. flow 7 l/min
- lead-free
- WRAS

	Chrome	33 505 626-00
	Matte Black	33 505 626-33
	Brushed Chrome	33 505 626-93

33 505 626



Flow rate chart



### Codes & Standards

DIN 4109

ISO 3822

Scottish Water  
Byelaws

UK Water Supply  
Regulations

Ü-Zeichen



## EDITION PRO Single-lever basin mixer without pop-up waste - Chrome

---

EDITION PRO

33 505 626

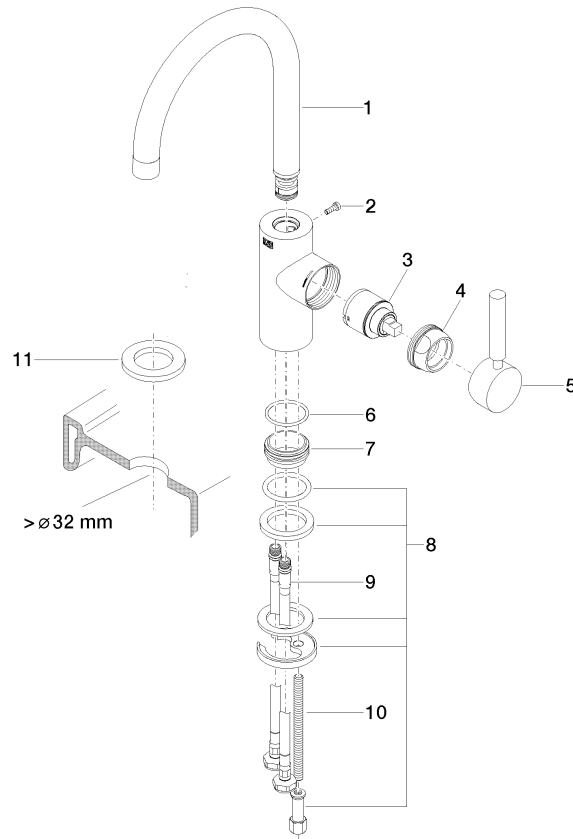
Certificates and sustainability

---

WRAS\_2201

LGA\_18

33 505 626



## Spare parts list

No.	Item Number	Name	Quantity used	Delivery time
9	04 30 04 104 00 90	hose	2.00	2
2	09 30 30 080 90	screw	1.00	2
10	09 31 11 012 90	pin	1.00	2
6	09 14 10 119 90	seal	1.00	2
8	04 30 11 085 88 90	fixing set	1.00	2
7	09 28 10 109-07	ring	1.00	30
1	90 28 22 162 02-00	spout	1.00	10
11	12 730 970-00	Rosette for tap hole cover - Chrome	1.00	10
4	09 24 04 107-00	nut	1.00	10
5	90 20 88 046 00-00	handle	1.00	10
3	90 15 05 045 00 90	cartridge	1.00	2