




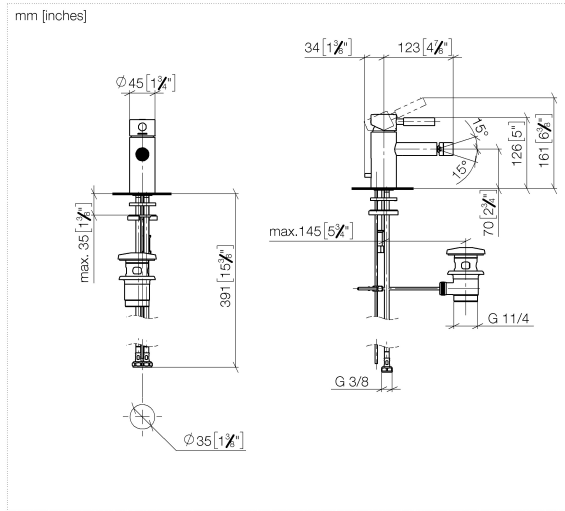
33 600 626    Product version from 4/1/2023



- 125mm projection
- ball-joint pivotable through 15° (in any direction)
- circular, air-enriched flow
- height of mixer 130 mm
- height up to aerator 70 mm
- hole diameter 35 mm
- 2x screw-in M 10 x 1 pressure hose, leak-tested
- max. flow 7 l/min

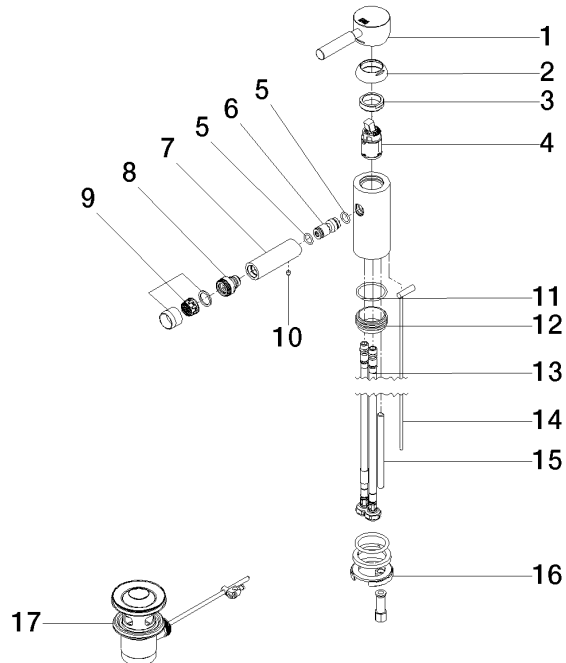
	Matte Black	33 600 626-33
	Chrome	33 600 626-00
	Brushed Chrome	33 600 626-93

33 600 626 Product version from 4/1/2023



33 600 626 Product version from 4/1/2023

Parts for other  
finishes can be found  
here: [Chrome](#)



## Spare parts list

No.	Item Number	Name	Quantity used	Delivery time
	3 09 24 04 130-07	nut	1.00	30
	8 04 21 40 007 00-33	joint	1.00	30
	4 90 15 05 041 00 90	cartridge	1.00	2
	10 90 31 11 030 00 90	pin	2.00	2
	11 09 14 10 119 90	seal	1.00	2
	7 09 11 06 086 20-33	spout	1.00	60
	6 09 24 04 025 10 90	nipple	1.00	2
	16 04 30 11 085 88 90	fixing set	1.00	2
	1 90 20 62 046 00-33	handle	1.00	30
	12 09 28 10 109-07	ring	1.00	30
	15 09 31 11 012 90	pin	1.00	2
	5 09 14 10 003 90	seal	2.00	2
	14 04 20 62 030 80-33	pull-rod	1.00	30
	9 90 23 01 119 02-33	aerator	1.00	30
	17 90 11 01 001 00-33	pop-up waste	1.00	30
	13 04 30 04 104 00 90	hose	2.00	2
	2 09 28 30 008-33	cover	1.00	30