

## META Single-lever bidet mixer with pop-up waste - Brushed Bronze

META

33 600 660 Product version from 1/23/2020 to 4/1/2025



- 125mm projection
- ball-joint pivotable through 15° (in any direction)
- circular, air-enriched flow
- height of mixer 133 mm
- height up to aerator 55 mm
- hole diameter 35 mm
- 2x screw-in M 8 x 1 pressure hose, leak-tested
- max. flow 5.7 l/min
- WRAS

	Brushed Bronze	33 600 660-42
	Chrome	33 600 660-00
	Brushed Platinum	33 600 660-06
	Dark Chrome	33 600 660-19
	Light Gold	33 600 660-26
	Brushed Light Gold	33 600 660-27
	Matte Black	33 600 660-33
	Brushed Dark Brass	33 600 660-39
	Brushed Champagne (22kt Gold)	33 600 660-46
	Champagne (22kt Gold)	33 600 660-47
	Brushed Chrome	33 600 660-93
	Brushed Dark Platinum	33 600 660-99

## META Single-lever bidet mixer with pop-up waste - Brushed Bronze

META

33 600 660 Product version from 1/23/2020 to 4/1/2025

mm [inches]



### Flow rate chart



### Codes & Standards

ASME A112.18.1

cUPC



## META Single-lever bidet mixer with pop-up waste - Brushed Bronze

---

META

33 600 660 Product version from 1/23/2020 to 4/1/2025

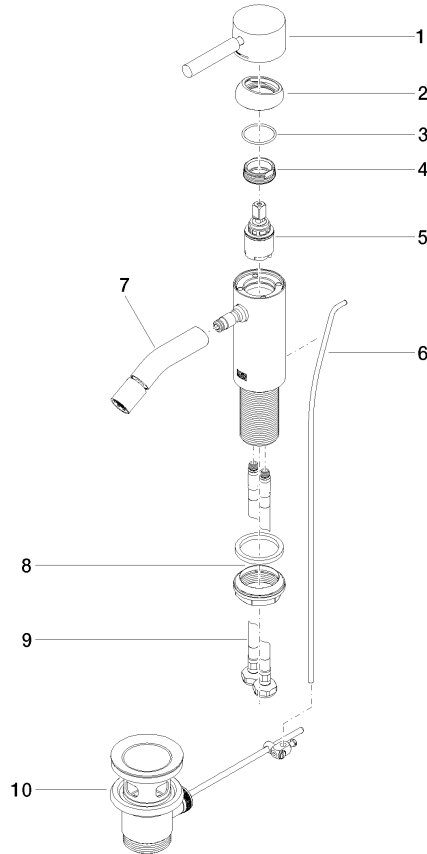
### Certificates and sustainability

---

IAPMO\_4976 (

33 600 660 Product version from 1/23/2020 to 4/1/2025

Parts for other  
finishes can be found  
here: [Chrome](#)



## Spare parts list

No.	Item Number	Name	Quantity used	Delivery time
	3 09 14 10 091 90	seal	1.00	2
	5 90 15 05 044 00 90	cartridge	1.00	2
	7 90 11 06 209 00-42	spout	1.00	30
	2 09 28 30 041-42	cover	1.00	60
	1 90 20 66 002 00-42	handle	1.00	30
	8 04 23 10 044 07 90	fixing set	1.00	2
	9 04 30 04 101 00 90	hose	2.00	2
	6 09 31 09 110-42	pull-rod	1.00	60
	10 90 11 01 001 00-42	pop-up waste	1.00	30
	4 09 24 04 266 90	nut	1.00	2