

ENO Single-lever mixer - Chrome


ENO

33 800 760    Product version up to 5/15/2020



- 220mm projection
- pivotable spout 130°
- air-enriched flow
- height of mixer 167 mm
- height up to aerator 145 mm
- hole diameter 35 mm
- max. flow 8 l/min at 3 bar flow pressure
- lead-free
- This product can help a building meet the requirements of Green Building Rating Systems, e.g. LEED®, BREEAM®, DGNB
- WRAS


Recommended miscellaneous



Dispenser without rosette - Chrome

82 424 970-00

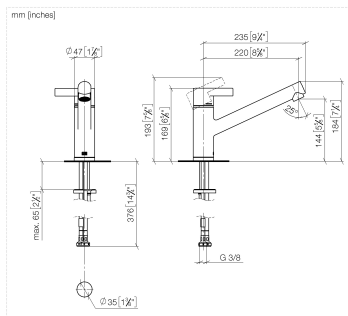
Recommended miscellaneous



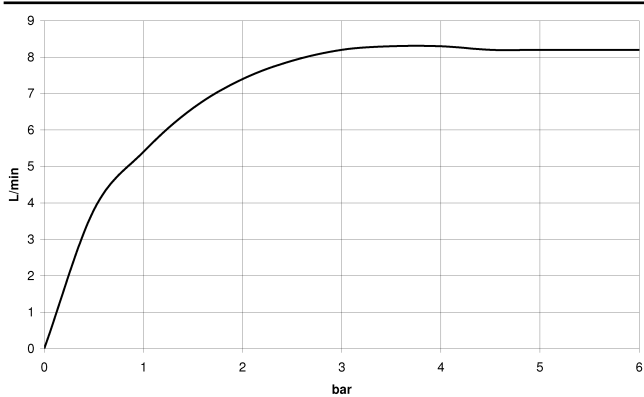
Strainer waste with control handle - Chrome

10 712 970-00

33 800 760 Product version up to 5/15/2020



**Flow rate chart**



**Codes & Standards**

DIN 4109

EN 817

Executive Order  
no. 1007

ISO 3822

Ü-Zeichen

VA-Zeichen



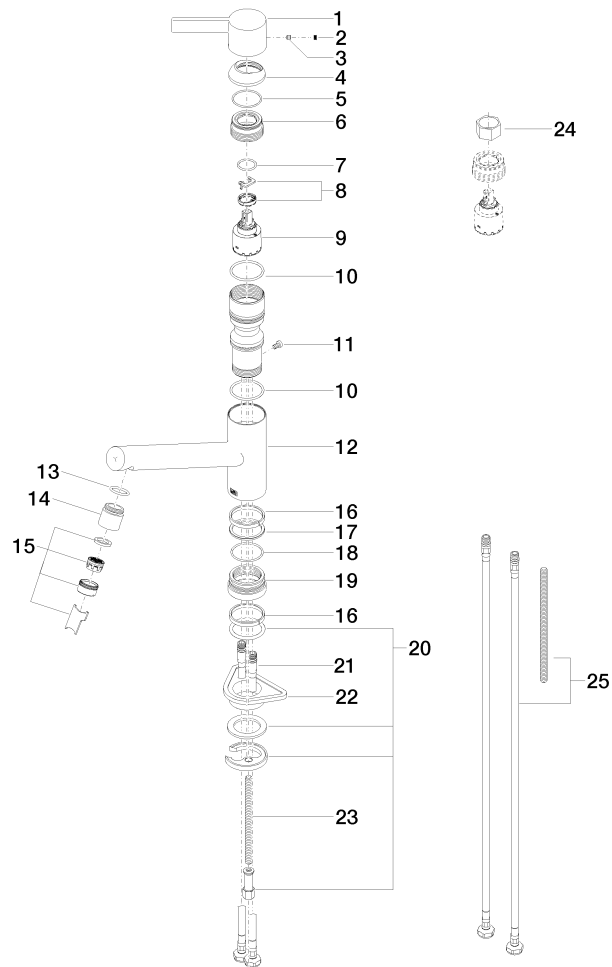
ENO Single-lever mixer - Chrome

ENO

33 800 760    Product version up to 5/15/2020

Certificates and sustainability

ETA_20	GDV_0400	LGA_19
--------	----------	--------





## ENO Single-lever mixer - Chrome

ENO

33 800 760 Product version up to 5/15/2020

### Spare parts list

No.	Item Number	Name	Quantity used	Delivery time
5	09 14 10 102 90	seal	1.00	2
25	12 803 970 90	extension	1.00	60
12	09 19 76 002-00	sleeve	1.00	10
9	90 15 05 064 00 90	cartridge	1.00	2
16	09 14 15 029 90	ring	2.00	2
23	09 31 11 091 90	pin	1.00	2
11	09 30 30 112 90	screw	1.00	2
19	09 27 76 001-00	rosette	1.00	10
14	09 24 04 164 10-00	nipple	1.00	10
6	09 24 04 270 90	nut	1.00	2
10	09 14 10 038 90	seal	1.00	2
18	09 14 10 034 90	seal	1.00	2
7	09 14 10 031 90	seal	1.00	2
17	09 28 10 144 90	ring	1.00	2
20	04 30 11 038 75 90	fixing set	1.00	2
15	90 23 01 026 07-00	aerator	1.00	10
4	09 28 30 012-00	cover	1.00	10
13	09 14 10 100 90	seal	1.00	2
1	09 20 76 001-00	handle	1.00	10
21	04 30 04 104 00 90	hose	2.00	2
22	09 18 40 090 90	sleeve	1.00	2
3	90 31 11 030 00 90	pin	1.00	2
8	90 28 10 148 00 90	accessories	1.00	2
2	90 31 20 109 00 90	plug	1.00	2
24	90 30 09 031 00 90	key	1.00	2