

SYNC Single-lever mixer Pull-down with spray function - Brushed Dark Platinum

SYNC

33 870 895 Product version from 2/26/2015



- 240mm projection
- pivotable spout 360°
- Optional swivel limiter available with swivel limiter set 12 821 970 90
- laminar and spray flow
- height of mixer 444 mm
- height up to laminar flow regulator 240 mm
- hole diameter 35 mm
- 1800 mm metal shower hose
- sprayface with anti-scaling system
- max. flow 10.4 l/min at 3 bar flow pressure
- lead-free
- Flow modes can be changed while the water is running
- This product can help a building meet the requirements of Green Building Rating Systems, e.g. LEED®, BREEAM®, DGNB

Intrinsic protection against back flow.

| | | |
|--|--------------------------------|---------------|
| | Brushed Dark Platinum | 33 870 895-99 |
| | Chrome | 33 870 895-00 |
| | Brushed Platinum | 33 870 895-06 |
| | Platinum | 33 870 895-08 |
| | Durabronze (23kt Gold) | 33 870 895-09 |
| | Dark Chrome | 33 870 895-19 |
| | Brushed Durabronze (23kt Gold) | 33 870 895-28 |
| | Matte Black | 33 870 895-33 |
| | Brushed Bronze | 33 870 895-42 |
| | Brushed Champagne (22kt Gold) | 33 870 895-46 |
| | Champagne (22kt Gold) | 33 870 895-47 |
| | Brushed Chrome | 33 870 895-93 |

Recommended miscellaneous

Swivel limitation set -

12 821 970 90



Recommended miscellaneous

**Dispenser without rosette -
Brushed Dark Platinum**

82 424 970-99



Recommended miscellaneous

**Strainer waste with control handle
- Brushed Dark Platinum**

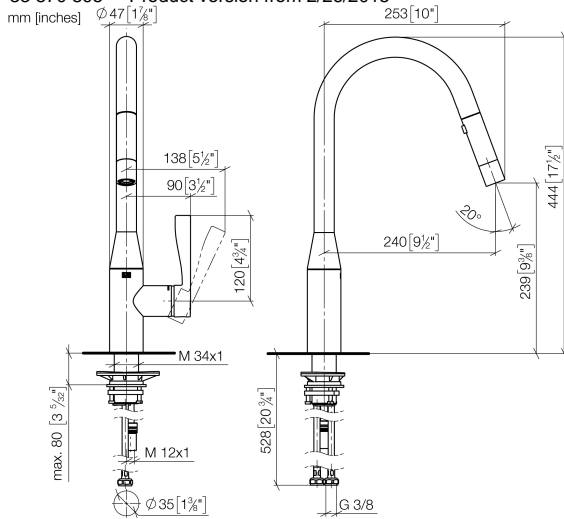
10 712 970-99



SYNC Single-lever mixer Pull-down with spray function - Brushed Dark Platinum

SYNC

33 870 895 Product version from 2/26/2015



Flow rate chart



Codes & Standards

DIN 4109

EN 1717

Executive Order
no. 1007

ISO 3822

Ü-Zeichen



SYNC Single-lever mixer Pull-down with spray function - Brushed Dark Platinum

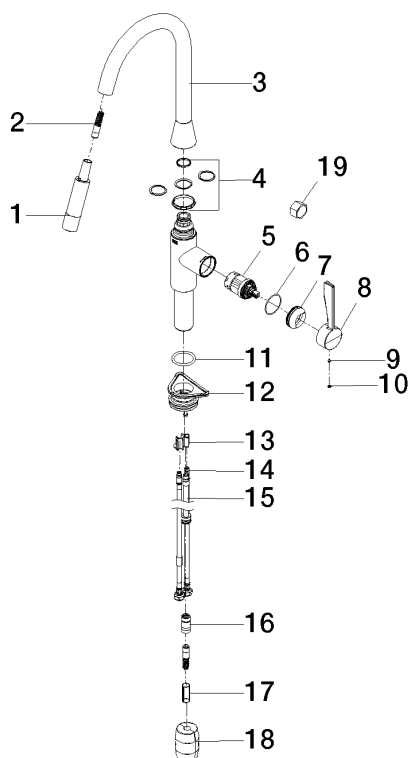
SYNC

33 870 895 Product version from 2/26/2015

Certificates and sustainability

Belgaqua_21-027-2 LGA_28

GDV_0400



Spare parts list

| No. | Item Number | Name | Quantity used | Delivery time |
|--|-----------------------|-------------------------|---------------|---------------|
| | 10 90 31 20 087 00-99 | plug | 1.00 | 20 |
| | 18 04 21 50 010 00 90 | accessories | 1.00 | 2 |
| | 8 09 20 89 020-99 | handle | 1.00 | 20 |
| | 7 09 28 30 030-99 | cover | 1.00 | 20 |
| | 16 90 24 03 253 00 90 | adaptor | 1.00 | 2 |
| | 17 09 30 03 038 90 | hose | 1.00 | 2 |
| | 6 09 14 10 190 90 | seal | 1.00 | 2 |
| | 3 90 28 22 302 00-99 | spout | 1.00 | 20 |
| | 9 90 31 11 063 00 90 | pin | 1.00 | 2 |
| | 19 90 30 09 031 00 90 | key | 1.00 | 2 |
| | 4 12 821 970 90 | Swivel limitation set - | 1.00 | 2 |
| | 13 09 20 93 056 90 | insert | 1.00 | 2 |
| | 11 09 14 10 036 90 | seal | 1.00 | 2 |
| | 12 04 30 11 040 00 90 | fixing set | 1.00 | 2 |
| | 1 90 12 11 184 00-99 | shower | 1.00 | 20 |
| | 5 90 15 05 046 05 90 | cartridge | 1.00 | 2 |
| | 14 04 30 04 101 00 90 | hose | 2.00 | 2 |
| | 2 04 30 02 120 00-99 | hose | 1.00 | - |
| Spare part can no longer be ordered, please order the replacement item | | | | |
| | 15 04 28 20 067 00 90 | pipe | 1.00 | 2 |