

## Showerpipe with shower thermostat without hand shower - Brushed Dark Brass SERIES SPECIFIC

34 459 979 Product version from 7/1/2022



- shower with fixed riser projection 453mm
- overhead shower: rain flow
- rain shower Ø 220 mm
- rain shower with anti-scale system
- max. rainshower flow 14 l/min
- rotary diverter with volume control and shut-off function
- slide-on rosettes Ø 70 mm
- height of fittings up to rain shower (bottom edge) 1009mm
- height of fittings up to top edge of elbow 1150mm
- gauge 150 mm - 13 mm
- metal shower hose 1750mm with integrated anti-twist protection
- 1/2" connection
- slide bar
- Pipe diameter 23.5 mm
- quick clearing
- This product can help a building meet the requirements of Green Building Rating Systems, e.g. LEED®, BREEAM®, DGNB

This article does not include a hand shower!

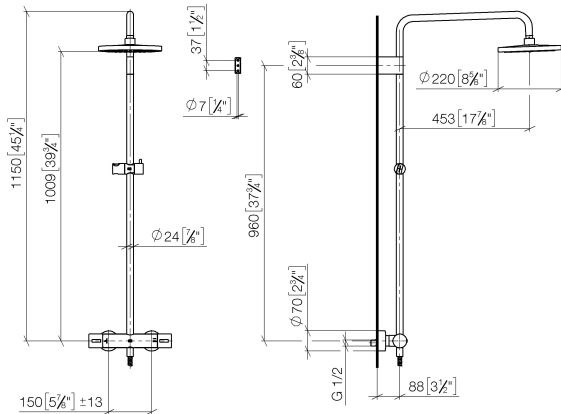
Intrinsic protection against back flow.

	Brushed Dark Brass	34 459 979-39 0050
	Chrome	34 459 979-00 0050
	Brushed Platinum	34 459 979-06 0050
	Platinum	34 459 979-08 0050
	Dark Chrome	34 459 979-19 0050
	Light Gold	34 459 979-26 0050
	Brushed Light Gold	34 459 979-27 0050
	Brushed Durabrass (23kt Gold)	34 459 979-28 0050
	Matte Black	34 459 979-33 0050
	Brushed Bronze	34 459 979-42 0050
	Brushed Champagne (22kt Gold)	34 459 979-46 0050
	Champagne (22kt Gold)	34 459 979-47 0050
	Brushed Chrome	34 459 979-93 0050
	Brushed Dark Platinum	34 459 979-99 0050

## Showerpipe with shower thermostat without hand shower - Brushed Dark Brass SERIES SPECIFIC

34 459 979 Product version from 7/1/2022

mm [inches]  
1:10



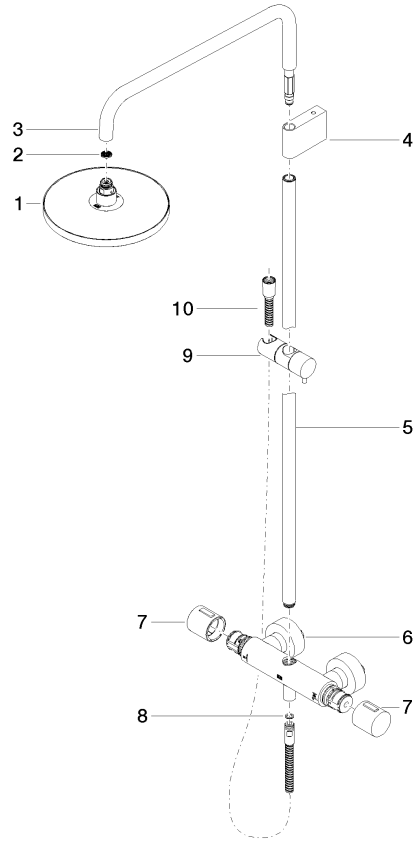
Flow rate chart



## Showerpipe with shower thermostat without hand shower - Brushed Dark Brass SERIES SPECIFIC

34 459 979 Product version from 7/1/2022

Parts for other  
finishes can be found  
here: [Chrome](#)



### Spare parts list

No.	Item Number	Name	Quantity used	Delivery time
	10 28 322 970-39	Metal shower hose 1/2" x 3/8" x 1750 mm - Brushed Dark Brass	1.00	30
	8 90 14 20 026 00 90	seal	1.00	2
	3 90 28 22 348 00-39	pipe	1.00	30
	5 90 28 22 349 00-39	pipe	1.00	30
	1 90 12 05 092 00-39	shower	1.00	-
Spare part can no longer be ordered, please order the replacement item				
	9 12 570 970-39	Slide unit - Brushed Dark Brass	1.00	60
	6 04 17 01 250 00-39	connection	1.00	60
	4 90 17 11 150 00-39	holder	1.00	30
	7 90 17 33 015 00-39	handle	2.00	30
	2 09 23 01 039 90	sieve	1.00	2