

Showerpipe with shower thermostat without hand shower - Matte Black

SERIES SPECIFIC

34 460 979 Product version from 7/1/2022



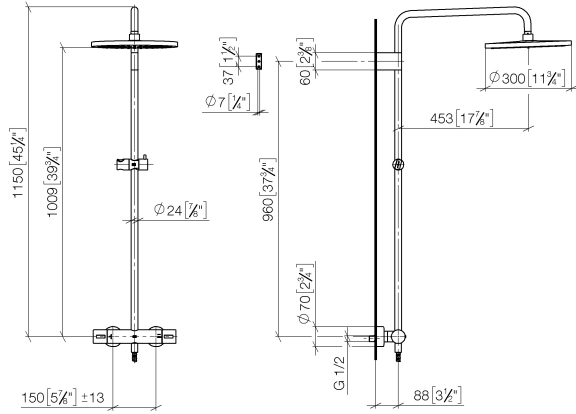
- shower with fixed riser projection 453mm
- overhead shower: rain flow
- rain shower Ø 300 mm
- rain shower with anti-scale system
- max. rainshower flow 14 l/min
- rotary diverter with volume control and shut-off function
- slide-on rosettes Ø 70 mm
- height of fittings up to rain shower (bottom edge) 1009mm
- height of fittings up to top edge of elbow 1150mm
- gauge 150 mm - 13 mm
- metal shower hose 1750mm with integrated anti-twist protection
- 1/2" connection
- slide bar
- Pipe diameter 23.5 mm
- quick clearing
- This product can help a building meet the requirements of Green Building Rating Systems, e.g. LEED®, BREEAM®, DGNB

Intrinsic protection against back flow.

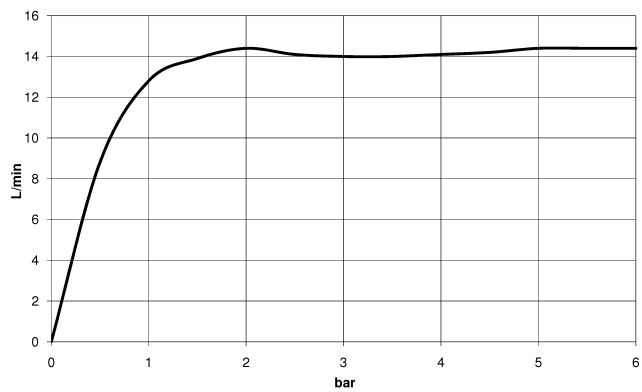
	Matte Black	34 460 979-33 0050
	Chrome	34 460 979-00 0050
	Brushed Platinum	34 460 979-06 0050
	Platinum	34 460 979-08 0050
	Dark Chrome	34 460 979-19 0050
	Light Gold	34 460 979-26 0050
	Brushed Light Gold	34 460 979-27 0050
	Brushed Durabronze (23kt Gold)	34 460 979-28 0050
	Brushed Dark Brass	34 460 979-39 0050
	Brushed Bronze	34 460 979-42 0050
	Brushed Champagne (22kt Gold)	34 460 979-46 0050
	Champagne (22kt Gold)	34 460 979-47 0050
	Brushed Chrome	34 460 979-93 0050
	Brushed Dark Platinum	34 460 979-99 0050

34 460 979 Product version from 7/1/2022

mm [inches]
1:10

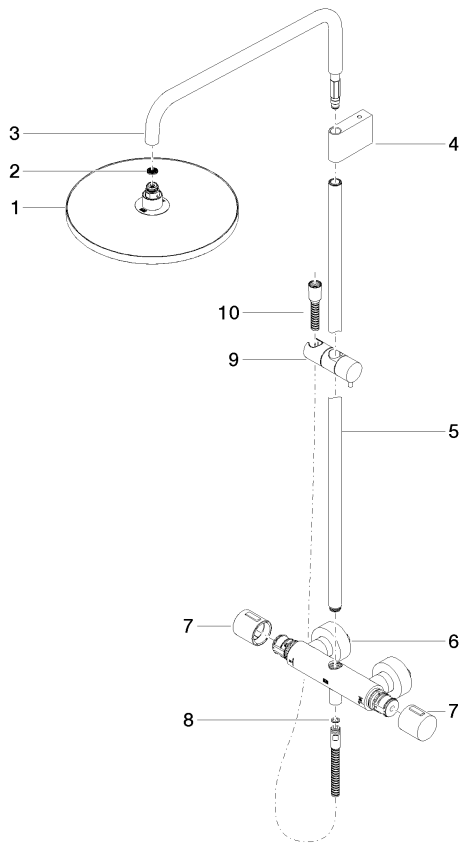


Flow rate chart



34 460 979 Product version from 7/1/2022

Parts for other
finishes can be found
here: [Chrome](#)



Spare parts list

No.	Item Number	Name	Quantity used	Delivery time
7	90 17 33 015 00-33	handle	2.00	30
10	28 322 970-33	Metal shower hose 1/2" x 3/8" x 1750 mm - Matte Black	1.00	2
3	90 28 22 348 00-33	pipe	1.00	30
6	04 17 01 250 00-33	connection	1.00	30
9	12 570 970-33	Slide unit - Matte Black	1.00	70
2	09 23 01 039 90	sieve	1.00	2
5	90 28 22 349 00-33	pipe	1.00	30
4	90 17 11 150 00-33	holder	1.00	30
8	90 14 20 026 00 90	seal	1.00	2
1	90 12 05 091 00-33	shower	1.00	30