

Concealed single-lever mixer with cover plate with integrated shower connection - Chrome

SERIES SPECIFIC

36 046 970	Product version from 4/1/2024		
	<ul style="list-style-type: none"> cover plate 80 x 80 mm Intrinsic protection against back flow.		
	Intrinsic protection against back flow.		
		<div> <div></div> <div>Chrome</div> <div>36 046 970-00</div> </div>	
		<div> <div></div> <div>Brushed Platinum</div> <div>36 046 970-06</div> </div>	
		<div> <div></div> <div>Platinum</div> <div>36 046 970-08</div> </div>	
		<div> <div></div> <div>Dark Chrome</div> <div>36 046 970-19</div> </div>	
		<div> <div></div> <div>Brushed Light Gold</div> <div>36 046 970-27</div> </div>	
		<div> <div></div> <div>Brushed Durabrass (23kt Gold)</div> <div>36 046 970-28</div> </div>	
		<div> <div></div> <div>Matte Black</div> <div>36 046 970-33</div> </div>	
		<div> <div></div> <div>Brushed Champagne (22kt Gold)</div> <div>36 046 970-46</div> </div>	
		<div> <div></div> <div>Champagne (22kt Gold)</div> <div>36 046 970-47</div> </div>	
		<div> <div></div> <div>Brushed Chrome</div> <div>36 046 970-93</div> </div>	
		<div> <div></div> <div>Brushed Dark Platinum</div> <div>36 046 970-99</div> </div>	

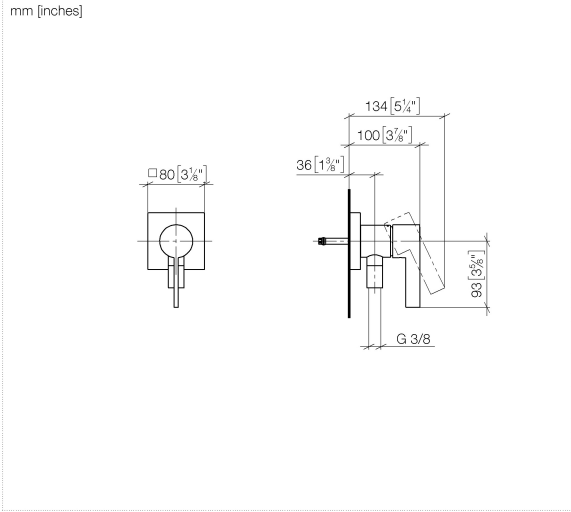
Required miscellaneous

	Concealed wall mounting -	35 050 970 90
	<ul style="list-style-type: none"> min. recess depth 80 mm max. recess depth 105 mm 	

Concealed single-lever mixer with cover plate with integrated shower connection - Chrome

SERIES SPECIFIC

36 046 970 Product version from 4/1/2024



Flow rate chart



Codes & Standards

DIN 4109

ISO 3822

Ü-Zeichen



Concealed single-lever mixer with cover plate with integrated shower connection - Chrome

SERIES SPECIFIC

36 046 970 Product version from 4/1/2024

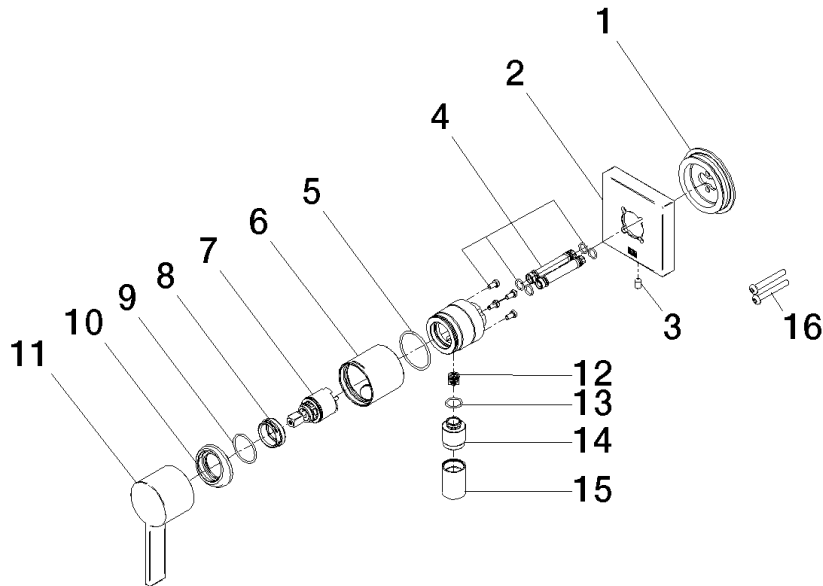
Certificates and sustainability

LGA_38

Concealed single-lever mixer with cover plate with integrated shower connection - Chrome

SERIES SPECIFIC

36 046 970 Product version from 4/1/2024



Spare parts list

No.	Item Number	Name	Quantity used	Delivery time
	4 90 24 01 046 00 90	connection	2.00	2
	15 90 21 02 069 00-00	cover	1.00	10
	8 09 24 04 266 90	nut	1.00	2
	9 09 14 10 120 90	seal	1.00	2
	5 09 14 10 111 90	seal	1.00	2
	3 09 31 11 144 90	pin	1.00	2
	12 09 23 01 131 90	back-flow preventer	1.00	2
	10 09 28 30 041-00	cover	1.00	10
	14 09 24 03 281-00	nipple	1.00	10
	7 90 15 05 044 00 90	cartridge	1.00	2
	1 90 30 11 232 00 90	disc	1.00	2
	2 90 27 97 046 00-00	rosette	1.00	10
	13 90 14 10 021 00 90	seal	1.00	2
	6 90 18 40 320 00-00	sleeve	1.00	10
	16 90 30 30 229 00 90	screw	2.00	2
	11 09 20 97 063-00	handle	1.00	10