

Concealed single-lever mixer with diverter - Brushed Light Gold

SERIES SPECIFIC

36 120 660 Product version from 2/20/2020



- automatic diverter
- cover plate Ø 150 mm
- WRAS

| | | |
|--|--------------------------------|---------------|
| | Brushed Light Gold | 36 120 660-27 |
| | Chrome | 36 120 660-00 |
| | Brushed Platinum | 36 120 660-06 |
| | Platinum | 36 120 660-08 |
| | Dark Chrome | 36 120 660-19 |
| | Light Gold | 36 120 660-26 |
| | Brushed Durabronze (23kt Gold) | 36 120 660-28 |
| | Matte Black | 36 120 660-33 |
| | Brushed Bronze | 36 120 660-42 |
| | Brushed Champagne (22kt Gold) | 36 120 660-46 |
| | Champagne (22kt Gold) | 36 120 660-47 |
| | Brushed Chrome | 36 120 660-93 |
| | Brushed Dark Platinum | 36 120 660-99 |

Required miscellaneous



Concealed single-lever mixer - 35 020 970 90
 • min. recess depth 80 mm
 • max. recess depth 105 mm

Recommended miscellaneous



xGRID Attachment set for integrating in the dry wall construction - 12 340 970 90

Required miscellaneous



Concealed single-lever mixer with backflow preventor - 35 021 970 90
 • min. recess depth 80 mm
 • max. recess depth 105 mm

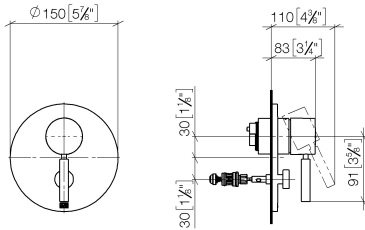
Required miscellaneous



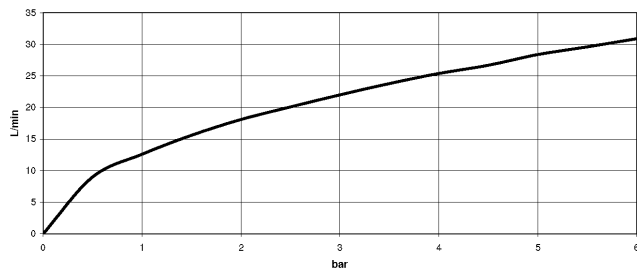
xGRID Installation track 555 mm - 12 360 970 90

36 120 660 Product version from 2/20/2020

mm [inches]



Flow rate chart



Codes & Standards

DIN 4109

ISO 3822

Scottish Water
Byelaws

UK Water Supply
Regulations

Ü-Zeichen



Concealed single-lever mixer with diverter - Brushed Light Gold

SERIES SPECIFIC

36 120 660 Product version from 2/20/2020

Certificates and sustainability

LGA_19

WRAS_2207

