








MADISON Concealed two-way diverter - Brushed Dark Brass

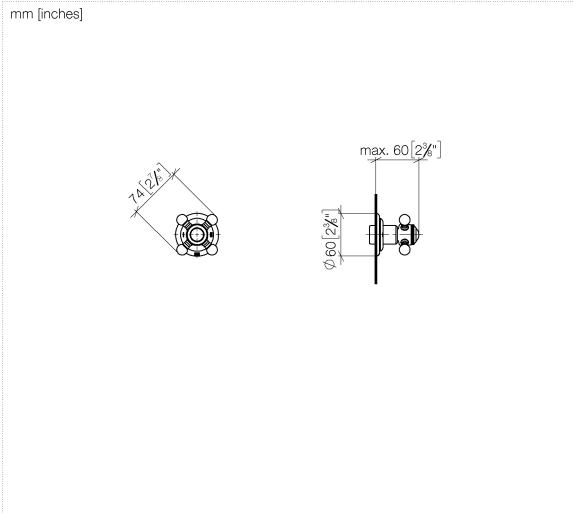
MADISON

36 200 361    Product version from 4/1/2022

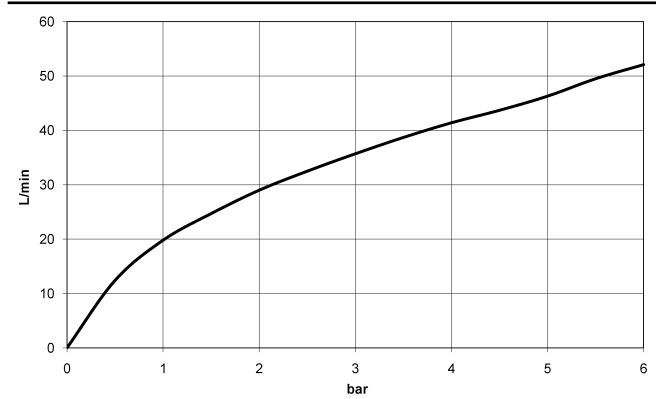


- rotary diverter
- rosette Ø 60 mm
- NEUTRAL porcelain insert
- WRAS

	Brushed Dark Brass	36 200 361-39
	Chrome	36 200 361-00
	Brushed Platinum	36 200 361-06
	Platinum	36 200 361-08
	Durabrass (23kt Gold)	36 200 361-09
	Brushed Durabrass (23kt Gold)	36 200 361-28
	Brushed Dark Platinum	36 200 361-99



Flow rate chart



Codes & Standards

DIN 4109	ISO 3822	Scottish Water Byelaws	UK Water Supply Regulations
----------	----------	------------------------	-----------------------------

Ü-Zeichen



## MADISON Concealed two-way diverter - Brushed Dark Brass

---

MADISON

36 200 361 Product version from 4/1/2022

Certificates and sustainability

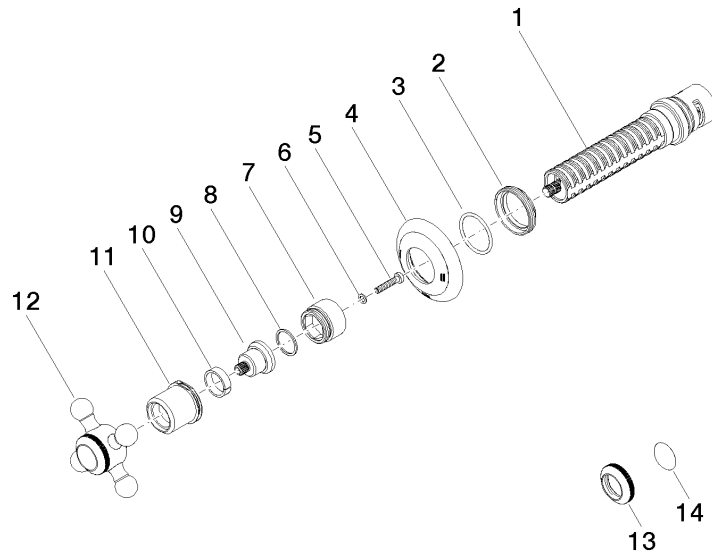
---

LGA\_38

WRAS\_2307

36 200 361 Product version from 4/1/2022

Parts for other  
finishes can be found  
here: [Chrome](#)



# MADISON Concealed two-way diverter - Brushed Dark Brass

MADISON

36 200 361 Product version from 4/1/2022

## Spare parts list

No.	Item Number	Name	Quantity used	Delivery time
1	90 90 03 304 10 90	diverter	1.00	2
9	09 12 12 064-39	base	1.00	-
Spare part can no longer be ordered, please order the replacement item				
8	90 28 10 030 00 90	ring	1.00	2
4	09 27 36 105-39	rosette	1.00	-
Spare part can no longer be ordered, please order the replacement item				
14	09 26 01 016 90	accessories	1.00	2
6	09 30 11 194 90	disc	1.00	2
11	09 21 02 161-39	cover	1.00	-
Spare part can no longer be ordered, please order the replacement item				
13	09 20 36 005-39	handle	1.00	-
Spare part can no longer be ordered, please order the replacement item				
5	90 30 30 075 00 90	screw	1.00	2
2	09 23 10 125-39	nut	1.00	-
Spare part can no longer be ordered, please order the replacement item				
3	90 14 10 063 00 90	seal	1.00	2
10	90 14 15 021 00 90	ring	1.00	2
12	04 20 36 100 02-39	handle	1.00	-
Spare part can no longer be ordered, please order the replacement item				
7	09 18 30 007-39	sleeve	1.00	-
Spare part can no longer be ordered, please order the replacement item				