


36 200 882



- rotary diverter
- rosette 60 mm
- WRAS 2307045

|  |                                     |               |
|--|-------------------------------------|---------------|
|   | Dark Chrome                         | 36 200 882-19 |
|   | Chrome                              | 36 200 882-00 |
|   | Brushed Platinum                    | 36 200 882-06 |
|   | Platinum                            | 36 200 882-08 |
|   | Brushed Durabrass<br>(23kt Gold)    | 36 200 882-28 |
|   | Matte Black                         | 36 200 882-33 |
|   | Brushed<br>Champagne (22kt<br>Gold) | 36 200 882-46 |
|   | Champagne (22kt<br>Gold)            | 36 200 882-47 |
|   | Brushed Chrome                      | 36 200 882-93 |
|  | Brushed Dark<br>Platinum            | 36 200 882-99 |

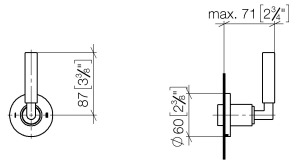
Required miscellaneous



- Concealed two-way diverter -** 35 202 970 90
- max. recess depth 160 mm
  - min. recess depth 85 mm

36 200 882

mm [inches]



### Flow rate chart

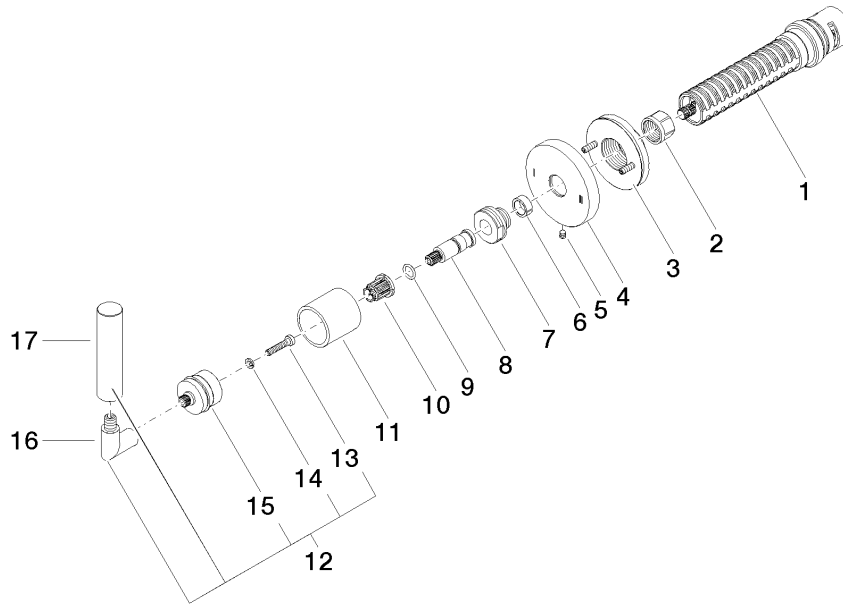


### Certificates

LGA\_38379.

WRAS\_2307045.

36 200 882



### Spare parts list

| No. | Item Number        | Name       | Quantity used | Delivery time |
|-----|--------------------|------------|---------------|---------------|
| 1   | 90 90 03 304 10 90 | diverter   | 1             | 2             |
| 2   | 90 23 30 023 00 90 | nut        | 1             | 2             |
| 3   | 90 21 02 181 00 90 | disc       | 1             | 2             |
| 4   | 09 27 89 118-19    | rosette    | 1             | 20            |
| 5   | 09 31 11 294 90    | pin        | 1             | 2             |
| 6   | 90 14 15 020 03 90 | ring       | 1             | 2             |
| 7   | 09 24 05 002 90    | nipple     | 1             | 2             |
| 8   | 09 29 06 022 90    | spindle    | 1             | 2             |
| 9   | 90 14 10 060 00 90 | seal       | 1             | 2             |
| 10  | 90 12 12 002 00 90 | fixing cap | 1             | 2             |
| 11  | 09 21 02 144-19    | sleeve     | 1             | 20            |
| 12  | 04 20 88 052 10-19 | handle     | 1             | 60            |
| 13  | 90 30 30 075 00 90 | screw      | 1             | 2             |
| 14  | 90 30 11 029 00 90 | disc       | 1             | 2             |
| 15  | 90 12 12 219 00-19 | base       | 1             | 20            |
| 16  | 04 18 20 022 00-19 | angle      | 1             | 60            |
| 17  | 09 20 88 052-19    | handle     | 1             | 20            |