

Concealed three-way diverter - Matte Black

SERIES SPECIFIC

36 210 740

Product version from 4/1/2022



- rotary diverter
- without rosette
- handle Ø 60mm
- WRAS

| | | |
|---|-------------------------------|---------------|
|  | Matte Black | 36 210 740-33 |
|  | Chrome | 36 210 740-00 |
|  | Brushed Platinum | 36 210 740-06 |
|  | Light Gold | 36 210 740-26 |
|  | Brushed Light Gold | 36 210 740-27 |
|  | Brushed Durabrass (23kt Gold) | 36 210 740-28 |
|  | Brushed Dark Brass | 36 210 740-39 |
|  | Brushed Bronze | 36 210 740-42 |
|  | Brushed Champagne (22kt Gold) | 36 210 740-46 |
|  | Champagne (22kt Gold) | 36 210 740-47 |
|  | Brushed Dark Platinum | 36 210 740-99 |

Required miscellaneous



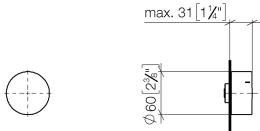
- Concealed three-way diverter -

35 203 970 90

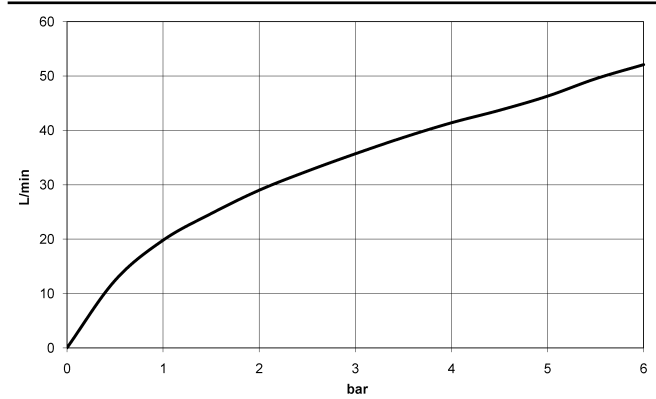
 - max. recess depth 160 mm
 - min. recess depth 85 mm

36 210 740
Product version from 4/1/2022

mm [inches]



Flow rate chart



Codes & Standards

| | | | |
|----------|----------|------------------------|-----------------------------|
| DIN 4109 | ISO 3822 | Scottish Water Byelaws | UK Water Supply Regulations |
|----------|----------|------------------------|-----------------------------|

Ü-Zeichen



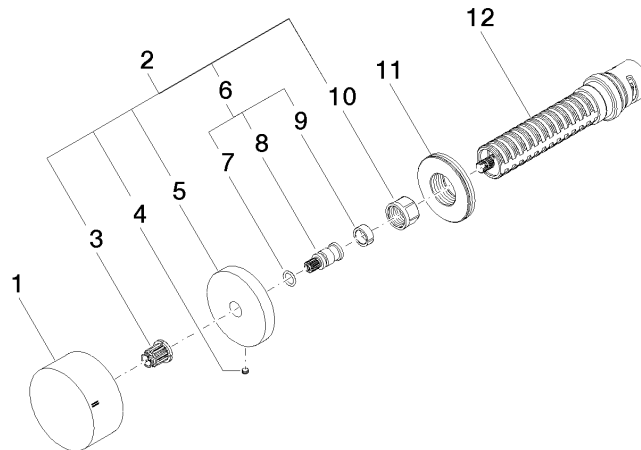
Concealed three-way diverter - Matte Black

SERIES SPECIFIC

36 210 740 Product version from 4/1/2022

Certificates and sustainability

LGA_38 WRAS_2307



Spare parts list

| No. | Item Number | Name | Quantity used | Delivery time |
|--|-----------------------|------------|---------------|---------------|
| | 4 09 31 11 055 90 | pin | 1.00 | 2 |
| | 1 09 20 74 045-33 | handle | 1.00 | 60 |
| | 5 09 27 74 004-33 | rosette | 1.00 | 30 |
| | 3 90 12 12 002 00 90 | fixing cap | 1.00 | 2 |
| | 6 04 29 06 020 00-00 | spindle | 1.00 | 10 |
| | 8 09 29 06 020-33 | spindle | 1.00 | - |
| Spare part can no longer be ordered, please order the replacement item | | | | |
| | 2 04 27 74 004 00-33 | rosette | 1.00 | 30 |
| | 12 90 90 03 303 10 90 | diverter | 1.00 | 2 |
| | 11 09 30 01 107 90 | sleeve | 1.00 | 2 |
| | 7 90 14 10 060 00 90 | seal | 1.00 | 2 |
| | 10 90 23 30 023 00 90 | nut | 1.00 | 2 |
| | 9 90 14 15 020 03 90 | ring | 1.00 | 2 |