

SYMETRICS Concealed three-way diverter - Brushed Durabrass (23kt Gold)

SYMETRICS

36 210 985


Product version from 4/1/2022



- rotary diverter
- rosette 60 x 60 mm
- WRAS

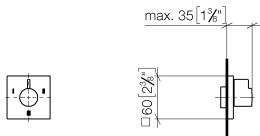
	Brushed Durabrass (23kt Gold)	36 210 985-28
	Chrome	36 210 985-00
	Brushed Platinum	36 210 985-06
	Brushed Light Gold	36 210 985-27
	Brushed Champagne (22kt Gold)	36 210 985-46
	Champagne (22kt Gold)	36 210 985-47
	Brushed Dark Platinum	36 210 985-99

Required miscellaneous

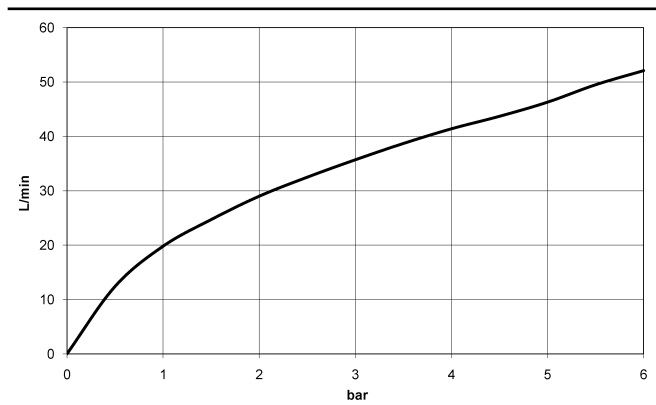
	<div> <div>Concealed three-way diverter -</div> <div> <div>•max. recess depth 160 mm</div> <div>•min. recess depth 85 mm</div> </div> </div> <div>35 203 970 90</div>
---	---

36 210 985 Product version from 4/1/2022

mm [inches]



Flow rate chart



Codes & Standards

DIN 4109	ISO 3822	Scottish Water Byelaws	UK Water Supply Regulations
----------	----------	---------------------------	--------------------------------

Ü-Zeichen



SYMETRICS Concealed three-way diverter - Brushed Durabronz (23kt Gold)

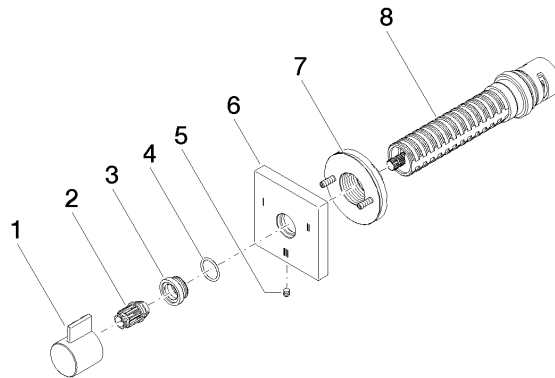
SYMETRICS

36 210 985 Product version from 4/1/2022

Certificates and sustainability

LGA_38

WRAS_2307



Spare parts list

No.	Item Number	Name	Quantity used	Delivery time
3	09 12 12 043-28	base	1.00	20
5	09 31 11 294 90	pin	1.00	2
1	09 20 98 002-28	handle	1.00	20
7	90 21 02 181 00 90	disc	1.00	2
6	09 27 98 038-28	rosette	1.00	60
4	09 14 10 017 90	seal	1.00	2
8	90 90 03 303 10 90	diverter	1.00	2
2	09 12 12 005 90	fixing cap	1.00	2