

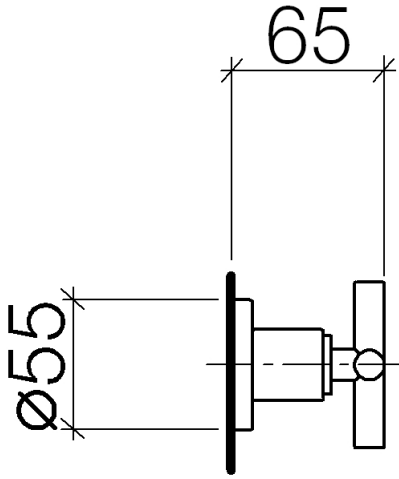
36 310 892

- rosette Ø 55 mm



Matte White	36 310 892-10
Chrome	36 310 892-00
Brushed Platinum	36 310 892-06
Platinum	36 310 892-08
Durabronz (23kt Gold)	36 310 892-09
Matte Black	36 310 892-33
Brushed Chrome	36 310 892-93
Brushed Dark Platinum	36 310 892-99

36 310 892



Codes & Standards

ASME A112.18.1

cUPC

Certificates

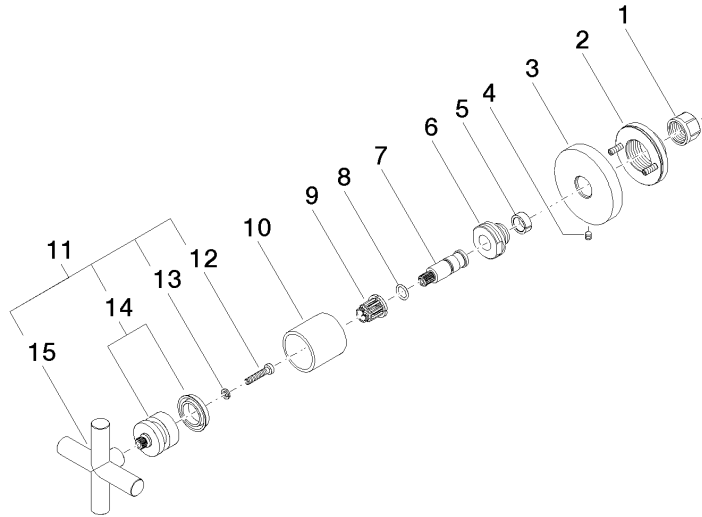
IAPMO\_4976

36 310 892

Product version up to 10/14/2020

**Product version from 10/14/2020**

Parts for other  
finishes can be found  
here: [Chrome](#)





# TARA Wall valve - Matte White

TARA

36 310 892

## Spare parts list

Product version up to 10/14/2020

### Product version from 10/14/2020

No.	Item Number	Name	Quantity used	Delivery time
	90 23 30 023 00 90	nut	15	2