

**Concealed thermostat with one function volume control - Brushed Champagne (22kt Gold)**

META

36 425 970



- cover plate Ø 150 mm
- temperature control handle with safety limit stop at 38°C
- hot water temperature limiter, can be preset
- WRAS 1906098

|  |                               |               |
|--|-------------------------------|---------------|
|  | Brushed Champagne (22kt Gold) | 36 425 970-46 |
|  | Chrome                        | 36 425 970-00 |
|  | Brushed Platinum              | 36 425 970-06 |
|  | Platinum                      | 36 425 970-08 |
|  | Dark Chrome                   | 36 425 970-19 |
|  | Light Gold                    | 36 425 970-26 |
|  | Brushed Light Gold            | 36 425 970-27 |
|  | Brushed Durabrass (23kt Gold) | 36 425 970-28 |
|  | Matte Black                   | 36 425 970-33 |
|  | Brushed Bronze                | 36 425 970-42 |
|  | Champagne (22kt Gold)         | 36 425 970-47 |
|  | Brushed Chrome                | 36 425 970-93 |
|  | Brushed Dark Platinum         | 36 425 970-99 |

**Required miscellaneous**



**Concealed thermostat -** 35 425 970 90  
 •max. recess depth 136 mm  
 •min. recess depth 80 mm

**Required miscellaneous**



**Concealed thermostat with built-in isolators -** 35 426 970 90  
 •max. recess depth 136 mm  
 •min. recess depth 80 mm

**Recommended miscellaneous**



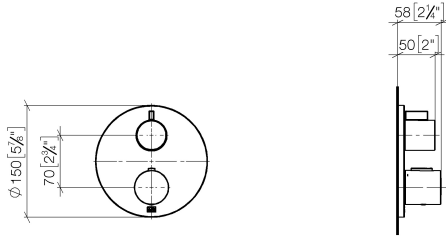
**xGRID Attachment set for integrating in the dry wall construction -** 12 340 970 90

**Required miscellaneous**

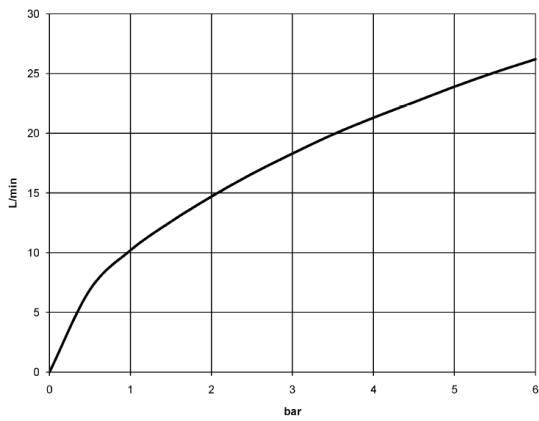


**xGRID Installation track 555 mm -** 12 360 970 90

36 425 970  
mm [inches]



Flow rate chart



Certificates

LGA\_19385.

DVGW\_DW-  
6512DN0119.

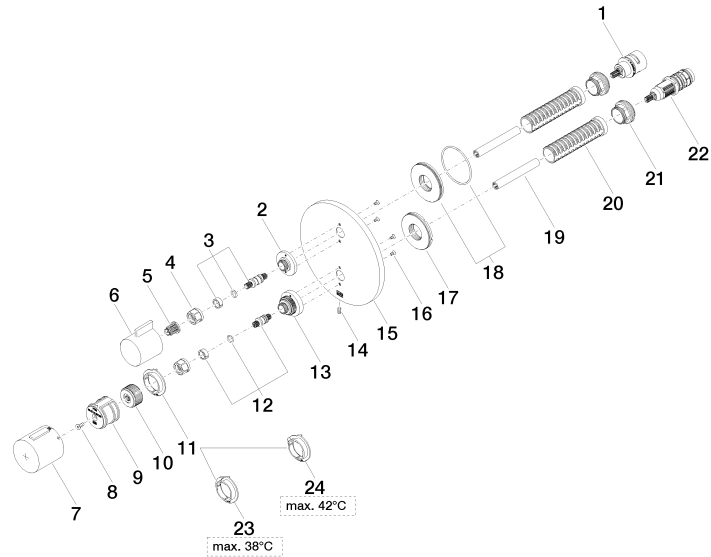
LGA\_19384.

WRAS\_1906098.

Concealed thermostat with one function volume control - Brushed Champagne  
(22kt Gold)

META

36 425 970





## Concealed thermostat with one function volume control - Brushed Champagne (22kt Gold)

META

36 425 970

### Spare parts list

| No. | Item Number        | Name       | Quantity used | Delivery time |
|-----|--------------------|------------|---------------|---------------|
| 1   | 90 90 03 166 00 90 | top        | 1             | 2             |
| 2   | 09 12 12 053-46    | base       | 1             | 60            |
| 3   | 04 29 06 111 01-00 | spindle    | 1             | 10            |
| 4   | 90 23 30 023 00 90 | nut        | 2             | 2             |
| 5   | 90 12 12 002 00 90 | fixing cap | 1             | 2             |
| 6   | 09 20 67 006-46    | handle     | 1             | 30            |
| 7   | 90 17 33 017 00-46 | handle     | 1             | 30            |
| 8   | 90 30 30 124 00 90 | screw      | 1             | 2             |
| 9   | 90 12 12 052 00 90 | base       | 1             | 2             |
| 10  | 09 12 12 054 90    | base       | 1             | 2             |
| 11  | 09 28 10 187 90    | regulator  | 1             | 2             |
| 12  | 04 29 06 024 01-00 | spindle    | 1             | 10            |
| 13  | 09 12 12 051-46    | base       | 1             | 60            |
| 14  | 09 31 11 134 90    | pin        | 1             | 2             |
| 15  | 09 11 02 242-46    | plate      | 1             | 60            |
| 16  | 09 30 30 157 90    | screw      | 4             | 2             |
| 17  | 09 30 01 296 90    | disc       | 1             | 2             |
| 18  | 90 30 01 190 00 90 | disc       | 1             | 2             |
| 19  | 90 23 01 124 00 90 | sleeve     | 2             | 2             |
| 20  | 90 18 40 077 01 90 | spindle    | 2             | 2             |
| 21  | 09 24 04 257 90    | nut        | 2             | 2             |
| 22  | 90 15 02 013 00 90 | cartridge  | 1             | 2             |
| 23  | 09 28 10 188 90    | regulator  | 1             | 2             |
| 24  | 09 28 10 189 90    | regulator  | 1             | 2             |