

xTOOL Concealed thermostat without volume control 1/2" - Brushed Dark Platinum

SERIES SPECIFIC

36 501 985 Product version up to 2/2/2021



- cover plate 120 x 120 mm
- temperature control handle with safety limit stop at 38°C
- thermostat cartridge
- WRAS

	Brushed Dark Platinum	36 501 985-99
	Chrome	36 501 985-00
	Brushed Platinum	36 501 985-06
	Platinum	36 501 985-08
	Dark Chrome	36 501 985-19
	Brushed Light Gold	36 501 985-27
	Brushed Durabronze (23kt Gold)	36 501 985-28
	Matte Black	36 501 985-33
	Brushed Champagne (22kt Gold)	36 501 985-46
	Champagne (22kt Gold)	36 501 985-47
	Brushed Chrome	36 501 985-93

Required miscellaneous



xTOOL Concealed thermostat module without volume control - 35 503 970 90

- max. recess depth 160 mm
- min. recess depth 95 mm

Recommended miscellaneous



xGRID Attachment set for integrating in the dry wall construction - 12 340 970 90

Required miscellaneous

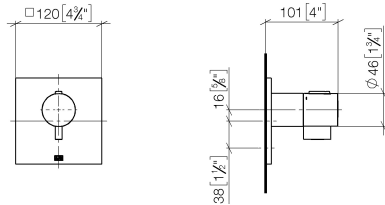


xGRID Installation track 555 mm - 12 360 970 90

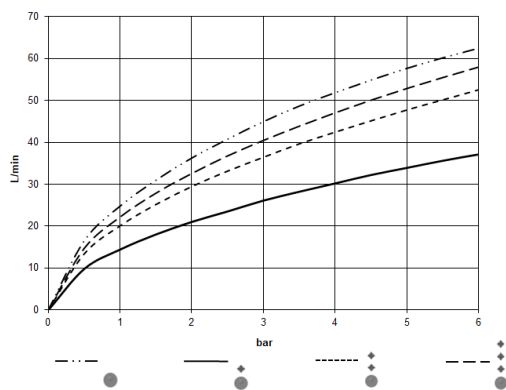
xTOOL Concealed thermostat without volume control 1/2" - Brushed Dark Platinum

SERIES SPECIFIC

36 501 985 Product version up to 2/2/2021
mm [inches]



Flow rate chart



Codes & Standards

DIN 4109

EN 1111

ISO 3822

Scottish Water
Byelaws

UK Water Supply
Regulations

Ü-Zeichen



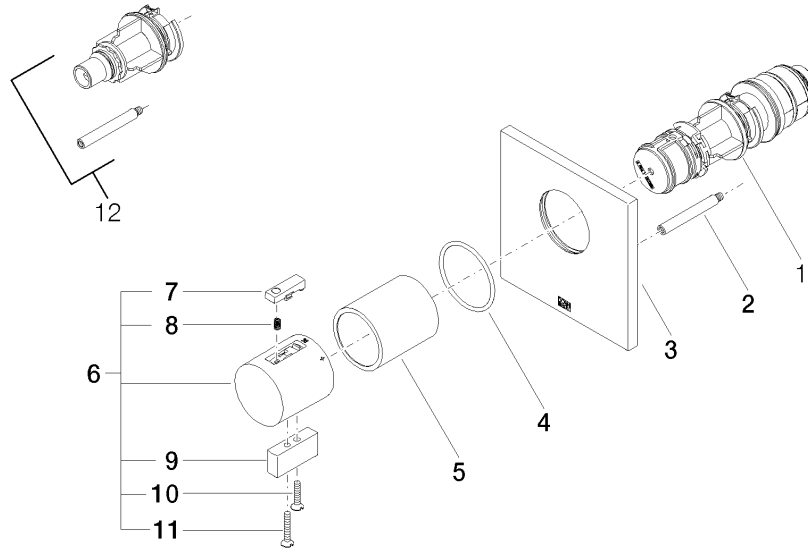
xTOOL Concealed thermostat without volume control 1/2" - Brushed Dark
Platinum

SERIES SPECIFIC

36 501 985 Product version up to 2/2/2021

Certificates and sustainability

WRAS_2011	DVGW_DW- 6512DN0	LGA_29	LGA_29
-----------	---------------------	--------	--------



Spare parts list

No.	Item Number	Name	Quantity used	Delivery time
12	12 178 970 90	Extension 46 mm -	1.00	2
3	09 11 02 196-99	cover	1.00	60
10	09 30 30 159-99	screw	1.00	20
6	04 17 33 006 00-99	handle	1.00	60
8	90 16 02 027 00 90	spring	1.00	2
11	09 30 30 160-99	screw	1.00	20
9	09 20 33 006-99	handle	1.00	20
4	90 14 10 049 00 90	seal	1.00	2
2	90 31 09 095 00 90	bar	1.00	2
5	90 21 02 112 00-99	sleeve	1.00	20
7	90 21 33 011 00-13	handle	1.00	2
1	90 15 02 065 00 90	cartridge	1.00	2