

VAIA Wall valve clockwise closing 1/2" - Platinum
VAIA


36 607 809



- rosette Ø 60 mm
- head part with cut-to-length spindle and sleeve
- WRAS

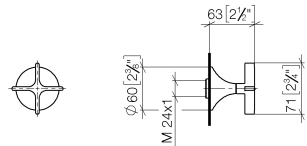
	Platinum	36 607 809-08
	Chrome	36 607 809-00
	Brushed Platinum	36 607 809-06
	Dark Chrome	36 607 809-19
	Brushed Durabrass (23kt Gold)	36 607 809-28
	Brushed Bronze	36 607 809-42
	Brushed Champagne (22kt Gold)	36 607 809-46
	Champagne (22kt Gold)	36 607 809-47
	Brushed Dark Platinum	36 607 809-99

Required miscellaneous

	Wall valve 1/2" -	35 607 970 90
	<ul style="list-style-type: none"> • max. recess depth 145 mm • min. recess depth 75 mm 	

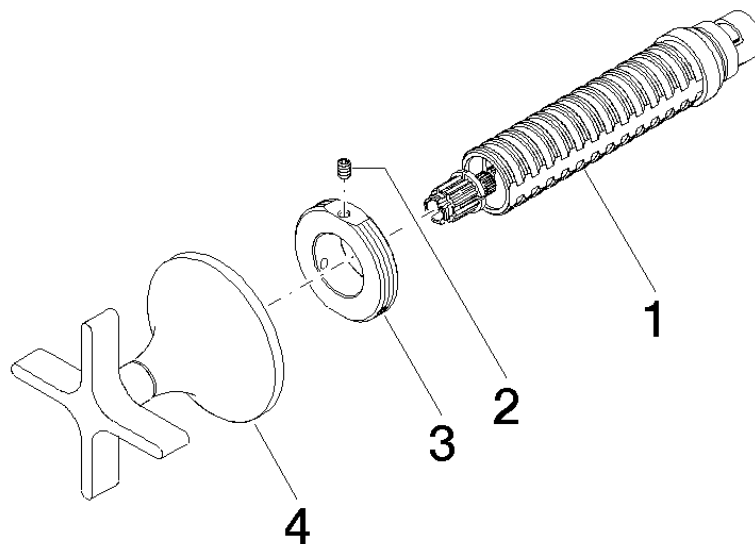
36 607 809

mm [inches]



Codes & Standards			
ASME A112.18.1	cUPC	DIN 4109	EN 1111
EN 200	ISO 3822	Scottish Water Byelaws	UK Water Supply Regulations
Ü-Zeichen			

Certificates and sustainability				
DVGW_DW-6501DN0	WRAS_2011	LGA_29	WRAS_2010	DVGW_DW-6512DN0
LGA_29	IAPMO_4976 (



Spare parts list

No.	Item Number	Name	Quantity used	Delivery time
3	09 21 02 163 90	disc	1.00	2
4	90 20 80 014 00-08	handle	1.00	-
Spare part can no longer be ordered, please order the replacement item				
1	90 90 03 143 00 90	top	1.00	2
2	09 31 11 008 90	pin	1.00	2