


SYMETRICS Wall valve anti-clockwise closing 1/2" - Platinum

SYMETRICS


36 607 985 Product version from 6/1/2024



- rosette 60 x 60 mm
- head part with cut-to-length spindle and sleeve
- WRAS

	Platinum	36 607 985-08
	Chrome	36 607 985-00
	Brushed Platinum	36 607 985-06
	Dark Chrome	36 607 985-19
	Brushed Light Gold	36 607 985-27
	Brushed Durabronze (23kt Gold)	36 607 985-28
	Brushed Chrome	36 607 985-93
	Brushed Dark Platinum	36 607 985-99

Required miscellaneous

- | | | |
|--|---|---------------|
|  | Wall valve 1/2" -
• max. recess depth 145 mm
• min. recess depth 75 mm | 35 607 970 90 |
|--|---|---------------|



SYMETRICS Wall valve anti-clockwise closing 1/2" - Platinum

SYMETRICS

36 607 985 Product version from 6/1/2024

mm [inches]



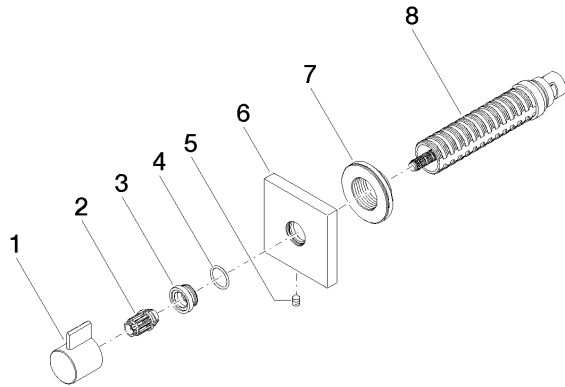
Codes & Standards

ASME A112.18.1	cUPC	DIN 4109	EN 1111
EN 200	ISO 3822	Scottish Water Byelaws	UK Water Supply Regulations

Ü-Zeichen

Certificates and sustainability

DVGW_DW-6501DN0	WRAS_2011	LGA_29	WRAS_2010	DVGW_DW-6512DN0
LGA_29	IAPMO_4976 (



Spare parts list

No.	Item Number	Name	Quantity used	Delivery time
	7 09 21 02 151 90	sleeve	1.00	2
	4 09 14 10 017 90	seal	1.00	2
	6 09 27 98 014-08	rosette	1.00	40
	8 90 90 03 202 00 90	top	1.00	2
	3 09 12 12 043-08	base	1.00	40
	2 09 12 12 005 90	fixing cap	1.00	2
	1 09 20 98 002-08	handle	1.00	40
	5 90 31 11 004 00 90	pin	1.00	2