


MEM Wall-mounted single-lever basin mixer without pop-up waste - Dark Chrome


MEM

36 860 782	<div>  <ul style="list-style-type: none"> • 177mm projection • fixed spout • rectangular, air-enriched flow • hole diameter spout 37 mm • hole diameter single-lever mixer 57 mm • rosette for spout 80 x 60mm • rosette for mixer 80 x 80mm • max. flow 5.7 l/min • lead-free • This product can help a building meet the requirements of Green Building Rating Systems, e.g. LEED®, BREEAM®, DGNB • WRAS </div>	<table> <tr> <td></td> <td>Dark Chrome</td> <td>36 860 782-19</td> </tr> <tr> <td></td> <td>Chrome</td> <td>36 860 782-00</td> </tr> <tr> <td></td> <td>Brushed Platinum</td> <td>36 860 782-06</td> </tr> <tr> <td></td> <td>Platinum</td> <td>36 860 782-08</td> </tr> <tr> <td></td> <td>Brushed Durabrass (23kt Gold)</td> <td>36 860 782-28</td> </tr> <tr> <td></td> <td>Brushed Dark Brass</td> <td>36 860 782-39</td> </tr> <tr> <td></td> <td>Brushed Champagne (22kt Gold)</td> <td>36 860 782-46</td> </tr> <tr> <td></td> <td>Champagne (22kt Gold)</td> <td>36 860 782-47</td> </tr> <tr> <td></td> <td>Brushed Dark Platinum</td> <td>36 860 782-99</td> </tr> </table>		Dark Chrome	36 860 782-19		Chrome	36 860 782-00		Brushed Platinum	36 860 782-06		Platinum	36 860 782-08		Brushed Durabrass (23kt Gold)	36 860 782-28		Brushed Dark Brass	36 860 782-39		Brushed Champagne (22kt Gold)	36 860 782-46		Champagne (22kt Gold)	36 860 782-47		Brushed Dark Platinum	36 860 782-99
	Dark Chrome	36 860 782-19																											
	Chrome	36 860 782-00																											
	Brushed Platinum	36 860 782-06																											
	Platinum	36 860 782-08																											
	Brushed Durabrass (23kt Gold)	36 860 782-28																											
	Brushed Dark Brass	36 860 782-39																											
	Brushed Champagne (22kt Gold)	36 860 782-46																											
	Champagne (22kt Gold)	36 860 782-47																											
	Brushed Dark Platinum	36 860 782-99																											

Required miscellaneous

<div>  <div> Concealed wall-mounted single-lever mixer - <div> <div>35 860 970 90</div> <ul style="list-style-type: none"> •min. recess depth 80 mm •max. recess depth 95 mm •mixer can be placed above, to the left or to the right of the spout. </div> </div> </div>
--

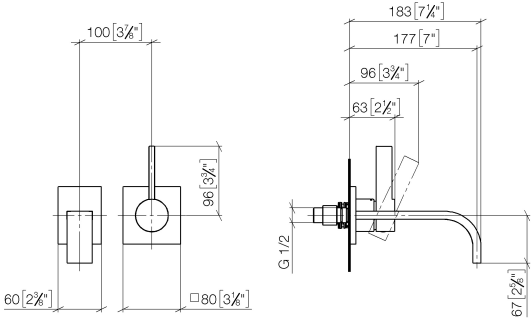
Required miscellaneous

<div>  <div> Concealed wall-mounted single-lever mixer mixer on right - <div> <div>35 816 970 90</div> <ul style="list-style-type: none"> •NOTE:Not suitable for concealed installation.Connection by means of angle valves, mounted with screws to back wall. </div> </div> </div>
--

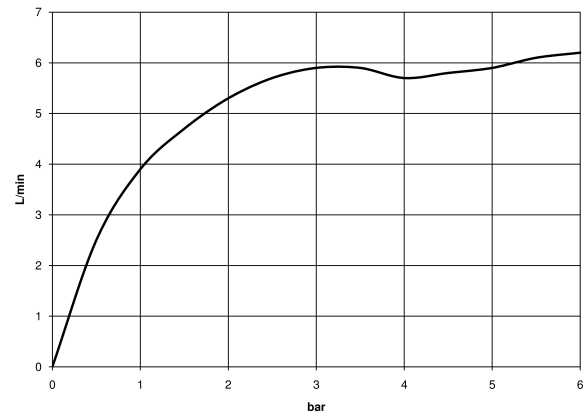
MEM Wall-mounted single-lever basin mixer without pop-up waste - Dark Chrome

MEM

36 860 782
mm [inches]



Flow rate chart



Codes & Standards

DIN 4109	EN 817	ISO 3822	Scottish Water Byelaws
UK Water Supply Regulations	Ü-Zeichen		



MEM Wall-mounted single-lever basin mixer without pop-up waste - Dark Chrome

MEM

36 860 782

Certificates and sustainability

LGA_29	DVGW_DW-6512DN0	WRAS_2107
--------	-----------------	-----------

MEM Wall-mounted single-lever basin mixer without pop-up waste - Dark Chrome

MEM

36 860 782

