

SERENITY SKY Rain panel for recessed ceiling installation with light - Dark Chrome

SERIES-VARIOUS

41 771 979
Product version from 9/1/2024



- exposed trim parts
- Rain panel with 2 different spray modes
- PURIFY RAIN, 175 x 175 mm, max. flow rate 10 l/min (at 3 bar)
- FULL RAIN, 455 x 315 mm, max. flow rate 14 l/min (at 3 bar)
- Rain panel, 600 x 420 mm
- min. recess depth 150 mm
- weight 15kg
- feed pipe (hot/cold): 2x DN 20
- with anti-scale system
- Recommended control element: xTool

Ceiling module power supply

- 24V DC (CV)

Ambient lighting

- LED coloured light RGBW
- Bulbs protected against splashing water

Activation

- ZigBee Light Link RGBW controller
- Provided by customer: Zigbee gateway

Environment

- Not suitable for outdoor use.
- Not suitable for use in a steam room.
- Not suitable for use in chlorinated or salty environments.
- Comply with the protection zone regulations as defined in DIN VDE 0100, Part 701 (IEC 60364-7-701).
- Dornbracht recommends consulting a systems integrator.

	Dark Chrome	41 771 979-19 0050
	Chrome	41 771 979-00 0050
	Brushed Bronze	41 771 979-42 0050
	Brushed Champagne (22kt Gold)	41 771 979-46 0050
	Champagne (22kt Gold)	41 771 979-47 0050
	Brushed Stainless Steel	41 771 979-86 0050
	Brushed Dark Platinum	41 771 979-99 0050

Required miscellaneous



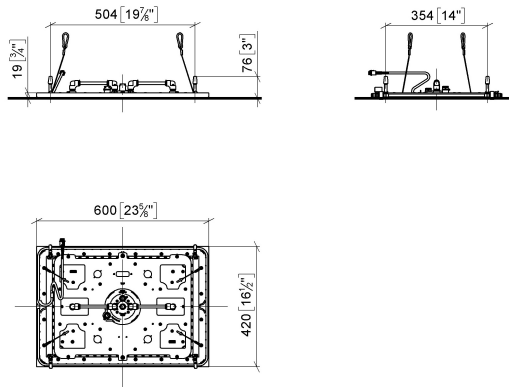
SERENITY SKY Concealed ceiling installation box with light -

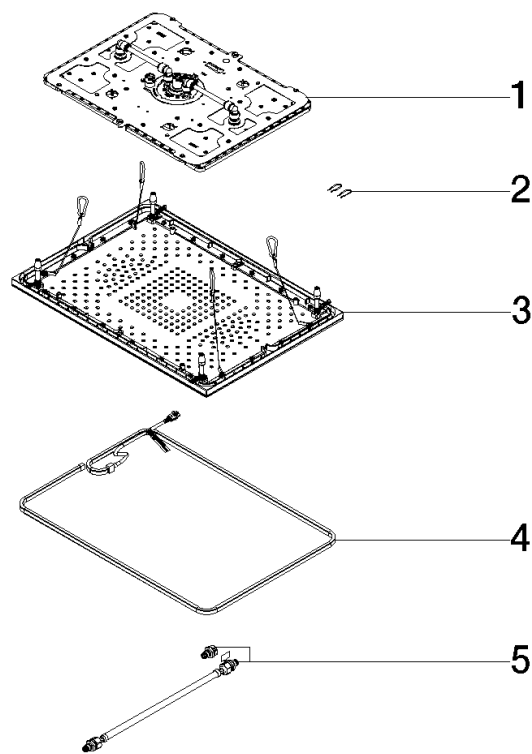
- 35 771 970 90
- concealed rough parts
  - flush-mounted reflection box, 662 x 482 mm, RAL 9003, Signal White
  - 2x female thread 1/2" connections
  - min. recess depth 150 mm
  - weight 15kg
  - Supply pipe 7 m
  - Input 100-240V AC 50-60Hz
  - Output 24V DC SELV / Class 2
  - ZigBee Light Link RGBW controller
  - Provided by customer: Zigbee gateway

# SERENITY SKY Rain panel for recessed ceiling installation with light - Dark Chrome

SERIES-VARIOUS

41 771 979 Product version from 9/1/2024  
mm [inches]  
1:10





Spare parts list

No.	Item Number	Name	Quantity used	Delivery time
5	90 30 04 033 00 90	hose	1.00	2
1	90 12 01 095 02 90	shower	1.00	2
4	90 10 01 263 00 90	electronic accessories	1.00	2
3	90 12 05 106 00-19	cover	1.00	20
2	91 16 02 053 00 90	holder	1.00	2