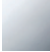

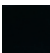


ST 050 406 5845









	Chrome	ST 050 406 5845-00 0050
	Brushed Platinum	ST 050 406 5845-06 0050
	Matte Black	ST 050 406 5845-33 0050

Fits: IMO, LULU, MADISON, MEM, TARA,
CL.1, LISSÉ, VAIA, META, CYO

Individual components of this set

You need the following components for this set

	1x	35 020 970 90		1x	35 085 970 90
	1x	12 380 970 90		1x	36 120 660-00
	1x	28 505 979-00 0050		1x	27 803 660-00 0050



Headshower solution - Chrome

IMO

ST 050 406 5845

ST 050 406 5845



- lead-free, dezincification resistant
- 2x back flow preventer
- 3x outlet G 1/2"
- 2x female thread 1/2" connections
- 2x integrated supply stop
- dust cover
- anti-water packing
- sound and thermal insulation
- gauge 60 mm
- WRAS 2207012

Recommended miscellaneous

Extension 25 mm -

12 191 970 90



Recommended miscellaneous

Extension 25 mm -

12 190 970 90



Recommended miscellaneous

**xGRID Attachment set for
integrating in the dry wall
construction -**

12 340 970 90



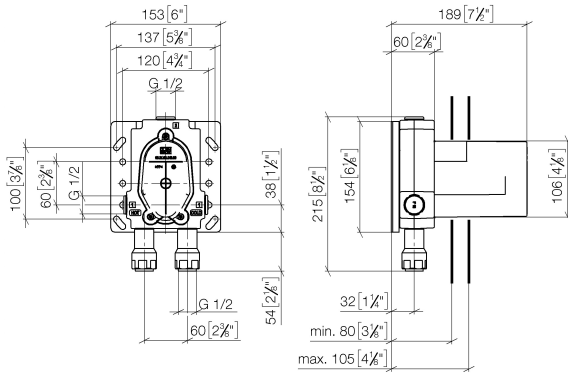
Required miscellaneous

xGRID Installation track 555 mm - 12 360 970 90

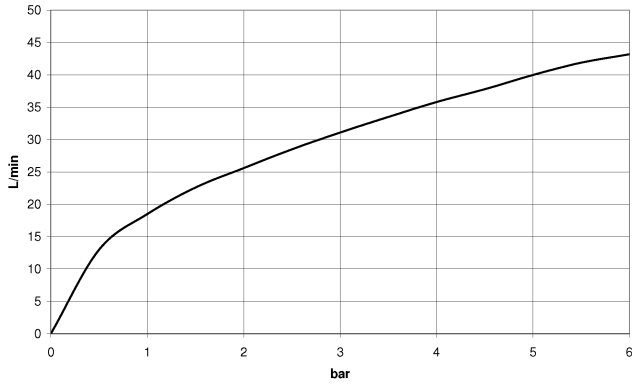


ST 050 406 5845

mm [inches]



Flow rate chart



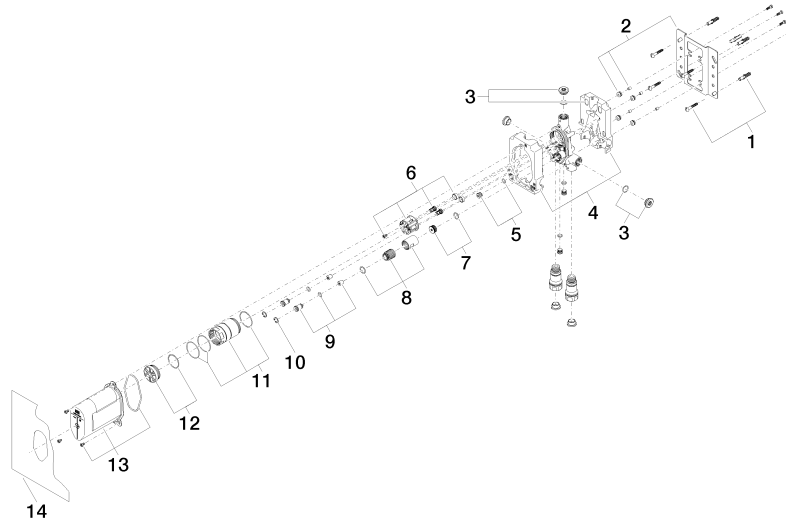
Certificates

DVGW_DW-
6512DN0126.

LGA_19863.

WRAS_2207012.

ST 050 406 5845



Spare parts list

No.	Item Number	Name	Quantity used	Delivery time
1	04 30 31 024 01 90	fixing set	2	2
2	04 17 20 128 00 90	holder	1	2
3	04 31 20 006 00 90	plug	2	2
4	09 11 11 058 90	accessories	1	2
5	04 31 20 039 11 90	plug	1	2
6	90 18 40 151 00 90	insert	1	2
7	90 31 20 098 00 90	plug	1	2
8	90 17 01 189 00 90	sleeve	1	2
9	04 24 03 223 00 90	insert	2	2
10	09 16 01 014 90	ring	2	2
11	90 17 01 187 00 90	sleeve	1	2
12	04 31 20 100 00 90	plug	1	2
13	90 21 02 148 00 90	cap	1	2
14	04 14 03 155 00 90	gasket kit	1	2

ST 050 406 5845



- red brass, lead-free
- female thread 1/2" connection
- 1x female thread 1/2" outlet
- dust cover
- anti-water packing
- soundproofing
- WRAS 240502014, 1904021

For wall-mounted spouts and wall outlet elbows with 1/2" connection.



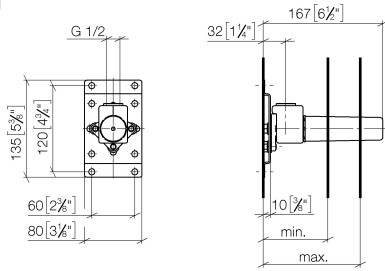
Headshower solution - Chrome

IMO

ST 050 406 5845

ST 050 406 5845

mm [inches]

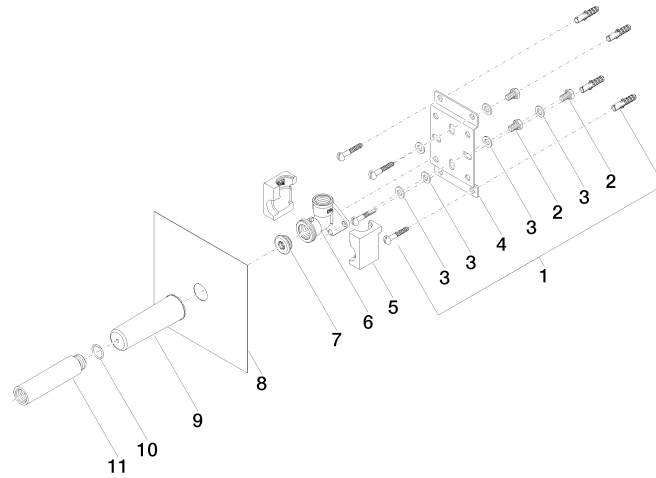


	min	max
CL_1	90 [3 1/2"]	163 [6 3/8"]
CL_2	68 [2 5/8"]	135 [5 3/8"]
Domicil	90 [3 1/2"]	163 [6 3/8"]
Gentle	90 [3 1/2"]	163 [6 3/8"]
IMO	90 [3 1/2"]	163 [6 3/8"]
Lissé	90 [3 1/2"]	163 [6 3/8"]
MEM	90 [3 1/2"]	163 [6 3/8"]
Symetrics	90 [3 1/2"]	163 [6 3/8"]
Vaia	90 [3 1/2"]	163 [6 3/8"]

Certificates

LGA_29336.

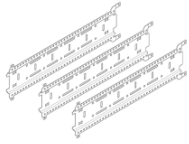
WRAS_240502014.



Spare parts list

No.	Item Number	Name	Quantity used	Delivery time
1	04 30 31 024 01 90	fixing set	2	2
2	09 30 30 152 90	screw	3	2
3	09 30 11 139 90	disc	6	2
4	09 17 20 094 90	holder	1	2
5	09 11 11 036 90	accessories	1	2
6	09 11 03 041 10 90	connection	1	2
7	04 31 20 006 00 90	plug	1	2
8	04 14 03 072 01 90	gasket kit	1	2
9	09 21 02 102 90	cap	1	2
10	90 14 10 010 00 90	seal	1	2
11	09 24 03 169 10 90	adaptor	1	2

ST 050 406 5845

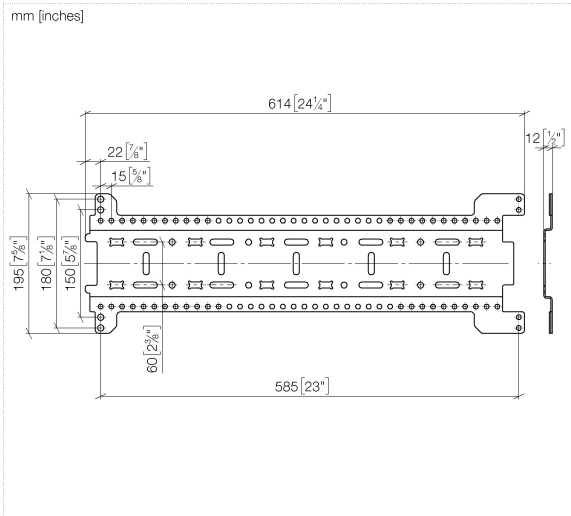


- width 555mm
- height 135 mm
- depth 12 mm
- retaining screws and plugs

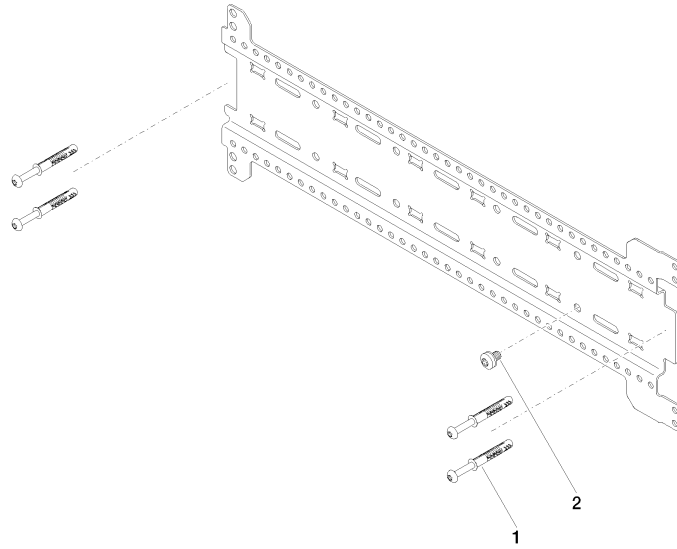
This set contains 3 xGrid installation tracks and includes fixing material

More about the xGRID installation track can be found in the Shower Book brochure

ST 050 406 5845



ST 050 406 5845



Spare parts list

No.	Item Number	Name	Quantity used	Delivery time
1	04 30 31 054 00 90	fixing set	6	2
2	04 30 30 212 00 90	fixing set	3	60

ST 050 406 5845



- automatic diverter
- cover plate Ø 150 mm
- WRAS 2207012

Fits: TARA, META

	Chrome	36 120 660-00
	Brushed Platinum	36 120 660-06
	Platinum	36 120 660-08
	Dark Chrome	36 120 660-19
	Light Gold	36 120 660-26
	Brushed Light Gold	36 120 660-27
	Brushed Durabronze (23kt Gold)	36 120 660-28
	Matte Black	36 120 660-33
	Brushed Bronze	36 120 660-42
	Brushed Champagne (22kt Gold)	36 120 660-46
	Champagne (22kt Gold)	36 120 660-47
	Brushed Chrome	36 120 660-93
	Brushed Dark Platinum	36 120 660-99

Required miscellaneous



Concealed single-lever mixer with backflow preventor - 35 021 970 90
 • max. recess depth 105 mm
 • min. recess depth 80 mm

Required miscellaneous



Concealed single-lever mixer - 35 020 970 90
 • max. recess depth 105 mm
 • min. recess depth 80 mm

Recommended miscellaneous



xGRID Attachment set for integrating in the dry wall construction - 12 340 970 90

Required miscellaneous



xGRID Installation track 555 mm - 12 360 970 90



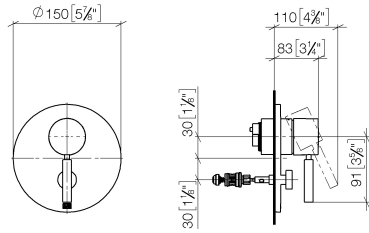
Headshower solution - Chrome

IMO

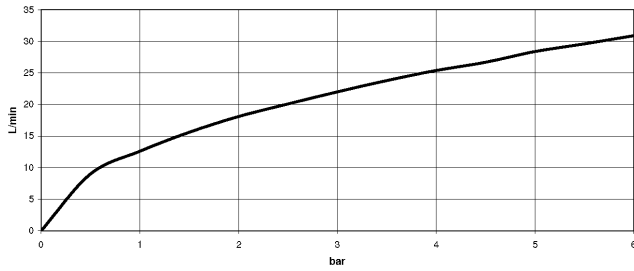
ST 050 406 5845

ST 050 406 5845

mm [inches]



Flow rate chart

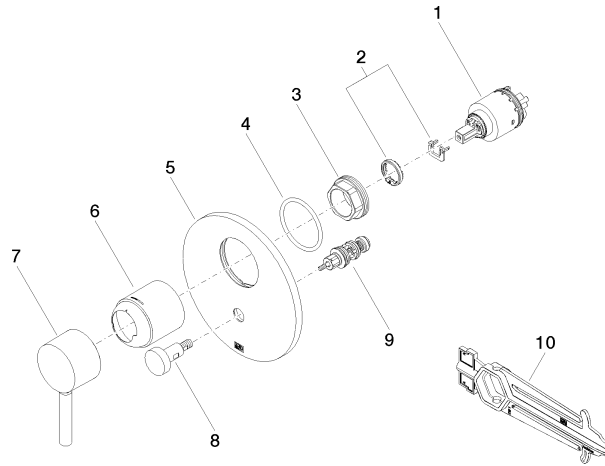


Certificates

DVGW_DW-
6512DN0126.

LGA_19863.

WRAS_2207012.



Spare parts list

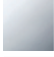

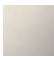












No.	Item Number	Name	Quantity used	Delivery time
1	90 15 05 038 00 90	cartridge	1	60
2	04 28 10 149 00 90	accessories	1	2
3	09 24 04 448 90	nut	1	2
4	09 14 10 084 90	seal	1	2
5	09 11 02 261-00	plate	1	10
6	09 11 02 260-00	sleeve	1	10
7	90 20 66 004 00-00	handle	1	10
8	90 31 09 139 00-00	pull-rod	1	10
9	90 21 34 081 00 90	diverter	1	2
10	90 30 09 064 00 90	key	1	2

ST 050 406 5845



Fits: TARA, LISSÉ, VAIA, META

- 155mm projection
- ball-joint pivotable through 18° (in any direction)
- Three or five settings: PURIFY RAIN, COMPACT SOFT FLOW, COMPACT AQUAPRESSURE FLOW, max. flow rate 7.6 l/min (at 3 bar)
- with anti-scale system
- spray head Ø 100mm
- rosette Ø 60 mm
- 1/2" connection
- This product can help a building meet the requirements of Green Building Rating Systems, e.g. LEED®, BREEAM®, DGNB

	Chrome	28 505 979-00 0050
	Brushed Platinum	28 505 979-06 0050
	Platinum	28 505 979-08 0050
	Dark Chrome	28 505 979-19 0050
	Light Gold	28 505 979-26 0050
	Light Gold	28 505 979-26
	Brushed Light Gold	28 505 979-27 0050
	Brushed Light Gold	28 505 979-27
	Brushed Durabronze (23kt Gold)	28 505 979-28 0050
	Matte Black	28 505 979-33 0050
	Brushed Bronze	28 505 979-42 0050
	Brushed Champagne (22kt Gold)	28 505 979-46 0050
	Champagne (22kt Gold)	28 505 979-47 0050
	Brushed Chrome	28 505 979-93 0050
	Brushed Dark Platinum	28 505 979-99 0050

Recommended miscellaneous

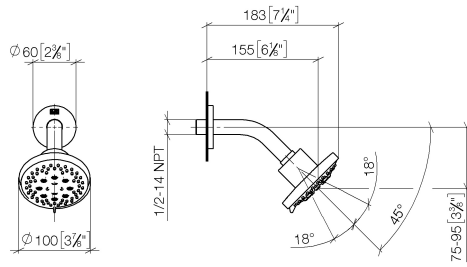


- Concealed wall elbow -**
- max. recess depth 163 mm
 - min. recess depth 90 mm

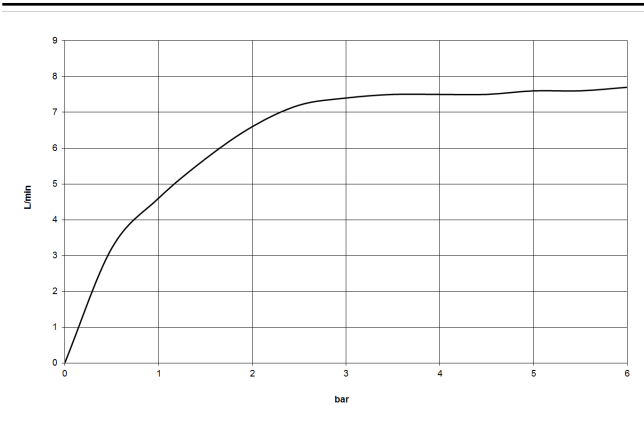
35 085 970 90

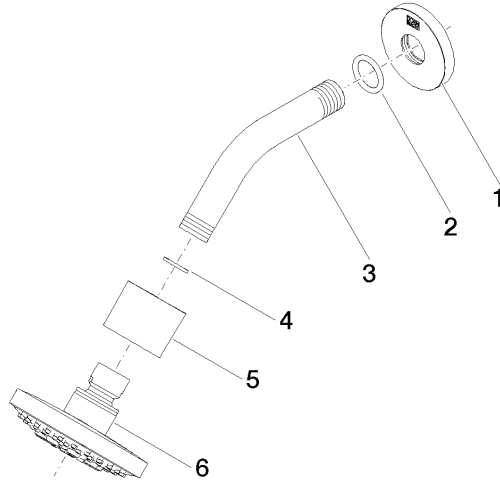
ST 050 406 5845

mm [inches]



Flow rate chart





Spare parts list

No.	Item Number	Name	Quantity used	Delivery time
1	09 27 22 045-00	rosette	1	10
2	90 14 10 026 00 90	seal	1	2
3	09 11 03 011-00	connection	1	10
4	90 14 20 002 00 90	seal	1	2
5	09 11 01 191-00	cover	1	10
6	90 12 05 055 00-00	shower	1	10

ST 050 406 5845



Fits: TARA, VAIA, META

- COMPACT RAIN, max. flow rate 6.8 l/min (at 3 bar)
- three settings: normal flow, soft flow, massage flow
- with anti-scale system
- 3/8" shower outlet
- metal shower hose 1250mm with integrated anti-twist protection
- rosette Ø 60 mm
- 1/2" connection
- This product can help a building meet the requirements of Green Building Rating Systems, e.g. LEED®, BREEAM®, DGNB

Intrinsic protection against back flow.

	Chrome	27 803 660-00 0050
	Brushed Platinum	27 803 660-06 0050
	Platinum	27 803 660-08 0050
	Dark Chrome	27 803 660-19 0050
	Light Gold	27 803 660-26 0050
	Brushed Light Gold	27 803 660-27 0050
	Brushed Durabross (23kt Gold)	27 803 660-28 0050
	Matte Black	27 803 660-33 0050
	Brushed Bronze	27 803 660-42 0050
	Brushed Champagne (22kt Gold)	27 803 660-46 0050
	Champagne (22kt Gold)	27 803 660-47 0050
	Brushed Chrome	27 803 660-93 0050
	Brushed Dark Platinum	27 803 660-99 0050

Recommended miscellaneous



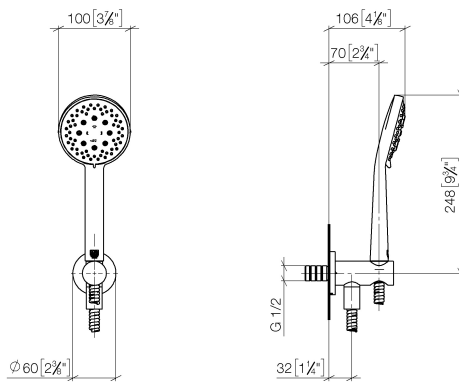
Concealed wall elbow -

35 085 970 90

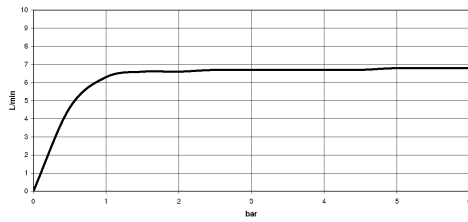
- max. recess depth 163 mm
- min. recess depth 90 mm

ST 050 406 5845

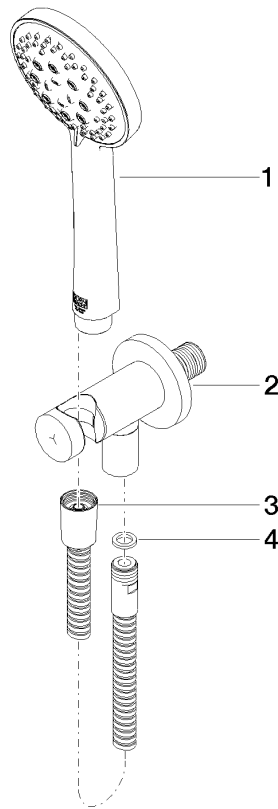
mm [inches]



Flow rate chart



ST 050 406 5845



Spare parts list

No.	Item Number	Name	Quantity used	Delivery time
1	28 014 979-00 0050	Hand shower 6.8 l/min - Chrome	1	-
	Spare part can no longer be ordered, please order the replacement item			
	28018979-000050	Hand shower - Chrome		
2	28 490 660-00	Wall elbow with integrated shower holder - Chrome	1	10
3	90 30 02 072 00-00	Metal shower hose 1/2" x 3/8" x 1250 mm - Chrome	1	10
4	90 14 20 026 00 90	seal	1	2