

ST 050 608 3979



Fits: IMO, MEM, CL.1, CYO

- LAMINAR FLOW, max. flow rate 15 l/min (at 3 bar)
- with volume control
- individual rosette 60 x 60 mm
- holder for Kneipp hose
- 1/2" wall elbow
- hose nozzle with sleeve M33
- with holding ring

| | | |
|--|-------------------------------------|--------------------|
|  | Chrome | ST 050 608 3979-00 |
|  | Brushed Platinum | ST 050 608 3979-06 |
|  | Platinum | ST 050 608 3979-08 |
|  | Dark Chrome | ST 050 608 3979-19 |
|  | Brushed Light Gold | ST 050 608 3979-27 |
|  | Brushed Durabronze (23kt Gold) | ST 050 608 3979-28 |
|  | Matte Black | ST 050 608 3979-33 |
|  | Brushed Champagne (22kt Gold) | ST 050 608 3979-46 |
|  | Champagne (22kt Gold) | ST 050 608 3979-47 |
|  | Brushed Chrome | ST 050 608 3979-93 |
|  | Brushed Dark Platinum | ST 050 608 3979-99 |

Individual components of this set

You need the following components for this set



1x 27 821 979-00



1x 28 285 979-00



WATER TUBE Kneipp wall elbow - Chrome

IMO

ST 050 608 3979

ST 050 608 3979



Fits: IMO, MEM, CL.1, CYO

- LAMINAR FLOW, max. flow rate 15 l/min (at 3 bar)
- with volume control
- rosette 60 x 60 mm
- holder for Kneipp hose
- 1/2" wall elbow
- without hose

Intrinsic protection against back flow.

Product change as of 1.4.2023: max. flow 15 l/min

| | | |
|--|-------------------------------------|---------------|
|  | Chrome | 27 821 979-00 |
|  | Brushed Platinum | 27 821 979-06 |
|  | Platinum | 27 821 979-08 |
|  | Dark Chrome | 27 821 979-19 |
|  | Brushed Light Gold | 27 821 979-27 |
|  | Brushed Durabronze (23kt Gold) | 27 821 979-28 |
|  | Matte Black | 27 821 979-33 |
|  | Brushed Champagne (22kt Gold) | 27 821 979-46 |
|  | Champagne (22kt Gold) | 27 821 979-47 |
|  | Brushed Chrome | 27 821 979-93 |
|  | Brushed Dark Platinum | 27 821 979-99 |

Recommended miscellaneous



- Concealed wall elbow -** 35 085 970 90
- max. recess depth 163 mm
 - min. recess depth 90 mm

Required miscellaneous



- WATER TUBE Kneipp hose white** 28 285 979-00
- 2000 mm - Chrome**
- with holding ring
 - hose nozzle with sleeve M33

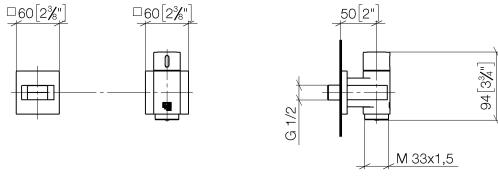
Required miscellaneous



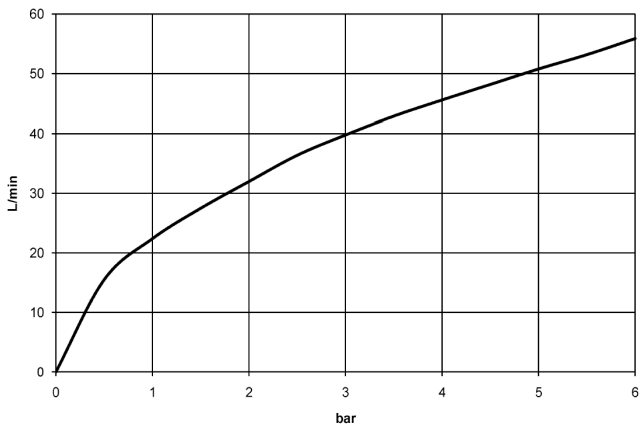
- WATER TUBE Kneipp hose black** 28 286 979-00
- 2000 mm - Chrome**
- with holding ring
 - hose nozzle with sleeve M33

ST 050 608 3979

mm [inches]



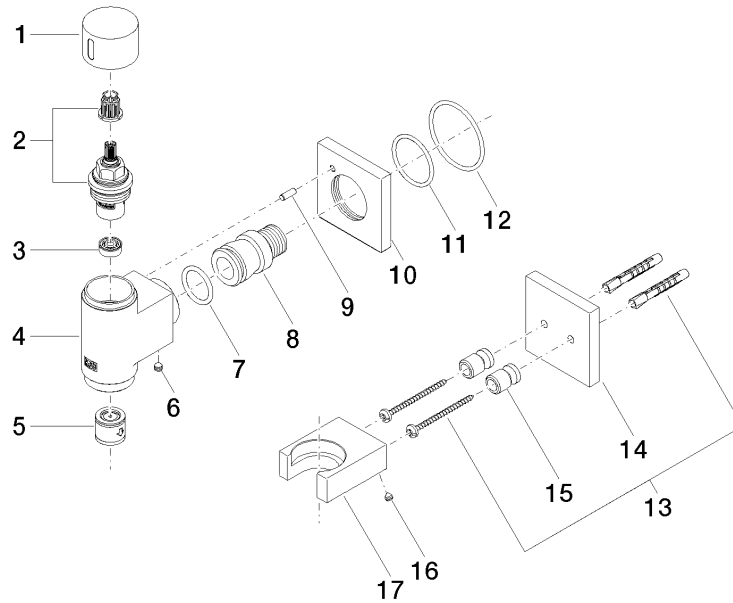
Flow rate chart



Certificates

Belgaqua_22_280_2
7_7.

ST 050 608 3979




Spare parts list

| No. | Item Number | Name | Quantity used | Delivery time |
|-----|--------------------|---------------------|---------------|---------------|
| 1 | 09 20 97 021-00 | handle | 1 | 10 |
| 2 | 90 90 03 145 00 90 | top | 1 | 2 |
| 3 | 90 23 01 146 00 90 | flow reducer | 1 | 2 |
| 4 | 09 11 03 135-00 | connection | 1 | 60 |
| 5 | 90 23 01 045 00 90 | back-flow preventer | 1 | 2 |
| 6 | 90 31 11 112 00 90 | pin | 1 | 2 |
| 7 | 09 14 10 081 90 | seal | 1 | 2 |
| 8 | 09 24 03 151 90 | nipple | 1 | 2 |
| 9 | 09 31 11 040 90 | pin | 1 | 2 |
| 10 | 09 27 97 021-00 | rosette | 1 | 10 |
| 11 | 09 14 10 119 90 | seal | 1 | 2 |
| 12 | 90 14 10 049 00 90 | seal | 1 | 2 |
| 13 | 05 30 31 025 00 90 | fixing set | 1 | 2 |
| 14 | 09 27 97 022-00 | rosette | 1 | 10 |
| 15 | 08 17 20 726 90 | holder | 2 | 2 |
| 16 | 09 31 11 148 90 | pin | 2 | 2 |
| 17 | 09 17 20 023-00 | holder | 1 | 10 |

ST 050 608 3979



- hose nozzle with sleeve M33
- with holding ring

| | | |
|--|-------------------------------------|---------------|
|  | Chrome | 28 285 979-00 |
|  | Brushed Platinum | 28 285 979-06 |
|  | Platinum | 28 285 979-08 |
|  | Dark Chrome | 28 285 979-19 |
|  | Brushed Durabronze (23kt Gold) | 28 285 979-28 |
|  | Matte Black | 28 285 979-33 |
|  | Brushed Champagne (22kt Gold) | 28 285 979-46 |
|  | Champagne (22kt Gold) | 28 285 979-47 |
|  | Brushed Chrome | 28 285 979-93 |
|  | Brushed Dark Platinum | 28 285 979-99 |



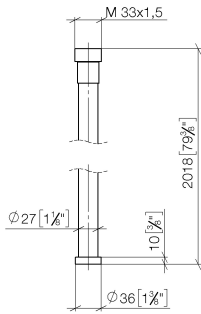
WATER TUBE Kneipp wall elbow - Chrome

IMO

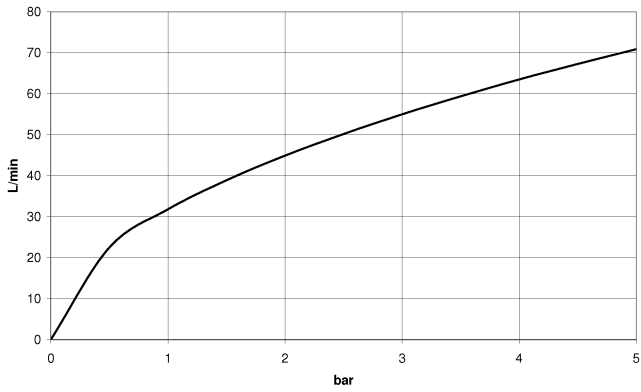
ST 050 608 3979

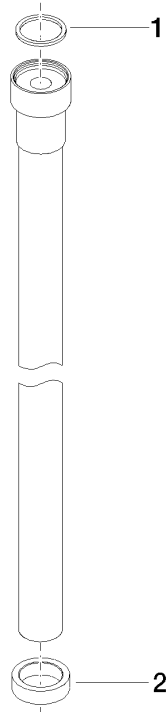
ST 050 608 3979

mm [inches]



Flow rate chart





Spare parts list

| No. | Item Number | Name | Quantity used | Delivery time |
|-----|-----------------|------|---------------|---------------|
| 1 | 09 14 20 003 90 | seal | 1 | 2 |
| 2 | 09 28 10 116-12 | ring | 1 | 30 |