

ST 060 111 2980



- cover plate 120 x 120 mm
- rosette 60 x 60 mm
- temperature control handle with safety limit stop at 38°C
- thermostat cartridge
- 2x head part with cut-to-length spindle and sleeve

	Brushed Platinum	ST 060 111 2980-06
	Chrome	ST 060 111 2980-00
	Platinum	ST 060 111 2980-08
	Dark Chrome	ST 060 111 2980-19
	Brushed Light Gold	ST 060 111 2980-27
	Brushed Durabronze (23kt Gold)	ST 060 111 2980-28
	Matte Black	ST 060 111 2980-33
	Brushed Chrome	ST 060 111 2980-93
	Brushed Dark Platinum	ST 060 111 2980-99

Individual components of this set

You need the following components for this set



1x 36 503 780-06



2x 36 607 980-06



IMO xTOOL Thermostat module with 2 valves - Brushed Platinum

IMO

ST 060 111 2980

ST 060 111 2980



- cover plate 120 x 120 mm
- temperature control handle with safety limit stop at 38°C
- thermostat cartridge
- WRAS 2011026

Fits: IMO, MEM, CL.1, CYO

	Brushed Platinum	36 503 780-06
	Chrome	36 503 780-00
	Platinum	36 503 780-08
	Dark Chrome	36 503 780-19
	Brushed Light Gold	36 503 780-27
	Brushed Durabronz (23kt Gold)	36 503 780-28
	Matte Black	36 503 780-33
	Brushed Champagne (22kt Gold)	36 503 780-46
	Champagne (22kt Gold)	36 503 780-47
	Brushed Chrome	36 503 780-93
	Brushed Dark Platinum	36 503 780-99

Required miscellaneous



xTOOL Concealed thermostat module without volume control - 35 503 970 90
 ● max. recess depth 155 mm
 ● min. recess depth 115 mm

Recommended miscellaneous



xGRID Attachment set for integrating in the dry wall construction - 12 340 970 90

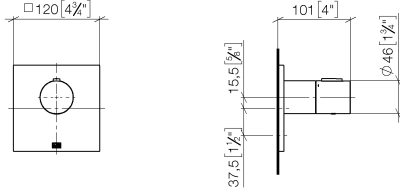
Required miscellaneous



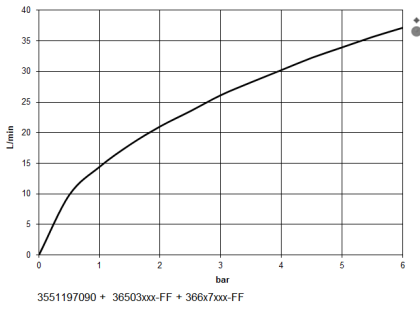
xGRID Installation track 555 mm - 12 360 970 90

ST 060 111 2980

mm [inches]



Flow rate chart



Certificates

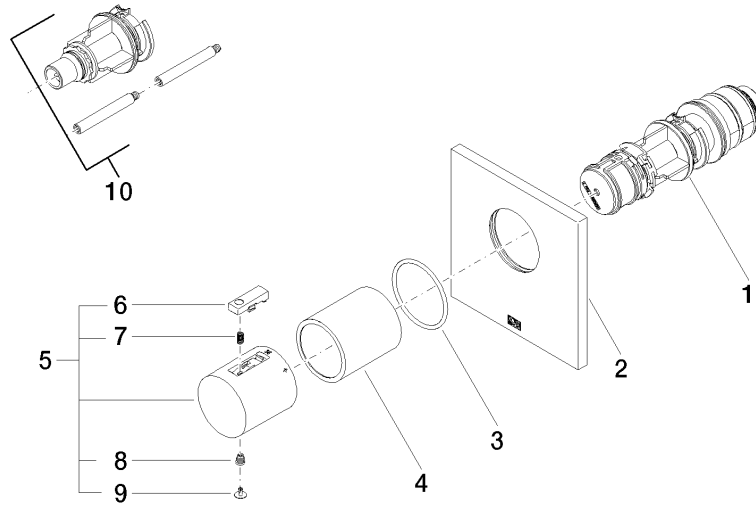
WRAS_2011026.

DVGW_DW-
6512DN0706.

LGA_29930.

LGA_29932.

ST 060 111 2980












Spare parts list

No.	Item Number	Name	Quantity used	Delivery time
1	90 15 02 063 00 90	cartridge	1	2
2	09 11 02 196-06	cover	1	60
3	90 14 10 049 00 90	seal	1	2
4	90 21 02 112 00-06	sleeve	1	10
5	90 17 33 004 00-06	handle	1	10
6	90 21 33 011 00-13	handle	1	2
7	90 16 02 027 00 90	spring	1	2
8	90 30 30 136 00 90	screw	1	2
9	90 31 20 049 00-13	plug	1	30
10	12 178 970 90	Extension 46 mm -	1	2


ST 060 111 2980



- rosette 60 x 60 mm
- head part with cut-to-length spindle and sleeve
- WRAS 2011026, 2010066

	Brushed Platinum	36 607 980-06
	Chrome	36 607 980-00
	Platinum	36 607 980-08
	Dark Chrome	36 607 980-19
	Brushed Light Gold	36 607 980-27
	Brushed Durabronze (23kt Gold)	36 607 980-28
	Matte Black	36 607 980-33
	Brushed Chrome	36 607 980-93
	Brushed Dark Platinum	36 607 980-99

Required miscellaneous

	Wall valve 1/2" - <ul style="list-style-type: none"> • max. recess depth 145 mm • min. recess depth 75 mm 	35 607 970 90
---	---	---------------



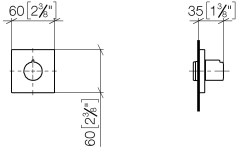
IMO xTOOL Thermostat module with 2 valves - Brushed Platinum

IMO

ST 060 111 2980

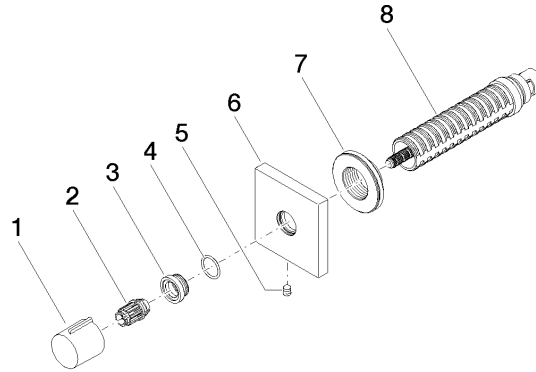
ST 060 111 2980

mm [inches]



Certificates

DVGW_DW-6501DN0116.	WRAS_2011026.	IAPMO_4976 (1).	LGA_29931.	WRAS_2010066.
DVGW_DW-6512DN0706.	LGA_29932.			



Spare parts list

No.	Item Number	Name	Quantity used	Delivery time
1	09 20 98 001-06	handle	1	10
2	09 12 12 005 90	fixing cap	1	2
3	09 12 12 043-06	base	1	10
4	09 14 10 017 90	seal	1	2
5	90 31 11 004 00 90	pin	1	2
6	09 27 98 014-06	rosette	1	10
7	09 21 02 151 90	sleeve	1	2
8	90 90 03 202 00 90	top	1	2