




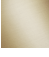


## CL.1 Bath spout without diverter for deck mounting - Brushed Platinum

CL.1

13 612 705



- 200mm projection
- rectangular spray pattern with 55 individual jets
- height of mixer 125 mm
- height up to aerator 108 mm
- hole diameter 35 mm
- 1/2" connection
- max. flow 24.6 l/min at 3 bar flow pressure
- WRAS 1512010

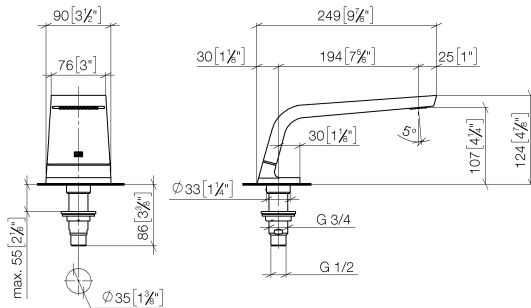
|  |                               |               |
|--|-------------------------------|---------------|
|  | Brushed Platinum              | 13 612 705-06 |
|  | Chrome                        | 13 612 705-00 |
|  | Dark Chrome                   | 13 612 705-19 |
|  | Brushed Champagne (22kt Gold) | 13 612 705-46 |
|  | Champagne (22kt Gold)         | 13 612 705-47 |
|  | Brushed Dark Platinum         | 13 612 705-99 |

## CL.1 Bath spout without diverter for deck mounting - Brushed Platinum

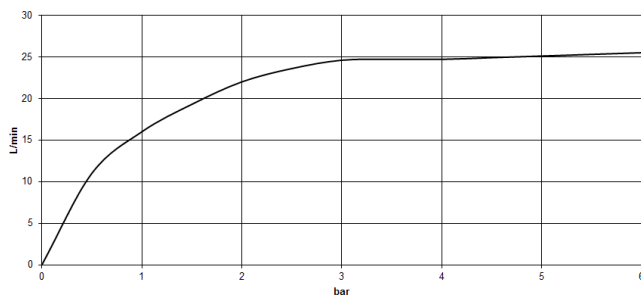
CL.1

13 612 705

mm [inches]



### Flow rate chart



### Codes & Standards

ASME A112.18.1

cUPC

DIN 4109

ISO 3822

Scottish Water  
Byelaws

UK Water Supply  
Regulations

Ü-Zeichen



## CL.1 Bath spout without diverter for deck mounting - Brushed Platinum

---

CL.1

13 612 705

### Certificates

---

LGA\_28

WRAS\_1512

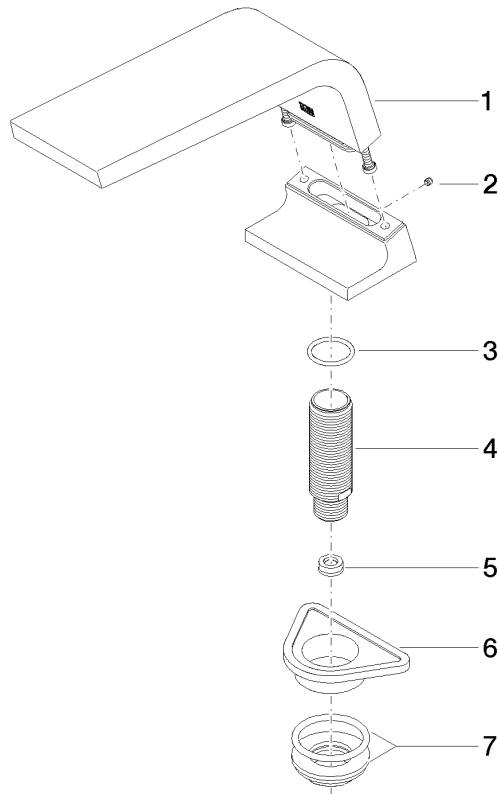
IAPMO\_4976

13 612 705

Product version from 3/9/2015 to 5/27/2021

**Product version from 5/27/2021**

Parts for other  
finishes can be found  
here: [Chrome](#)





## CL.1 Bath spout without diverter for deck mounting - Brushed Platinum

CL.1

13 612 705

### Spare parts list

Product version from 3/9/2015 to 5/27/2021

#### Product version from 5/27/2021

| No. | Item Number        | Name  | Quantity used | Delivery time |
|-----|--------------------|-------|---------------|---------------|
|     | 90 11 70 007 00-06 | spout | 7             | 10            |