








## CYO Deck-mounted basin spout without pop-up waste - Platinum / Brushed Platinum

CYO

13 715 811



- 133mm projection
- fixed spout
- rectangular, air-enriched flow
- height of mixer 180 mm
- height up to aerator 128 mm
- hole diameter 35 mm
- 2x 1/2" x 1/2" high pressure hose
- max. flow 4.5 l/min
- lead-free
- This product can help a building meet the requirements of Green Building Rating Systems, e.g. LEED®, BREEAM®, DGNB
- WRAS

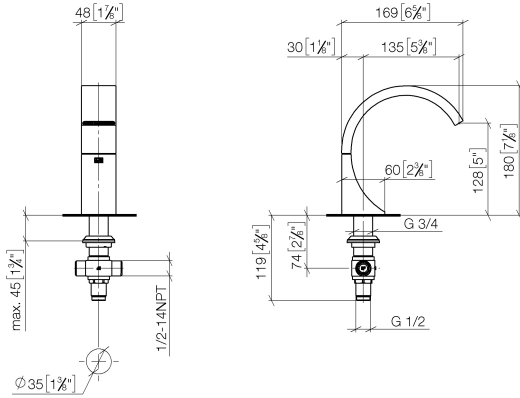
	Platinum / Brushed Platinum	13 715 811-36
	Chrome	13 715 811-00
	Brushed Platinum	13 715 811-06
	Dark Chrome	13 715 811-19
	Brushed Durabronze (23kt Gold)	13 715 811-28
	Durabronze / Brushed Durabronze (23kt Gold)	13 715 811-38
	Brushed Dark Platinum	13 715 811-99

# CYO Deck-mounted basin spout without pop-up waste - Platinum / Brushed Platinum

CYO

13 715 811

mm [inches]



## Flow rate chart



## Codes & Standards

DIN 4109

ISO 3822

NSF372

NSF61

Scottish Water  
Byelaws

UK Water Supply  
Regulations

Ü-Zeichen



CYO Deck-mounted basin spout without pop-up waste - Platinum / Brushed Platinum

CYO

13 715 811

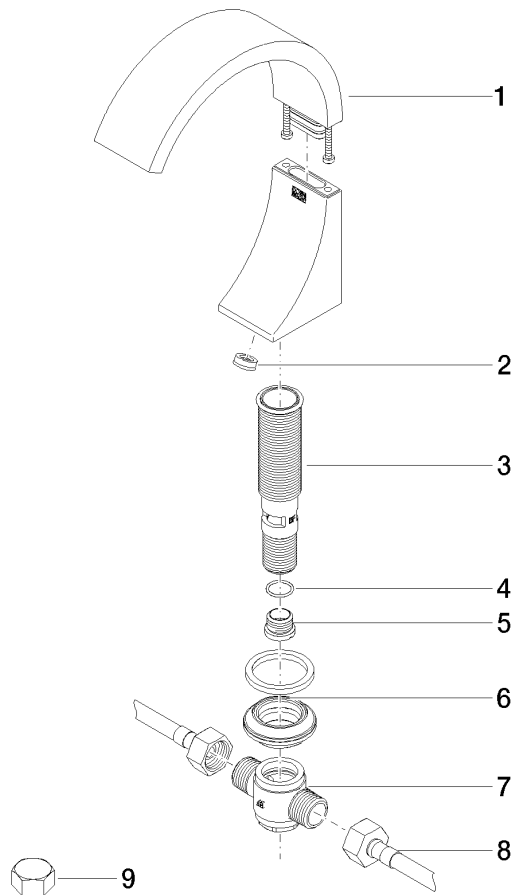
Certificates and sustainability

LGA_38	WRAS_2107	IAPMO_N-4	IAPMO_6
--------	-----------	-----------	---------

## CYO Deck-mounted basin spout without pop-up waste - Platinum / Brushed Platinum

CYO

13 715 811  
Parts for other  
finishes can be found  
here: [Chrome](#)



### Spare parts list

No.	Item Number	Name	Quantity used	Delivery time
9	04 21 02 006 00 92	cap	2.00	2
1	90 11 70 012 00-36	spout	1.00	20
5	09 24 04 021 10 90	nipple	1.00	2
8	04 30 04 096 00 90	hose	2.00	2
3	90 30 01 033 00 90	base	1.00	2
2	09 23 01 163 90	flow reducer	1.00	2
6	04 23 10 044 09 90	fixing set	1.00	2
4	09 14 10 017 90	seal	1.00	2
7	90 17 11 020 10 90	distributor	1.00	2