

META Bath spout for wall mounting - Brushed Dark Platinum

META

13 801 660



- 200mm projection
- circular normal flow
- rosette Ø 60 mm
- hole diameter 37 mm
- 1/2" connection
- max. flow 24.6 l/min at 3 bar flow pressure
- WRAS 2001010

| | | |
|--|-------------------------------|---------------|
|  | Brushed Dark Platinum | 13 801 660-99 |
|  | Chrome | 13 801 660-00 |
|  | Brushed Platinum | 13 801 660-06 |
|  | Dark Chrome | 13 801 660-19 |
|  | Light Gold | 13 801 660-26 |
|  | Brushed Light Gold | 13 801 660-27 |
|  | Matte Black | 13 801 660-33 |
|  | Brushed Bronze | 13 801 660-42 |
|  | Brushed Champagne (22kt Gold) | 13 801 660-46 |
|  | Champagne (22kt Gold) | 13 801 660-47 |
|  | Brushed Chrome | 13 801 660-93 |

Recommended miscellaneous



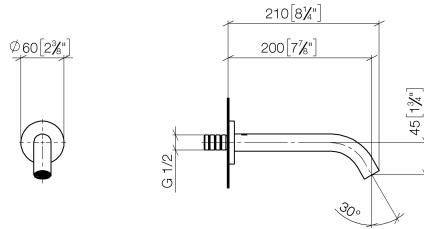
Concealed wall elbow -

35 085 970 90

- min. recess depth 90 mm
- max. recess depth 163 mm

13 801 660

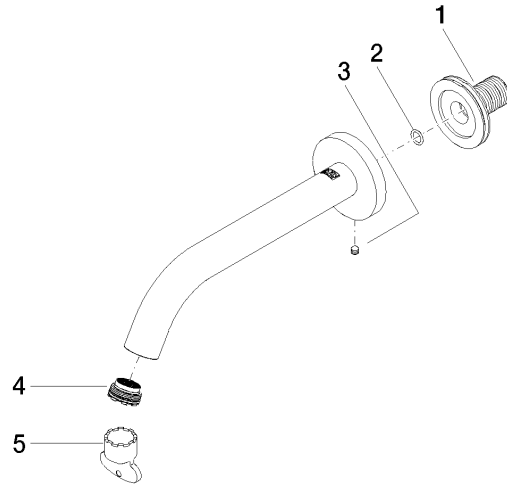
mm [inches]



Flow rate chart



Product version from 5/28/2021





META Bath spout for wall mounting - Brushed Dark Platinum

META

13 801 660

Spare parts list

Product version from 5/28/2021