

MEM Deck valve anti-clockwise closing hot - Chrome

MEM

20 005 783 Product version from 9/1/2022

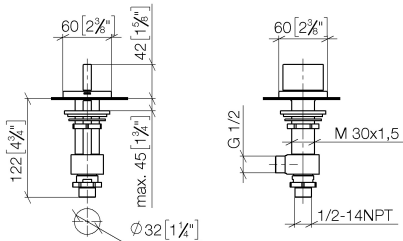


- With linear texture
- hole diameter 32 mm
- rosette 60 x 60 mm
- with hot marking
- WRAS

	Chrome	20 005 783-00
	Brushed Platinum	20 005 783-06
	Platinum	20 005 783-08
	Dark Chrome	20 005 783-19
	Brushed Durabronze (23kt Gold)	20 005 783-28
	Brushed Champagne (22kt Gold)	20 005 783-46
	Champagne (22kt Gold)	20 005 783-47
	Brushed Dark Platinum	20 005 783-99

20 005 783 Product version from 9/1/2022

mm [inches]



Flow rate chart



Codes & Standards

ASME A112.18.1	cUPC	DIN 4109	ISO 3822
Scottish Water Byelaws	UK Water Supply Regulations	Ü-Zeichen	



MEM Deck valve anti-clockwise closing hot - Chrome

MEM

20 005 783 Product version from 9/1/2022

Certificates and sustainability

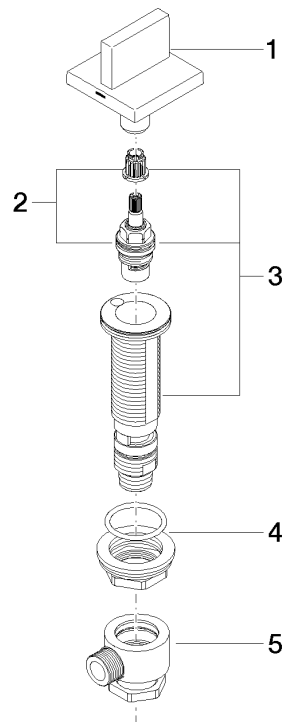
LGA_28	IAPMO_4976	WRAS_2103
--------	------------	-----------

MEM Deck valve anti-clockwise closing hot - Chrome

MEM

20 005 783 Product version from 9/1/2022

Parts for other
finishes can be found
here: Brushed
Platinum



Spare parts list

No.	Item Number	Name	Quantity used	Delivery time
4	04 23 10 032 78 90	fixing set	1.00	2
1	90 20 78 011 01-00	handle (hot)	1.00	10
3	04 17 11 058 32 90	side panel	1.00	2
2	90 90 03 132 00 90	top	1.00	2
5	04 17 11 023 10 90	distributor	1.00	2