

## TARA Three-hole mixer - Chrome

TARA

20 815 892



- 235mm projection
- pivotable spout 360°
- air-enriched flow
- height of mixer 370 mm
- height up to aerator 212 mm
- hole diameter spout 35 mm
- hole diameter valve 32 mm
- max. flow 7 l/min at 3 bar flow pressure
- lead-free
- This product can help a building meet the requirements of Green Building Rating Systems, e.g. LEED®, BREEAM®, DGNB

|   |                               |               |
|---|-------------------------------|---------------|
|    | Chrome                        | 20 815 892-00 |
|    | Brushed Platinum              | 20 815 892-06 |
|    | Platinum                      | 20 815 892-08 |
|    | Durabrand (23kt Gold)         | 20 815 892-09 |
|    | Dark Chrome                   | 20 815 892-19 |
|    | Brushed Durabrand (23kt Gold) | 20 815 892-28 |
|    | Matte Black                   | 20 815 892-33 |
|    | Brushed Champagne (22kt Gold) | 20 815 892-46 |
|    | Champagne (22kt Gold)         | 20 815 892-47 |
|   | Brushed Chrome                | 20 815 892-93 |
|  | Brushed Dark Platinum         | 20 815 892-99 |

### Recommended miscellaneous

**Strainer waste with control handle - Chrome** 10 710 970-00

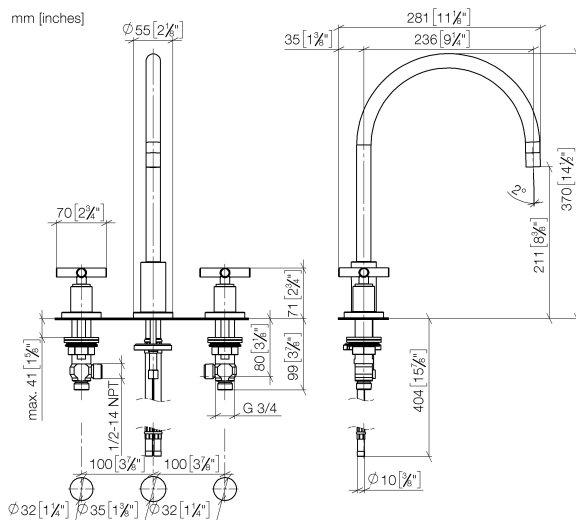


### Recommended miscellaneous

**Dispenser with rosette - Chrome** 82 444 970-00



20 815 892



### Flow rate chart



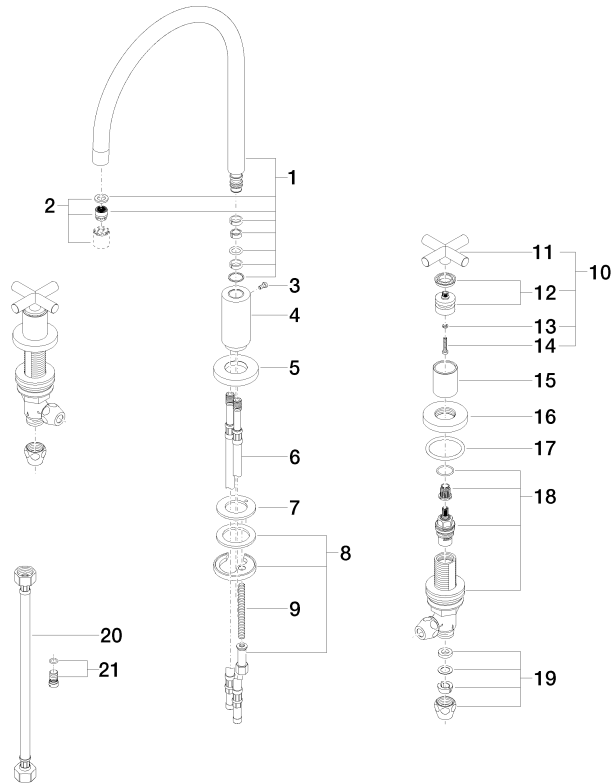
### Certificates

WRAS\_2107052.

ETA\_18514.

LGA\_19166.

GDV\_0400289.





## TARA Three-hole mixer - Chrome

TARA

20 815 892

### Spare parts list

| No.  | Item Number        | Name                                      | Quantity used | Delivery time |
|--|--------------------|---|---------------|---------------|
| 1  | 90 28 22 226 01-00 | spout                                     | 1             | 10            |
| 2  | 90 23 01 028 03-00 | aerator                                   | 1             | 10            |
| 3  | 09 30 30 057 90    | screw                                     | 1             | 2             |
| 4  | 09 11 10 088 10-00 | connection                                | 1             | 10            |
| 5  | 09 28 10 140-00    | ring                                      | 1             | 10            |
| 6  | 04 30 04 064 00 90 | hose                                      | 2             | 60            |
| 7  | 09 14 05 047 90    | seal                                      | 1             | 2             |
| 8  | 04 30 11 038 00 90 | fixing set                                | 1             | 2             |
| 9  | 09 31 11 011 90    | pin                                       | 1             | 2             |
| 10   | 90 20 89 010 10-00 | handle                                    | 2             | 10            |
| 11   | 09 20 89 010-00    | handle                                    | 2             | 60            |
| 12   | 90 12 12 007 00-00 | base                                      | 2             | 10            |
| 13   | 90 30 11 029 00 90 | disc                                      | 2             | 2             |
| 14   | 90 30 30 075 00 90 | screw                                     | 2             | 2             |
| 15   | 09 21 02 140-00    | sleeve                                    | 2             | 10            |
| 16   | 09 27 89 105-00    | rosette                                   | 2             | 10            |
| 17   | 90 14 10 043 00 90 | seal                                      | 2             | 2             |
| 18   | 90 17 11 040 51 90 | side panel                                | 2             | 2             |
| 19   | 90 23 30 040 00-00 | threaded connector                        | 4             | 10            |
| 20   | 12 501 970 90      | High pressure hose 1/2" x 1/2" x 300 mm - | 2             | -             |
| Spare part can no longer be ordered, please order the replacement item |                    |   |               |               |
| 21   | 04 31 20 046 10 92 | set                                       | 1             | 2             |