

## TARA Single-hole bidet mixer with pop-up waste - Brushed Dark Platinum

TARA

24 510 892

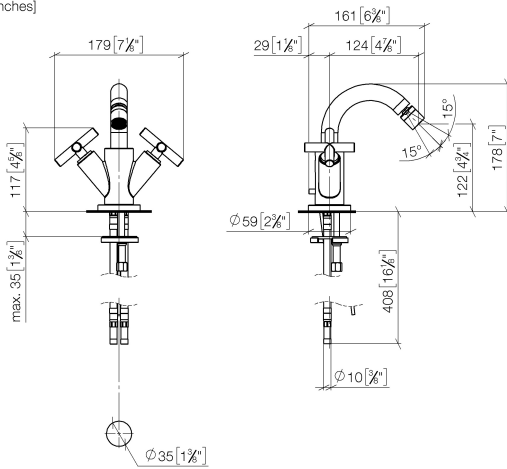


- 124mm projection
- ball-joint pivotable through 15° (in any direction)
- circular, air-enriched flow
- height of mixer 180 mm
- height up to aerator 123 mm
- hole diameter 35 mm
- rosette Ø 59 mm
- 2x screw-in M 10 x 1 pressure hose, leak-tested
- max. flow 7 l/min

|  |                                |               |
|--|--------------------------------|---------------|
|    | Brushed Dark Platinum          | 24 510 892-99 |
|    | Chrome                         | 24 510 892-00 |
|    | Brushed Platinum               | 24 510 892-06 |
|    | Platinum                       | 24 510 892-08 |
|    | Dark Chrome                    | 24 510 892-19 |
|    | Brushed Durabronze (23kt Gold) | 24 510 892-28 |
|    | Matte Black                    | 24 510 892-33 |
|    | Brushed Bronze                 | 24 510 892-42 |
|   | Brushed Champagne (22kt Gold)  | 24 510 892-46 |
|  | Champagne (22kt Gold)          | 24 510 892-47 |
|  | Brushed Chrome                 | 24 510 892-93 |

24 510 892

mm [inches]



### Flow rate chart



### Codes & Standards

DIN 4109

ISO 3822

Ü-Zeichen



## TARA Single-hole bidet mixer with pop-up waste - Brushed Dark Platinum

---

TARA

24 510 892

### Certificates

---

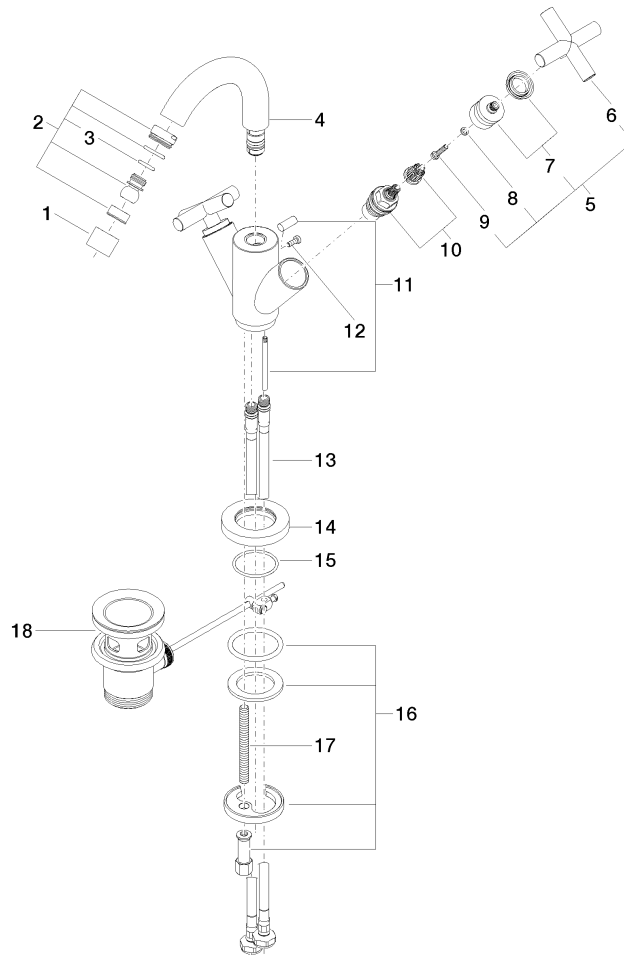
LGA\_18

24 510 892

Product version from 6/30/2009 to 5/27/2021

**Product version from 5/27/2021**

Parts for other  
finishes can be found  
here: [Chrome](#)





## TARA Single-hole bidet mixer with pop-up waste - Brushed Dark Platinum

TARA

24 510 892

### Spare parts list

Product version from 6/30/2009 to 5/27/2021

#### Product version from 5/27/2021

| No. | Item Number        | Name    | Quantity used | Delivery time |
|-----|--------------------|---------|---------------|---------------|
|     | 90 23 01 004 05-99 | aerator | 25            | 30            |