






CYO Single-lever bath mixer with stand pipe for free-standing assembly with hand shower set - Brushed Durabrand (23kt Gold)

CYO

25 863 811



- 253mm projection
- rectangular, air-enriched flow
- max. spout flow rate 26.5 l/min
- Hand shower: COMPACT RAIN, max. flow rate 6.8 l/min (at 3 bar)
- bar-type hand shower with anti-scale system
- wall bracket
- automatic bath/shower diverter
- total height 980 - 1050 mm
- stand pipe height 598 - 668 mm
- height up to aerator 903 – 973 mm
- push-on rosette 131 x 131 mm
- metal shower hose 1250mm with integrated anti-twist protection
- WRAS 2201043

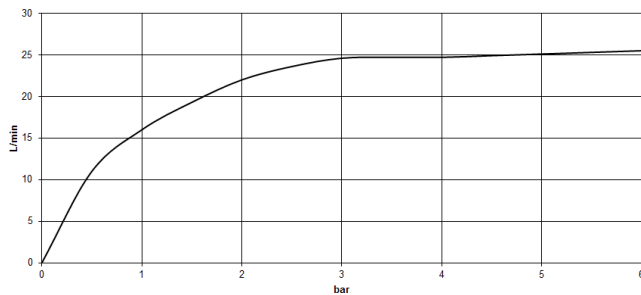
	Brushed Durabrand (23kt Gold)	25 863 811-28
	Chrome	25 863 811-00
	Brushed Platinum	25 863 811-06
	Dark Chrome	25 863 811-19
	Brushed Dark Platinum	25 863 811-99

CYO Single-lever bath mixer with stand pipe for free-standing assembly with hand shower set - Brushed Durabron (23kt Gold)

CYO



Flow rate chart



Codes & Standards

DIN 4109

EN 1717

ISO 3822

Scottish Water
Byelaws

UK Water Supply
Regulations

Ü-Zeichen



CYO Single-lever bath mixer with stand pipe for free-standing assembly with hand shower set - Brushed Durabrass (23kt Gold)

CYO

25 863 811

Certificates

WRAS_2201

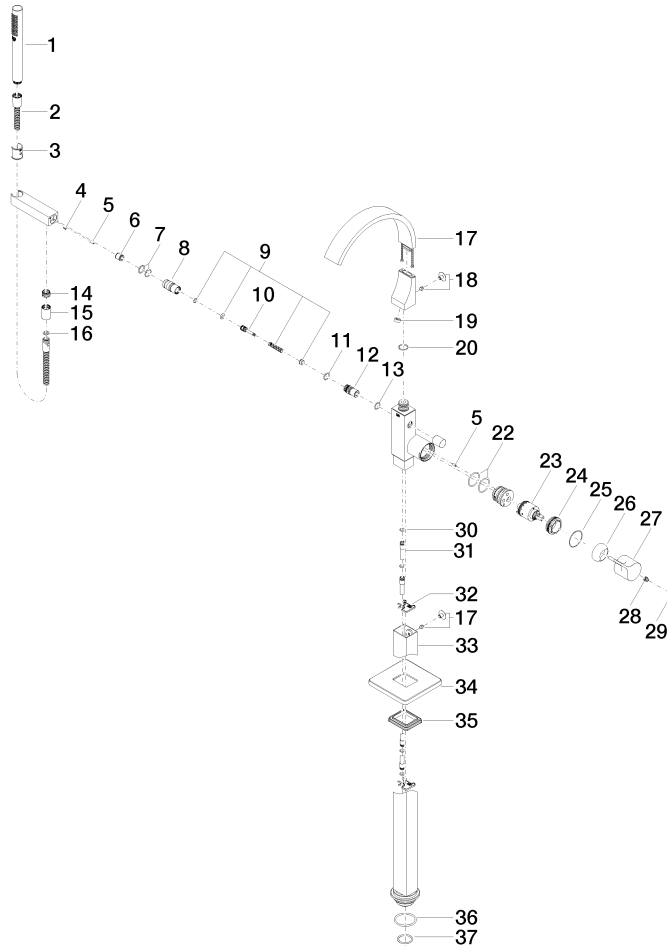
Belgaqua_21-376-2 LGA_38

CYO Single-lever bath mixer with stand pipe for free-standing assembly with hand shower set - Brushed Durabronz (23kt Gold)

CYO

25 863 811

Parts for other
finishes can be found
here: [Chrome](#)





CYO Single-lever bath mixer with stand pipe for free-standing assembly with
hand shower set - Brushed Durabrass (23kt Gold)

CYO

25 863 811

Spare parts list

No.	Item Number	Name	Quantity used	Delivery time
	90 12 11 140 30-28	shower	46	20