






## CYO Five-hole bath mixer for bath rim or tile edge installation - Chrome

27 523 811 Product version from 7/1/2023



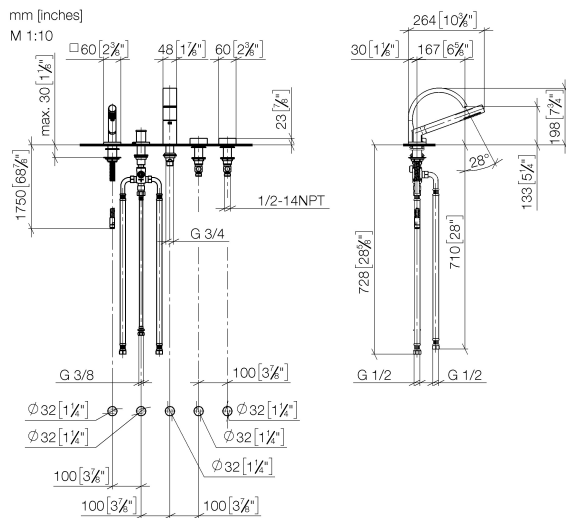
- 167mm projection
- rectangular, air-enriched flow
- height of mixer 198 mm
- height up to aerator 133 mm
- Hand shower: COMPACT RAIN, max. flow rate 6.8 l/min (at 3 bar)
- complete hand shower set with anti-scale system
- hole diameter spout 32 mm
- hole diameter valve 32 mm
- rosette for complete hand shower set 60 x 60mm
- handle Ø 60mm
- metal shower hose 1750mm with integrated anti-twist protection
- max. flow 23.8 l/min at 3 bar flow pressure
- WRAS

NOTE: The handle inserts must be ordered separately from the fittings!

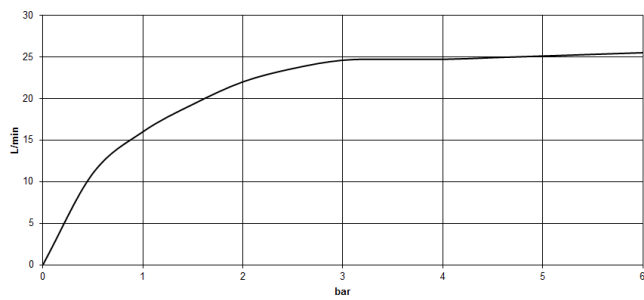
|   |                                   |               |
|---|-----------------------------------|---------------|
|  | Chrome                            | 27 523 811-00 |
|  | Brushed Platinum                  | 27 523 811-06 |
|  | Dark Chrome                       | 27 523 811-19 |
|  | Brushed Durabronze<br>(23kt Gold) | 27 523 811-28 |
|  | Brushed Dark<br>Platinum          | 27 523 811-99 |

## CYO Five-hole bath mixer for bath rim or tile edge installation - Chrome

27 523 811 Product version from 7/1/2023



### Flow rate chart



## Codes & Standards

|                |                        |                             |           |
|----------------|------------------------|-----------------------------|-----------|
| ASME A112.18.1 | cUPC                   | DIN 4109                    | EN 1717   |
| ISO 3822       | Scottish Water Byelaws | UK Water Supply Regulations | Ü-Zeichen |



CYO Five-hole bath mixer for bath rim or tile edge installation - Chrome

---

27 523 811 Product version from 7/1/2023

Certificates

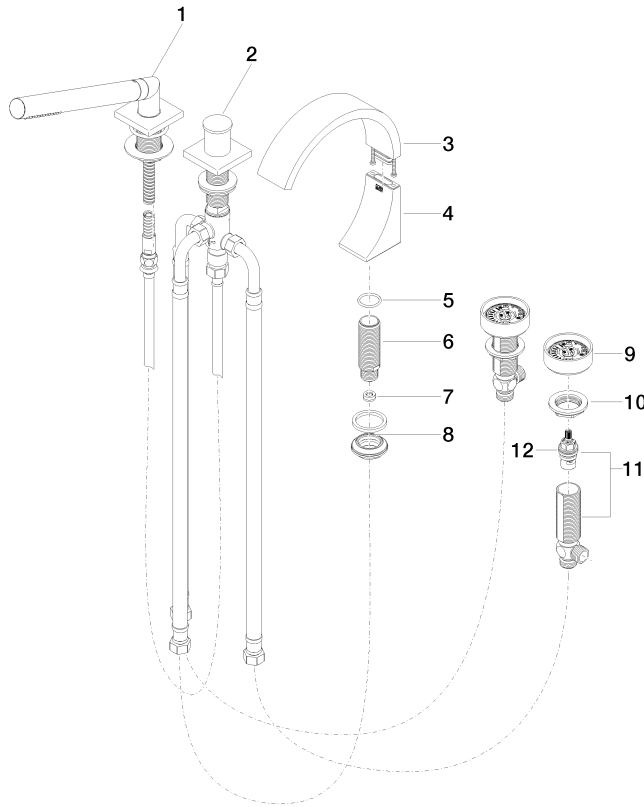
---

|            |           |        |                   |
|------------|-----------|--------|-------------------|
| IAPMO_4976 | WRAS_2204 | LGA_38 | Belgaqua_21-380-2 |
|------------|-----------|--------|-------------------|

**CYO Five-hole bath mixer for bath rim or tile edge installation - Chrome**

27 523 811 Product version from 7/1/2023

Parts for other  
finishes can be found  
here: Brushed  
Platinum



**Spare parts list**

| No. | Item Number        | Name   | Quantity used | Delivery time |
|-----|--------------------|--|---------------|---------------|
| 1   | 27 702 980-00      | Hand shower set for bath rim or tile edge installation - Chrome  | 1             | 10            |
| 2   | 29 140 670-00      | Two-way diverter for bath rim or tile edge installation - Chrome | 1             | 10            |
| 3   | 90 11 70 013 00-00 | spout  | 1             | 10            |
| 4   | 90 19 70 011 00-00 | connection   | 1             | 10            |
| 5   | 09 14 10 009 90    | seal   | 1             | 2             |
| 6   | 09 30 01 117 90    | connection   | 1             | 2             |
| 7   | 09 23 01 057 90    | flow reducer   | 1             | 2             |
| 8   | 04 23 10 044 09 90 | fixing set   | 1             | 2             |
| 9   | 90 18 40 291 01-00 | handle   | 2             | 10            |
| 10  | 04 30 11 038 68 90 | fixing set   | 1             | 2             |
| 11  | 04 17 11 055 41 90 | side panel   | 2             | 2             |
| 12  | 90 90 03 239 00 90 | top  | 2             | 2             |