

## CYO Bath shower set for bath rim or tile edge installation - Dark Chrome






CYO

27 632 811



- 167mm projection
- spout: rectangular normal flow
- max. flow 23.8 l/min at 3 bar flow pressure
- Hand shower: COMPACT RAIN, max. flow rate 6.8 l/min (at 3 bar)
- complete hand shower set with anti-scale system
- automatic bath/shower diverter
- height of mixer 198 mm
- height up to aerator 133 mm
- hole diameter spout 28 mm
- hole diameter for complete hand shower set 32 mm
- rosette for mixer 60 x 60mm
- rosette for complete hand shower set 60 x 60mm
- metal shower hose 1750mm with integrated anti-twist protection
- WRAS

Intrinsic protection against back flow.

|                                                                                   |                               |               |
|-----------------------------------------------------------------------------------|-------------------------------|---------------|
|  | Dark Chrome                   | 27 632 811-19 |
|  | Chrome                        | 27 632 811-00 |
|  | Brushed Platinum              | 27 632 811-06 |
|  | Brushed Durabrass (23kt Gold) | 27 632 811-28 |
|  | Brushed Dark Platinum         | 27 632 811-99 |

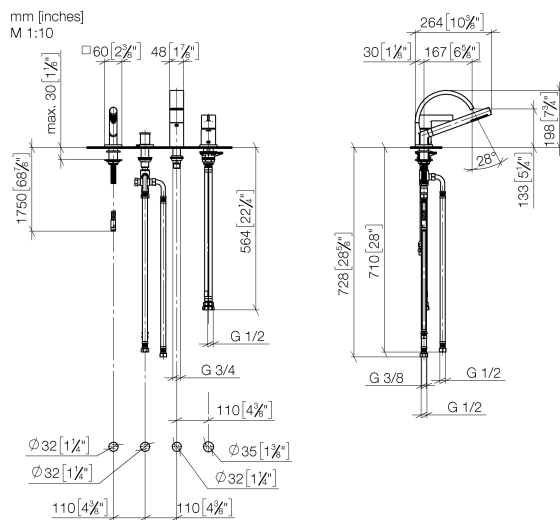
### Recommended miscellaneous



**Perfecto installation kit -**

**12 614 970 90**

27 632 811



Flow rate chart



## Codes & Standards

ASME A112.18.1

cUPC

Scottish Water  
Byelaws

UK Water Supply  
Regulations



## CYO Bath shower set for bath rim or tile edge installation - Dark Chrome

---

CYO

27 632 811

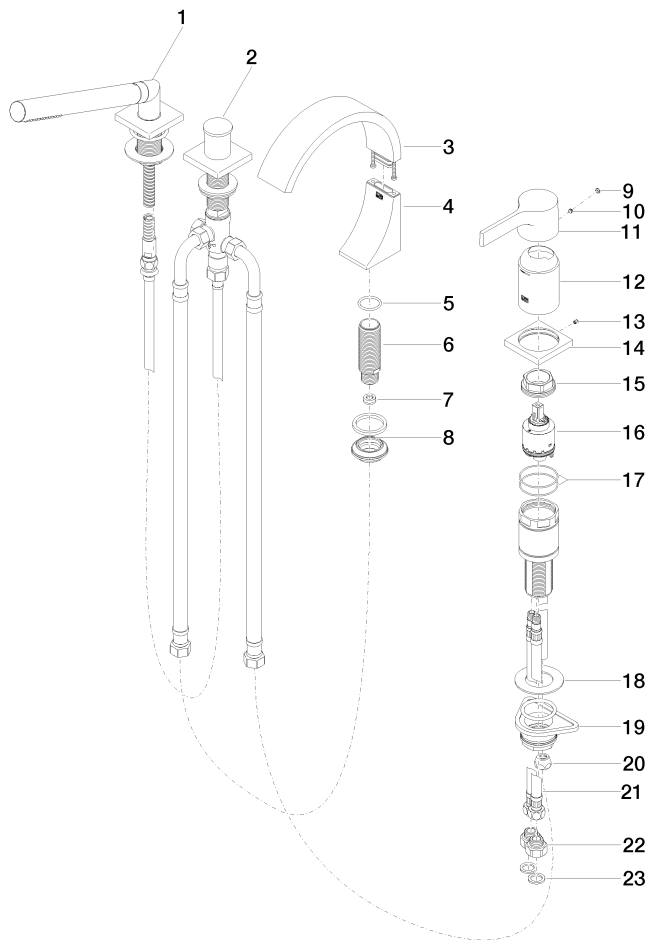
### Certificates and sustainability

---

IAPMO\_4976

WRAS\_2204

27 632 811





## CYO Bath shower set for bath rim or tile edge installation - Dark Chrome

CYO

27 632 811

### Spare parts list

| No. | Item Number        | Name                                                                  | Quantity used | Delivery time |
|-----|--------------------|-----------------------------------------------------------------------|---------------|---------------|
| 17  | 09 14 10 201 90    | seal                                                                  | 2.00          | 2             |
| 23  | 09 14 05 004 90    | seal                                                                  | 2.00          | 2             |
| 4   | 90 19 70 011 00-19 | connection                                                            | 1.00          | 20            |
| 16  | 90 15 05 039 00 90 | cartridge                                                             | 1.00          | 2             |
| 5   | 09 14 10 009 90    | seal                                                                  | 1.00          | 2             |
| 2   | 29 140 670-19      | Two-way diverter for bath rim or tile edge installation - Dark Chrome | 1.00          | 20            |
| 9   | 90 31 20 087 00-19 | plug                                                                  | 1.00          | 20            |
| 15  | 09 24 04 448 90    | nut                                                                   | 1.00          | 2             |
| 13  | 09 31 11 044 90    | pin                                                                   | 1.00          | 2             |
| 11  | 09 20 67 007-19    | handle                                                                | 1.00          | 60            |
| 6   | 09 30 01 117 90    | connection                                                            | 1.00          | 2             |
| 21  | 04 30 04 021 00 90 | hose                                                                  | 2.00          | 2             |
| 8   | 04 23 10 044 09 90 | fixing set                                                            | 1.00          | 2             |
| 14  | 09 27 67 016-19    | rosette                                                               | 1.00          | 60            |
| 12  | 09 28 30 037-19    | cover                                                                 | 1.00          | 20            |
| 19  | 04 23 10 044 02 90 | fixing set                                                            | 1.00          | 2             |
| 7   | 09 23 01 057 90    | flow reducer                                                          | 1.00          | 2             |
| 1   | 27 702 980-19      | Hand shower set for bath rim or tile edge installation - Dark Chrome  | 1.00          | 20            |
| 20  | 04 23 30 041 00 90 | threaded connector                                                    | 1.00          | 2             |
| 10  | 90 31 11 063 00 90 | pin                                                                   | 1.00          | 2             |
| 3   | 90 11 70 013 00-19 | spout                                                                 | 1.00          | 20            |
| 22  | 09 24 03 185-00    | nipple                                                                | 2.00          | 10            |
| 18  | 09 30 11 060 90    | disc                                                                  | 1.00          | 2             |